

ESSENCE

ADVANTAGE

BY MASTERBRAND

PRICING & SPECIFICATIONS

JUNE 2023

Supersedes all prior versions

SPEED. SERVICE. QUALITY.

ESSENCE

ADVANTAGE

BY MASTERBRAND

Your Essence Advantage user experience is our priority. The Essence Advantage Pricing and Specification Guide features hyperlink navigation, so you can quickly locate product specific to your project.

- The Indexes contain links to each unique product.
- The main Table of Contents contains links to the beginning of each section.
- The secondary Table of Contents at the beginning of each section contains links to product subcategories.
- Return to the beginning of each section by clicking on the title inside the black tab.
- Return to the main Table of Contents at any time by clicking on Essence Advantage logo at the bottom of each page.

If your preferred PDF search method is holding the Control and F keys and populating the search box with item codes or words, we've got you covered.

No matter how you choose to use this resource, we're glad you're specifying Essence Advantage!

TABLE OF CONTENTS

Index by Description	2
Index by Code	3
Customer Experience	4
How to Order Essence Advantage	5
Door Styles	6-8
Product Specifications	9-16
Wall Cabinets	17-40
Base Cabinets	41-52
Universal Design Cabinets	53-58
Tall Cabinets	59-67
Vanity Cabinets	68-73
Fillers	74-76
Skins	77-78
Panels	79-81
Mouldings	82-88
Accessories	89-94

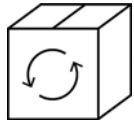
Description	Code	Page	Description	Code	Page
2 Drawer Base	2DB	44	Stain & Paint	QUARTCOLOR, SSC	94
3 Drawer Base	3DB	45	Starter Moulding, Shaker	STRS8	84
3" Filler	F3_-, TF396FH	75	Straight Valance / Baseboard	VV_--	88
6" Filler	F6_-, TF696FH	76	Super Lazy Susan	SLS36R	51
Accent Moulding, Flat Scribe	SM8	84	Tall End Panels	TEP2484LAM, TEP2496LAM, TEP3096LAM	79
Accent Moulding, Light Baffle	LB2	85	Tilt-out Trays	TOT_--	93
Accent Moulding, Small Scribe	SSM8	85	Toeboard	TB8LAM18, TB8LAM14	87
Angled Corner Sink Front	ACSF	49	Touch-up Kit	TUK	94
Angled Corner Sink Front Bottom	ACSFB	49	Universal Design, 3 Drawer Base	3DB_--32.5	55
Base and Tall Panels with Filler Attached	BEPF1.5LAM, BEPF3LAM, TEP2496F1.5, TEP3096F1.5	80	Universal Design, Base Corner Single Door	BC_--32.5S	57
Base Built-in Microwave with Drawer	BBMWD30	46	Universal Design, Base Double Door	B_--32.5	55
Base Corner Single Door	BC_--S	50	Universal Design, Base Built-in Microwave with Drawer	BBMWD3032.5	56
Base Double Door	B	43	Universal Design, Base Single Door	B_--32.5R	54
Base Double Door - Full Height	B_--FH	44	Universal Design, Base Sink Removable	BSR_--32.5	56
Base Easy Reach	BER_--R	51	Universal Design, Sink Base	SB_--32.5	0
Base End Decorative Door Panel Kit	BEDSD	81	Universal Design, Super Lazy Susan	SLS3632.5R	58
Base Lazy Susan	BLS36R	52	Universal Design, Vanity Base Sink Removable	VBSR_--32.521	58
Base Single Door	B_--R	42	Utility Double Door	U24_--24	62
Base Single Door - Full Height	B_--FHR	43	Utility Double Door	U30_--24	64
Base Wastebasket	BWB	46	Utility Single Door	U18_--24R	60
Classic Square Wood Hood	WHS36	90	Vanity Base Single Door	VB_--3421R	71
Classic Wood Hood Chimney	WHC36	90	Vanity Drawer Base	VDB_--32.521	69
Corner Moulding, Inside Corner	ICM8	86	Vanity Drawer Base	VDB_--3421	72
Corner Moulding, Outside Corner	OCM8	86	Vanity Sink Base	VSB_--32.521	70
Corner Moulding, Quarter Round	QRM	87	Vanity Sink Base	VSB_--3418	70
Country Sink Base	CNTYSB	48	Vanity Sink Base	VSB_--3421	72
Crown Moulding, Cove Crown	COVECROWN8	83	Vanity Sink Drawer Base	2VSD_--3421	73
Crown Moulding, Small Cove Crown	SMCOVECROWN8	83	Vanity Sink Drawer Base	3VSD_--3421	73
Crown Moulding, Solid Wood Crown	SWCRM8	82	Wall Corner Double Door	WC_--_--S	36
Crown Moulding, Solid Wood Large Crown	SWLCRM8	82	Wall Corner Single Door	WC_--_--S	35
Diagonal Wall	DW_--_--_--R	38	Wall Cut-for-glass	WCG	29
Diagonal Wall Cut-for-glass	DWCG	39	Wall Double Door	W	19
End Panel Skins	WEPS42LAM14, BEPS34.514, TEPS96LAM14	77	Wall End Decorative Door Panel Kit	WED	81
Easy Reach Wall Corner	ER_--	40	Wall Single Door	W_--_--R	20
Finished Back Skins	BP4834.514, BP4896LAM14	78	Wood Hood Blower, 400 CFM	BLOWER400	91
Microwave Wall Cabinet	MW3018	90			
Mini Touch-up Kit	MTUK	94			
Roll Tray Kits	RT_--WD	92			
Single Oven 3 Drawers	OC3D33_--24	66			
Sink Base	SB	47			

Code	Description	Page	Code	Description	Page
2DB	2 Drawer Base	44	SLS36R	Super Lazy Susan	51
2VSD__3421	Vanity Sink Drawer Base	73	SM8	Accent Moulding, Flat Scribe	84
3DB	3 Drawer Base	45	SMCOVECROWN8	Crown Moulding, Small Cove Crown	83
3DB__32.5	Universal Design, 3 Drawer Base	55	SSC	Stain & Paint	94
3VSD__3421	Vanity Sink Drawer Base	73	SSM8	Accent Moulding, Small Scribe	85
ACSF	Angled Corner Sink Front	49	STRS8	Starter Moulding, Shaker	84
ACSF8	Angled Corner Sink Front Bottom	49	SWCRM8	Crown Moulding, Solid Wood Crown	82
B	Base Double Door	43	SWLCRM8	Crown Moulding, Solid Wood Large Crown	82
B__32.5	Universal Design, Base Double Door	55	TB8LAM14	Toeboard	87
B__32.5R	Universal Design, Base Single Door	54	TB8LAM18	Toeboard	87
B__FH	Base Double Door - Full Height	44	TEP2484LAM	Tall End Panel	79
B__FHR	Base Single Door - Full Height	43	TEP2496F1.5	Tall Panel with Filler Attached	80
B__R	Base Single Door	42	TEP2496LAM	Tall End Panel	79
BC__32.5S	Universal Design, Base Corner Single Door	57	TEP3096F1.5	Tall Panel with Filler Attached	80
BC__S	Base Corner Single Door	50	TEP3096LAM	Tall End Panel	79
BBMWD30	Base Built-in Microwave with Drawer	46	TEPS96LAM14	End Panel Skins	77
BBMWD3032.5	Universal Design, Base Built-in Microwave with Drawer	56	TF396FH	3" Filler, Tall	75
BEDSD	Base End Decorative Door Panel Kit	81	TF696FH	6" Filler, Tall	76
BEPF1.5LAM	Base Panel with Filler Attached	80	TOT__	Tilt-out Trays	93
BEPF3LAM	Base Panel with Filler Attached	80	TUK	Touch-up Kit	94
BEPS34.514	End Panel Skins	77	U18__24R	Utility Single Door	60
BER__R	Base Easy Reach	51	U24__24	Utility Double Door	62
BLOWER400	Wood Hood Blower, 400 CFM	91	U30__24	Utility Double Door	64
BLS36R	Base Lazy Susan	52	VB__3421R	Vanity Base Single Door	71
BP4834.514	Finished Back Skins	78	VDB__32.521	Vanity Drawer Base	69
BP4896LAM14	Finished Back Skins	78	VDB__3421	Vanity Drawer Base	71
BSR__32.5	Universal Design, Base Sink Removable	56	VS8__32.521	Vanity Sink Base	70
BWB	Base Wastebasket	46	VS8__3418	Vanity Sink Base	70
CNTYSB	Country Sink Base	48	VS8__3421	Vanity Sink Base	72
COVECROWN8	Crown Moulding, Cove Crown	83	VBSR__32.521	Universal Design, Vanity Base Sink Removable	58
DW_____R	Diagonal Wall	38	VV__	Straight Valance / Baseboard	88
DWCG	Diagonal Wall Cut-for-glass	39	W	Wall Double Door	19
ER__	Easy Reach Wall Corner	40	W_____R	Wall Single Door	20
F3__	3" Filler	75	WC_____S	Wall Corner Double Door	36
F6__	6" Filler	76	WC_____S	Wall Corner Single Door	35
ICM8	Corner Moulding, Inside Corner	86	WCG	Wall Cut-for-glass	29
LB2	Accent Moulding, Light Baffle	85	WED	Wall End Decorative Door Panel Kit	81
MTUK	Mini Touch-up Kit	94	WEPS42LAM14	End Panel Skins	77
MW3018	Microwave Wall Cabinet	34	WHC36	Classic Wood Hood Chimney	90
OC3D33__24	Single Oven 3 Drawers	66	WHS36	Classic Square Wood Hood	90
OCM8	Corner Moulding, Outside Corner	86			
QRM	Corner Moulding, Quarter Round	87			
QUARTCOLOR	Stain & Paint	94			
RT__WD	Roll Tray Kits	92			
SB	Sink Base	47			
SLS3632.5R	Universal Design, Super Lazy Susan	58			

ESSENCE ADVANTAGE

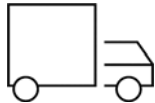
BY MASTERBRAND

CABINETS FAST



Cycle Ship

Orders are delivered based on a cycle ship calendar



Truckload

15 business day lead time delivered

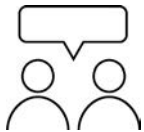
SERVICE MATTERS

As part of the Williams Distributing product family, we believe our service will set Essence Advantage apart. This is our pledge to every partner.



Consistent Support

We will be there to help before, during and after the sale.



Personal Support

We will actually listen and work together to support your unique needs.



Proven Commitment

We will use our extensive knowledge and years of experience to help every partner success.

QUALITY ABOVE

We strive to deliver beyond your expectations. That's why popular features like all-plywood construction and soft-close come standard with every Essence Advantage cabinet. Say goodbye to the hassle of upgrades and added costs for your customers.

ESSENCE ADVANTAGE order

WAYS TO ORDER

1. Email orders to williamsorders@wmsdist.com
2. Fax orders to 616-456-8091
3. Call in orders 800-748-0503

EXPANDED CUSTOMER SERVICE

Monday - Thursday	8:00 am - 8:00 pm EST
Friday	8:00 am - 5:00 pm EST
Saturday	9:00 am - 3:00 pm EST

- Orders with less than 8 cabinets may incur an additional \$150 freight charge. We do try to group our orders when possible to avoid this charge.
- Once we receive your order, we will contact you if there are any questions or concerns regarding your order.
- If there are no questions, your order will be entered and you will receive an Order Acknowledgment within 24 hours.
- Thoroughly review the Order Acknowledgment for accuracy including quantity, colors, etc.
- Please reference your Order Acknowledgment number when contacting us regarding your order.
- Orders are due by 10:30am every Thursday to make the next week's Thursday cycle ship trailer.

Before placing your order, please review for accuracy. No changes can be made after submission to Masterbrand.

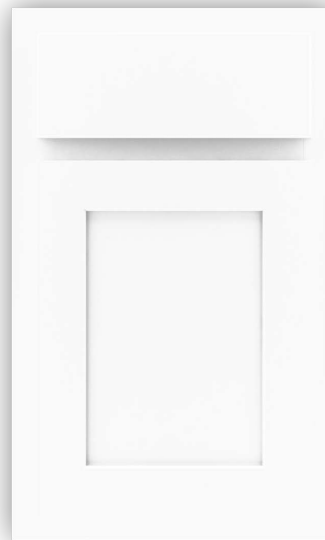


CLASSIC

Partial Overlay • Shaker • 2 1/4" Rail • Slab drawer front



Bark



Snow



OMNI

Full Overlay • Shaker • 2 1/4" Rail • 5-piece drawer front



Admiral



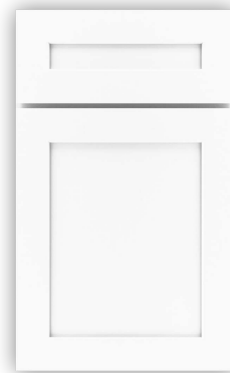
Beachwood



Graphite



Mineral

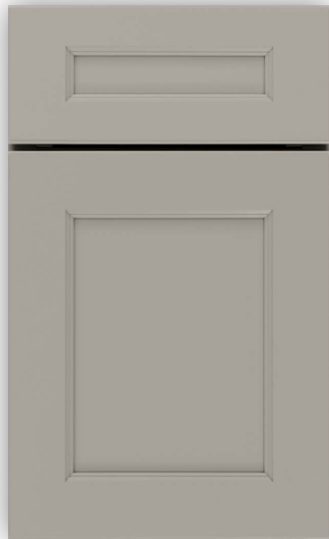


Snow

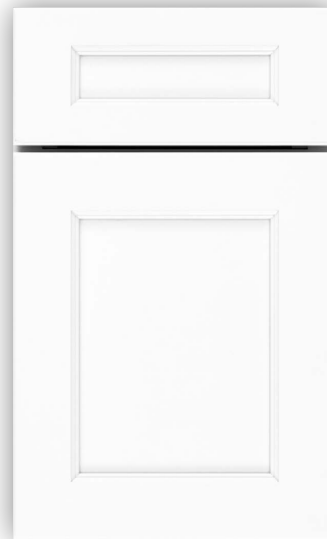


SPECTRA

Full Overlay • Transitional • 3" Rail • 5-piece drawer front

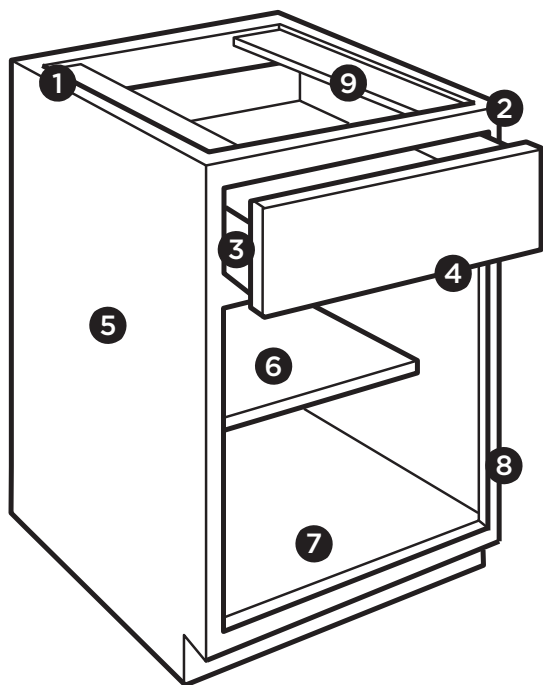


Mineral



Snow

PRODUCT SPECIFICATIONS












- 1 1/2" Plywood ends, 3/8" top, back, and bottom
- 2 3/4" Hardwood frame, doors and drawer fronts
- 3 5/8" Solid wood dovetail drawer box
- 4 Soft-closing, undermount, full extension drawer guides
- 5 Matching exterior
- 6 3/4" Natural Plywood adjustable shelves
- 7 Natural interior
- 8 Soft-closing, 6-way adjustable hinges
- 9 3/8" Plywood I-beam braces

Cabinet Care and Cleaning Instructions: wmsdist.com/essence-advantage/resources

For installation and warranty information, visit: wmsdist.com/essence-advantage/resources

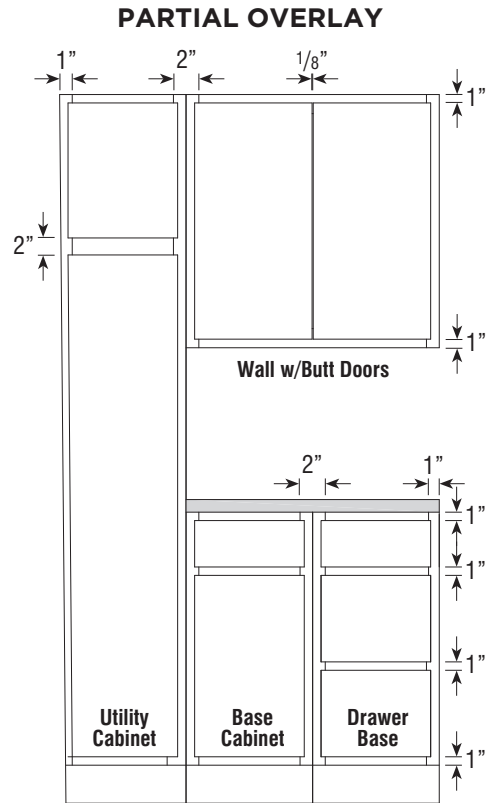
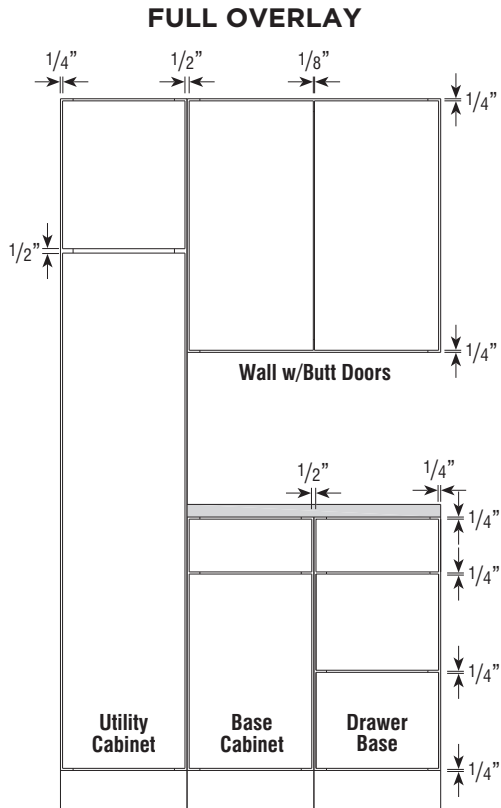
PRICE AND STYLE CODE INFORMATION

	Price Group 1		Price Group 2					Price Group 3	
	Classic Stain	Classic Paint	Omni Paint	Omni Paint	Omni Paint	Omni Stain	Omni Paint	Spectra Paint	Spectra Paint
	Bark	Snow	Snow	Mineral	Graphite	Beachwood	Admiral	Snow	Mineral
									
Style Code	320	321	323	327	328	329	330	325	326
Common Style Code -Items with stain/paint price (Ex. Moulding)	310	311	311	312	313	314	315	311	312
Miscellaneous Code -Items with one price (Ex. Roll Trays)	300	300	300	300	300	300	300	300	300

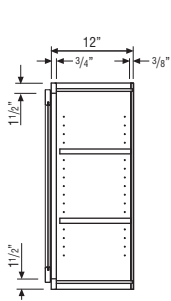
OMNI ADMIRAL PRODUCT OFFERING

Base	Wall	Accessories
B12R	W1830R	QUARTCOLOR
B15R	W2130R	SSC
B18R	W2430	TUK
B21R	W2730	MTUK
B24	W3030	
B27	W3630	
B30	W1836R	Fillers, Skins, Panels and Moulding
B33	W2136R	
B36	W2736	F330
B9FHR	W3036	F336
3DB15	W3636	BP4896LAM14
3DB18	W361824	BEPF3LAM
3DB21	DW302424R	TEP2496F1.5
3DB24		WED1230
3DB30	Tall	WED1236
3DB36	U188424R	BEDSD
BBMWD30	U189024R	SWCRM8
BWB18		SMCOVECROWN8
SB30	Vanity	STRS8
SB33	VSB243421	SM8
SB36	VSB303421	SSM8
CNTYSB36	VSB363421	LB2
BC42S		OCM8
BER36R		QRM
SLS36R		TB8LAM14
		VV96

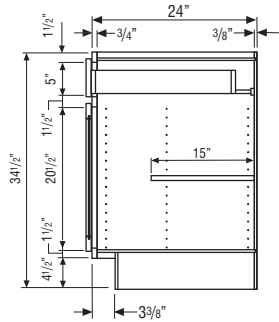
FULL AND PARTIAL OVERLAY SPECIFICATIONS



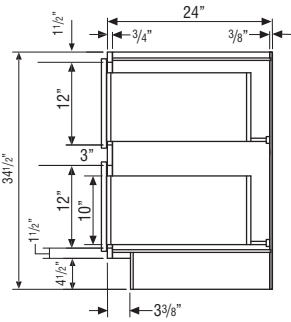
CABINET DIMENSIONS



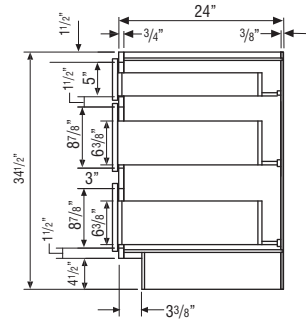
WALL CABINET



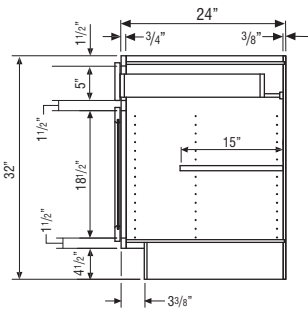
BASE CABINET



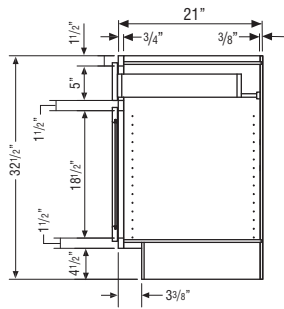
**TWO-DRAWER
BASE CABINET**



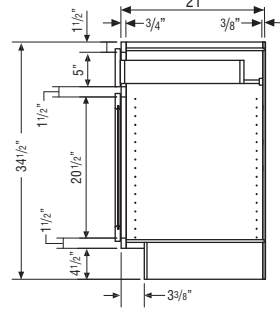
**THREE-DRAWER
BASE CABINET**



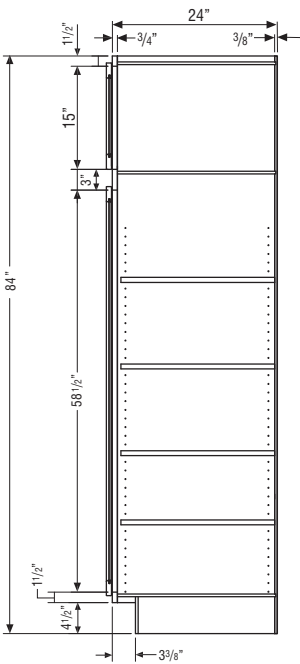
**32 1/2" HIGH
BASE CABINET**



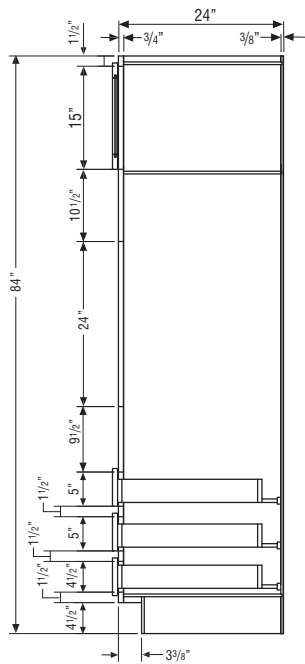
**32 1/2" HIGH
VANITY CABINET**



**34 1/2" HIGH
VANITY CABINET**



UTILITY CABINET

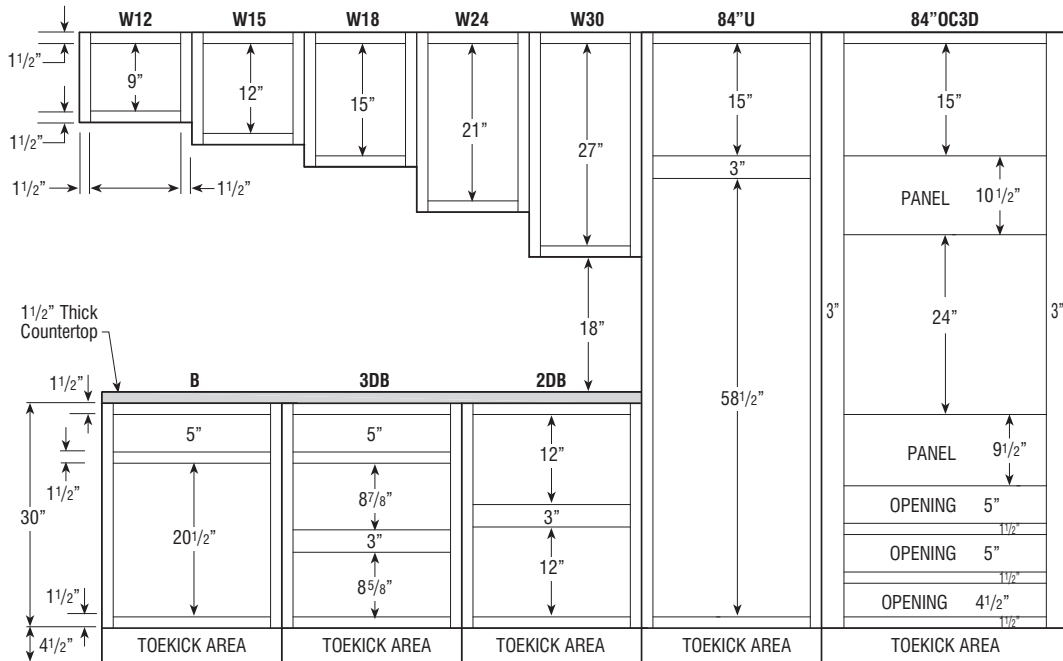


OC3D CABINET

CABINET DIMENSIONS

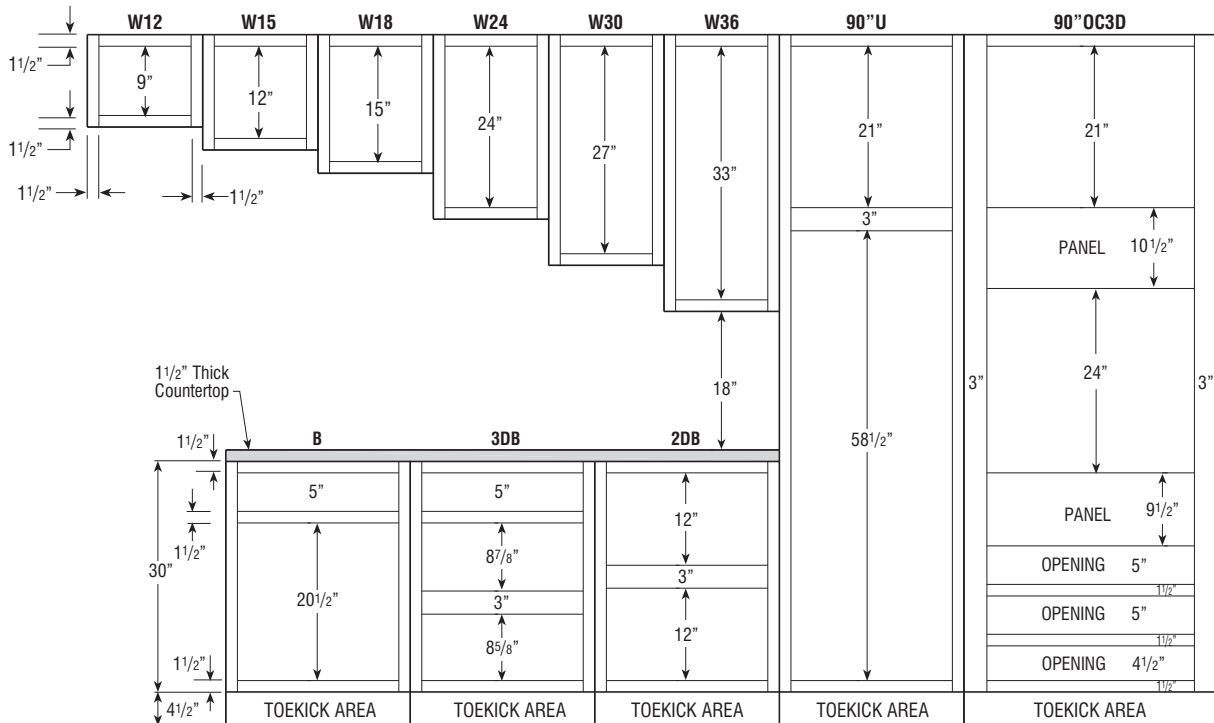
84" HIGH APPLICATION

Number after Wall Cabinet Represents Height of Cabinet



90" HIGH APPLICATION

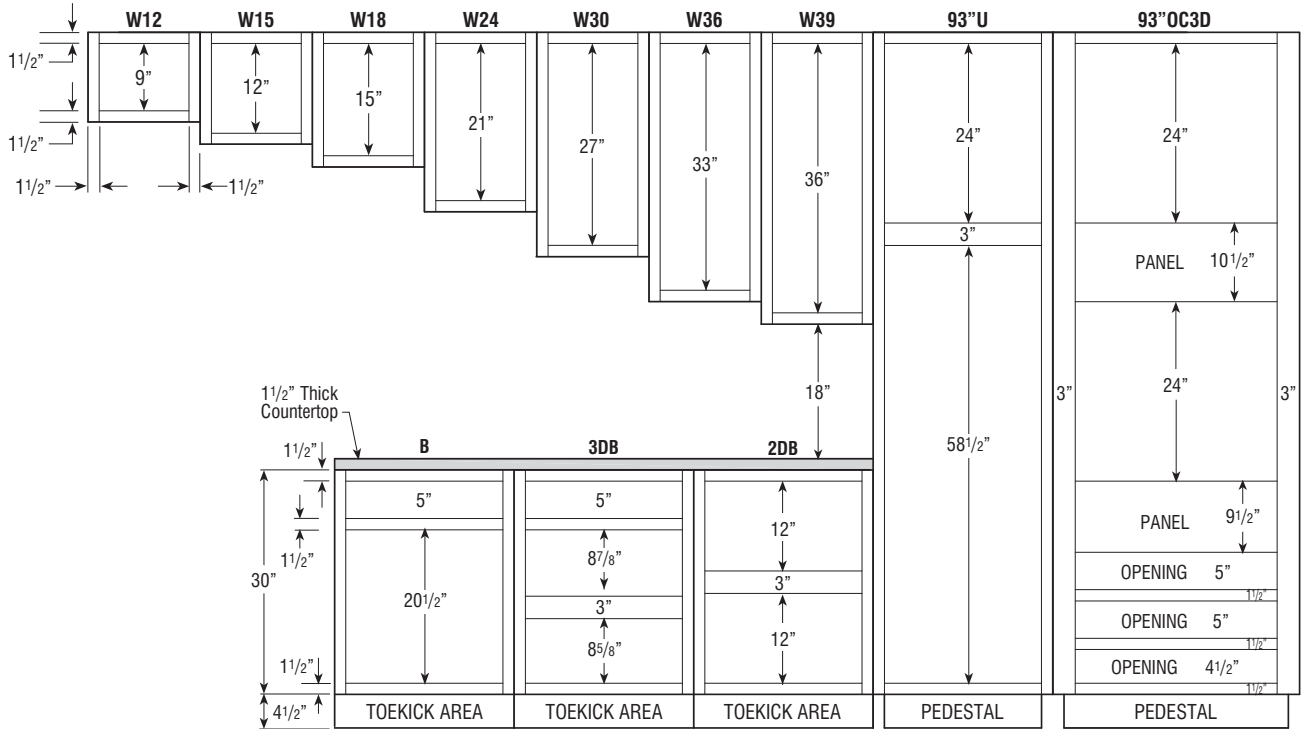
Number after Wall Cabinet Represents Height of Cabinet



CABINET DIMENSIONS

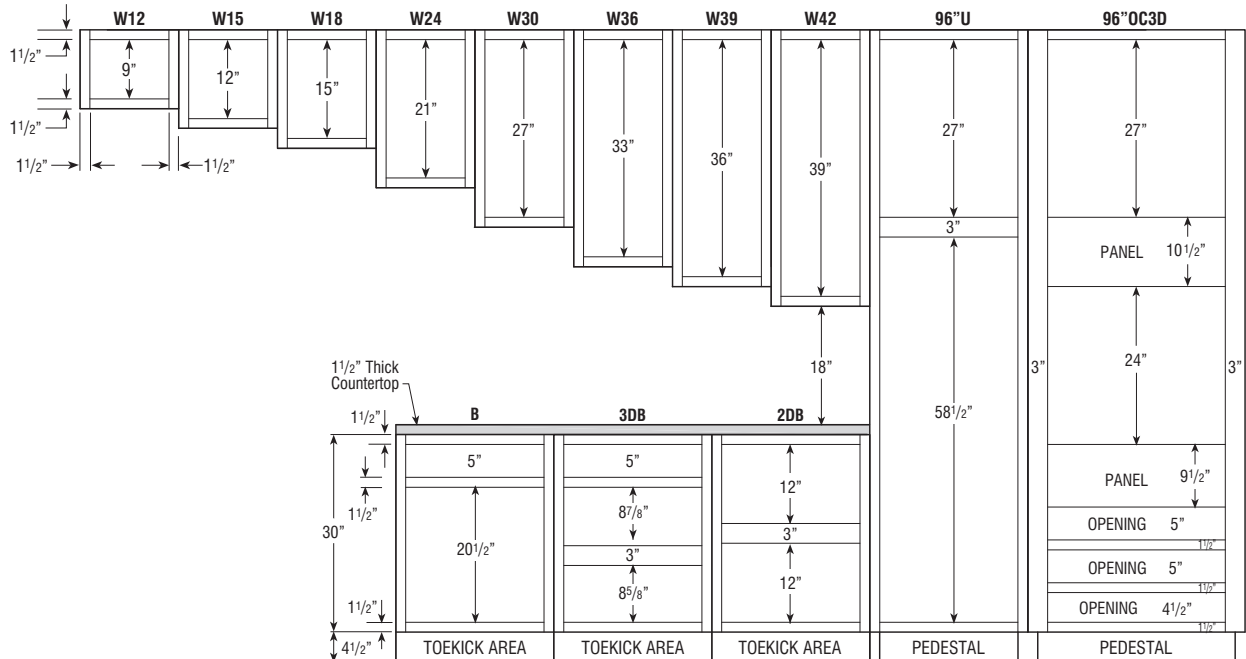
93" HIGH APPLICATION

Number after Wall Cabinet Represents Height of Cabinet



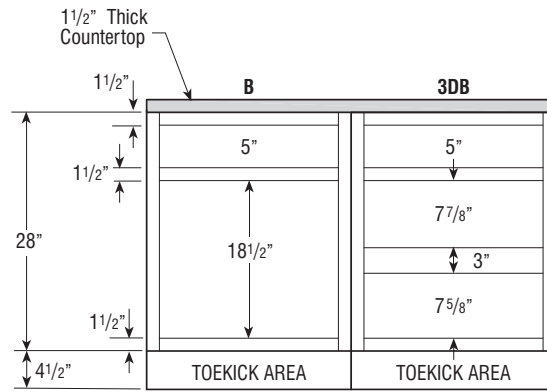
96" HIGH APPLICATION

Number after Wall Cabinet Represents Height of Cabinet

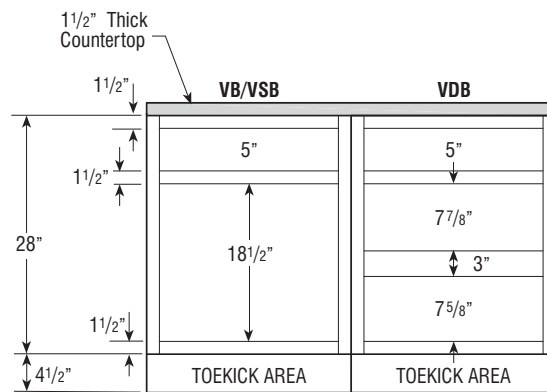


CABINET DIMENSIONS

32 1/2" HIGH BASE CABINETS



32 1/2" HIGH VANITY CABINETS



34 1/2" HIGH VANITY CABINETS

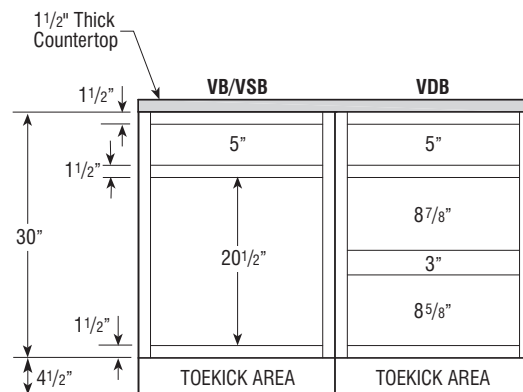


TABLE OF CONTENTS - WALL CABINETS



12" Deep Wall

12" High	19
15" High	19
18" High	20
24" High	20
30" High	21
36" High	23
39" High	25
42" High	27

12" Deep Wall Cut-for-glass

30" High	29
36" High	30
42" High	31

24" Deep Wall

12" High	32
18" High	33
24" High	33

24" Deep Microwave Wall Cabinet

18" High	34
----------------	----

12" Deep Wall Corner

30" High	35
36" High	36
39" High	37
42" High	37

12" Deep Diagonal Wall

30" High	38
36" High	38
39" High	38
42" High	38

12" Deep Diagonal Wall Cut-for-glass

30" High39
36" High39
42" High39

12" Deep Easy Reach Wall Corner

30" High40
36" High40

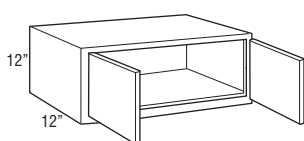
WALL DOUBLE DOOR

12" High

12" Deep

Model	Cubic Feet	1	2	3
W3012	3.4	216	256	295
W3312	3.7	248	293	336
W3612	4.0	287	339	391

• Not available in Omni Admiral.



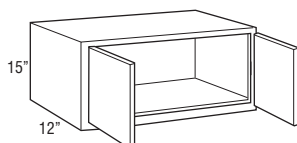
WALL DOUBLE DOOR

15" High

12" Deep

Model	Cubic Feet	1	2	3
W2415	3.2	285	336	386
W3015	3.9	259	306	349
W3315	4.2	282	333	386
W3615	4.6	309	363	418

• Not available in Omni Admiral.
 • W2415 not available in Classic Bark.



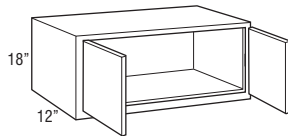
WALL DOUBLE DOOR

18" High

12" Deep

Model	Cubic Feet	1	2	3
W2418	3.8	293	343	397
W3018	4.9	309	363	418
W3318	5.3	324	380	438
W3618	5.8	331	388	445

- Not available in Omni Admiral.
- W2418 not available in Classic Bark.



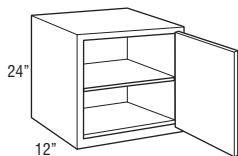
WALL SINGLE DOOR

24" High

12" Deep

Model	Cubic Feet	1	2	3
W2124R	4.6	287	339	391

- Cabinet hinged on the right; may be flipped for left hinge application.
- Not available in Omni Admiral.



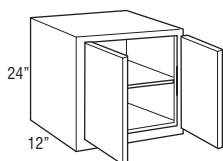
WALL DOUBLE DOOR

24" High

12" Deep

Model	Cubic Feet	1	2	3
W2424	5.2	312	366	422
W3024	6.4	345	404	468
W3324	7.0	369	435	499
W3624	7.6	386	452	518

• Not available in Omni Admiral.



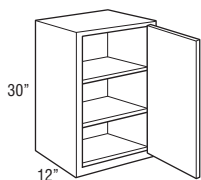
WALL SINGLE DOOR

30" High

12" Deep

Model	Cubic Feet	1	2	3
W930R	2.6	244	282	324
W1230R	3.4	248	295	339
W1530R	4.1	262	312	363
W1830R	4.9	285	336	388
W2130R	5.6	309	363	418

• Cabinet hinged on the right; may be flipped for left hinge application.
 • W930R, W1230R, W1530R not available in Omni Admiral.



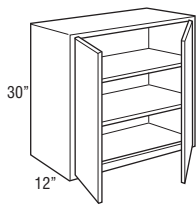
WALL DOUBLE DOOR

30" High

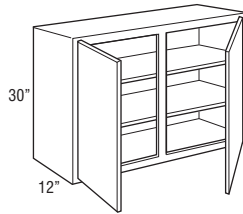
12" Deep

Model	Cubic Feet	1	2	3
W2430	6.4	336	397	452
W2730	7.2	372	438	508
W3030	7.9	388	455	520
W3330	8.7	427	503	575
W3630	9.4	442	518	595
W4230	11.0	484	571	657

• W3330 and W4230 not available in Omni Admiral.



W2430-W3630



W4230

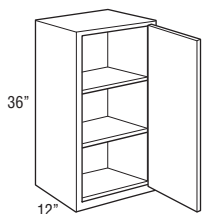
WALL SINGLE DOOR

36" High

12" Deep

Model	Cubic Feet	1	2	3
W936R	3.1	279	324	376
W1236R	4.0	293	341	397
W1536R	4.9	303	360	409
W1836R	5.8	331	388	445
W2136R	6.7	360	422	484

- Cabinet hinged on the right; may be flipped for left hinge application.
- W936R, W1236R, W1536R not available in Omni Admiral.



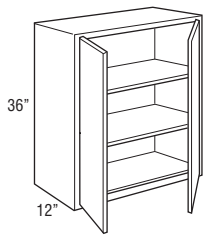
WALL DOUBLE DOOR

36" High

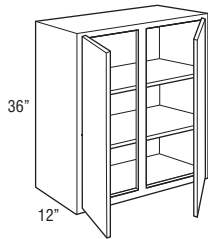
12" Deep

Model	Cubic Feet	1	2	3
W2436	7.6	391	461	532
W2736	8.5	432	508	584
W3036	9.4	448	529	610
W3336	10.3	499	584	666
W3636	11.2	515	600	693
W4236	13.1	575	674	777

• W2436R, W3336, W4236 not available in Omni Admiral.



W2436-W3636



W4236

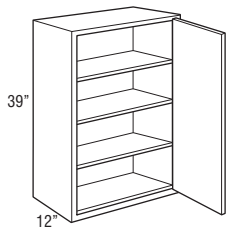
WALL SINGLE DOOR

39" High

12" Deep

Model	Cubic Feet	1	2	3
W939R	3.3	293	334	386
W1239R	4.3	307	352	404
W1539R	5.3	324	371	425
W1839R	6.3	349	400	461
W2139R	7.3	379	435	502

- Cabinet hinged on the right; may be flipped for left hinge application.
- Not available in Classic Bark and Omni Admiral.



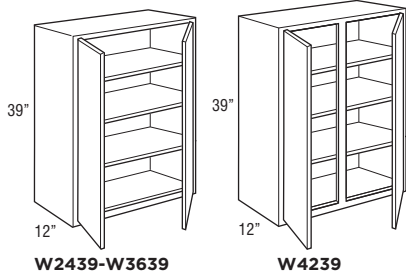
WALL DOUBLE DOOR

39" High

12" Deep

Model	Cubic Feet	1	2	3
W2439	8.2	411	471	542
W2739	9.2	454	521	599
W3039	10.2	474	544	626
W3339	11.2	525	600	689
W3639	12.1	540	618	710
W4239	14.1	602	693	798

• Not available in Classic Bark and Omni Admiral.



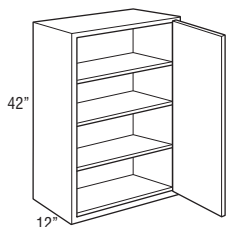
WALL SINGLE DOOR

42" High

12" Deep

Model	Cubic Feet	1	2	3
W942R	3.6	315	369	425
W1242R	4.6	331	388	445
W1542R	5.7	353	411	475
W1842R	6.7	376	442	513
W2142R	7.8	409	482	553

- Cabinet hinged on the right; may be flipped for left hinge application.
- Not available in Omni Admiral.



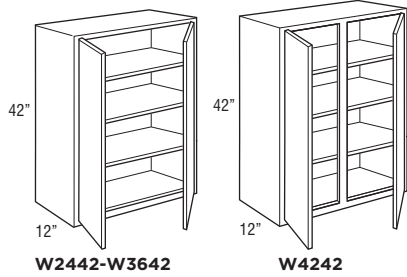
WALL DOUBLE DOOR

42" High

12" Deep

Model	Cubic Feet	1	2	3
W2442	8.8	442	518	595
W2742	9.9	487	575	660
W3042	11.0	515	600	693
W3342	12.0	566	662	764
W3642	13.1	580	684	784
W4242	15.2	647	764	881

• Not available in Omni Admiral.



WALL CUT-FOR-GLASS CABINETS

RECOMMENDED GLASS SIZE FOR WALL CABINET DOORS			
SKU	Omni Door Size	Door Route Size	Glass Size
WCG1530R	14 1/2" x 29 1/2"	11 1/4" x 26 1/4"	11 1/16" x 26 1/16"
WCG1830R	17 1/2" x 29 1/2"	14 1/4" x 26 1/4"	14 1/16" x 26 1/16"
WCG3030	14 11/16" x 29 1/2"	11 7/16" x 26 1/4"	11 1/4" x 26 1/16"
WCG3630	17 11/16" x 29 1/2"	14 7/16" x 26 1/4"	14 1/4" x 26 1/16"
WCG1536R	14 1/2" x 35 1/2"	11 1/4" x 32 1/4"	11 1/16" x 32 1/16"
WCG1836R	17 1/2" x 35 1/2"	14 1/4" x 32 1/4"	14 1/16" x 32 1/16"
WCG3036	14 11/16" x 35 1/2"	11 7/16" x 32 1/4"	11 1/4" x 32 1/16"
WCG3636	17 11/16" x 35 1/2"	14 7/16" x 32 1/4"	14 1/4" x 32 1/16"
WCG1542R	14 1/2" x 41 1/2"	11 1/4" x 38 1/4"	11 1/16" x 38 1/16"
WCG1842R	17 1/2" x 41 1/2"	14 1/4" x 38 1/4"	14 1/16" x 38 1/16"
WCG3042	14 11/16" x 41 1/2"	11 7/16" x 38 1/4"	11 1/4" x 38 1/16"
WCG3642	17 11/16" x 41 1/2"	14 7/16" x 38 1/4"	14 1/4" x 38 1/16"

*Recommended glass size dimensions are 3/16" smaller than glass route.

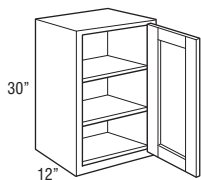
WALL CUT-FOR-GLASS

30" High

12" Deep

Model	Cubic Feet	1	2	3
WCG1530R	4.1	•	351	•
WCG1830R	4.9	•	373	•

- Cabinet hinged on the right; may be flipped for left hinge application.
- Glass clips included with door; glass not included.
- Cabinets will have matching interior.
- Not available in Omni Admiral.



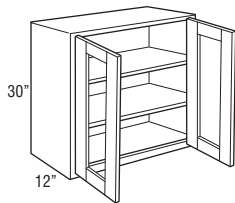
WALL CUT-FOR-GLASS

30" High

12" Deep

Model	Cubic Feet	1	2	3
WCG3030	7.9	•	539	•
WCG3630	9.4	•	599	•

- Glass clips included with door; glass not included.
- Cabinets will have matching interior.
- Not available in Omni Admiral.



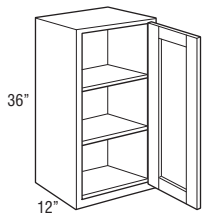
WALL CUT-FOR-GLASS

36" High

12" Deep

Model	Cubic Feet	1	2	3
WCG1536R	4.9	•	397	•
WCG1836R	5.8	•	425	•

- Cabinet hinged on the right; may be flipped for left hinge application.
- Glass clips included with door; glass not included.
- Cabinets will have matching interior.
- Not available in Omni Admiral.



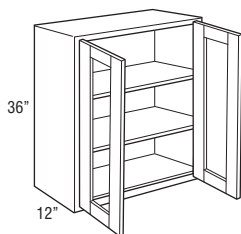
WALL CUT-FOR-GLASS

36" High

12" Deep

Model	Cubic Feet	1	2	3
WCG3036	9.4	•	610	•
WCG3636	11.2	•	678	•

- Glass clips included with door; glass not included.
- Cabinets will have matching interior.
- Not available in Omni Admiral.



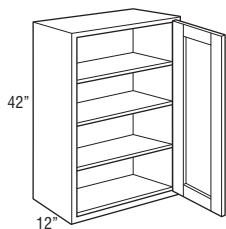
WALL CUT-FOR-GLASS

42" High

12" Deep

Model	Cubic Feet	1	2	3
WCG1542R	5.7	•	445	•
WCG1842R	6.7	•	475	•

- Cabinet hinged on the right; may be flipped for left hinge application.
- Glass clips included with door; glass not included.
- Cabinets will have matching interior.
- Not available in Omni Admiral.



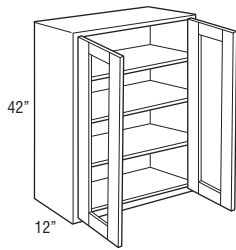
WALL CUT-FOR-GLASS

42" High

12" Deep

Model	Cubic Feet	1	2	3
WCG3042	11.0	•	678	•
WCG3642	13.0	•	760	•

- Glass clips included with door; glass not included.
- Cabinets will have matching interior.
- Not available in Omni Admiral.



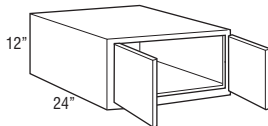
WALL DOUBLE DOOR

12" High

24" Deep

Model	Cubic Feet	1	2	3
W361224	7.4	349	409	473

- 24" deep cabinets must be supported on three surfaces when mounted.
- Load limit is 15 lbs. per square foot of load bearing surface.
- Not available in Omni Admiral.



W361224

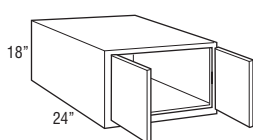
WALL DOUBLE DOOR

18" High

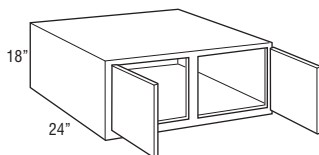
24" Deep

Model	Cubic Feet	1	2	3
W361824	10.7	378	445	515
W391824	11.5	397	465	534

- 24" deep cabinets must be supported on three surfaces when mounted.
- Load limit is 15 lbs. per square foot of load bearing surface.
- W391824 not available in Omni Admiral.



W361824



W391824

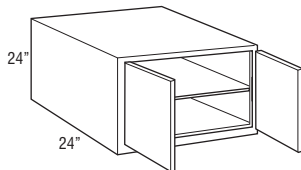
WALL DOUBLE DOOR

24" High

24" Deep

Model	Cubic Feet	1	2	3
W362424	14.0	432	508	584

- 24" deep cabinets must be supported on three surfaces when mounted.
- Load limit is 15 lbs. per square foot of load bearing surface.
- Not available in Omni Admiral.



W362424

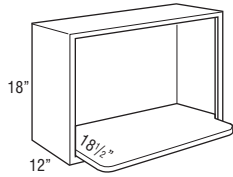
MICROWAVE WALL CABINET

18" High

24" Deep

Model	Cubic Feet	1	2	3
MW3018 <small>new</small>	4.9	400	400	400

- Includes one 3/4" shelf with six mounting screws. Microwave shelf extends beyond the front of the cabinet by 6 1/2", for a total shelf depth of 18 1/2".
- Microwave cabinet must be attached to wall stud and adjacent cabinets on both sides for support.
- Finished matching interior.

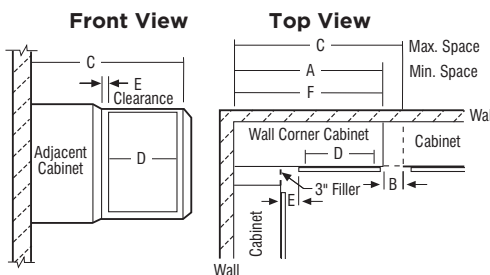


Model	Opening Width	Opening Height
MW3018	27"	14 1/2"

WALL CORNER CABINETS

SKU	A Min. Space	B Max. Pull	C Max. Space	D Cabinet Opening	E Full Overlay		E Partial Overlay		F Actual Cabinet
					At Min.	At Max.	At Min.	At Max.	
WC30...	30"	5"	35"	13 1/2"	1 3/4"	6 3/4"	2 1/2"	7 1/2"	30"
WC36...	36"	5"	41"	19 1/2"	1 3/4"	6 3/4"	2 1/2"	7 1/2"	36"
WC42...	42"	4 1/2"	46 1/2"	24"	3 1/4"	7 3/4"	4"	8 1/2"	42"

- Wall corner cabinets may be installed flush to the wall (left) or pulled 3" away from wall (right) to accommodate add dimensions in a kitchen design. In either case, the adjoining run of 12" wall cabinets plus a 3" filler will butt against the solid-wood panel.
- When a cabinet is "pulled" it will use proportionally more space, for example, a 30" wide WC, pulled 2" will use 32" of space.
- Blind side of wall corner cabinets cannot be installed next to a range hood unit due to door interference.



NOTE:
All outside stiles are 1 1/2" wide

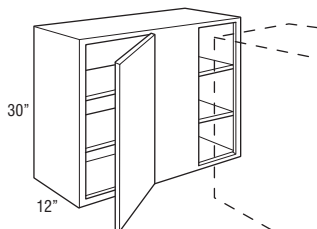
WALL CORNER SINGLE DOOR

30" High

12" Deep

Model	Cubic Feet	1	2	3
WC3030S	7.9	336	397	452
WC3630S	9.4	372	438	503

- Right blind shown; cabinet may be flipped for left blind application.
- Filler required for installation. Must be ordered separately.
- Not available in Omni Admiral.



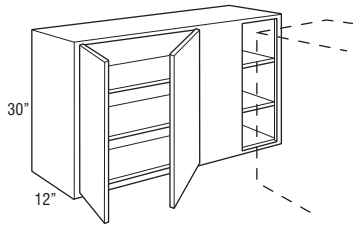
WALL CORNER DOUBLE DOOR

30" High

12" Deep

Model	Cubic Feet	1	2	3
WC4230S	11.0	432	508	584

- Right blind shown; cabinet may be flipped for left blind application.
- Filler required for installation. Must be ordered separately.
- Not available in Omni Admiral.



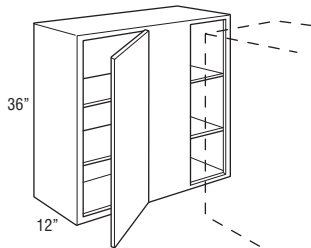
WALL CORNER SINGLE DOOR

36" High

12" Deep

Model	Cubic Feet	1	2	3
WC3036S	9.4	404	478	551
WC3636S	11.2	442	518	595

- Right blind shown; cabinet may be flipped for left blind application.
- Filler required for installation. Must be ordered separately.
- Not available in Omni Admiral.



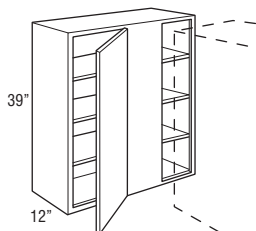
WALL CORNER SINGLE DOOR

39" High

12" Deep

Model	Cubic Feet	1	2	3
WC3039S	10.2	432	496	574
WC3639S	12.1	475	541	620

- Right blind shown; cabinet may be flipped for left blind application.
- Filler required for installation. Must be ordered separately.
- Not available in Classic Bark and Omni Admiral.



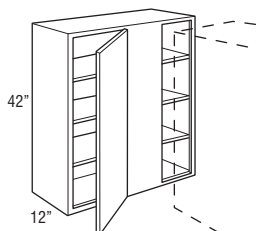
WALL CORNER SINGLE DOOR

42" High

12" Deep

Model	Cubic Feet	1	2	3
WC3042S	11.0	455	534	618
WC3642S	13.1	499	584	666

- Right blind shown; cabinet may be flipped for left blind application.
- Filler required for installation. Must be ordered separately.
- Not available in Omni Admiral.



DIAGONAL WALL

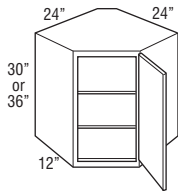
30" High

36" High

12" Deep

Model	Cubic Feet	1	2	3
DW302424R	10.8	388	455	520
DW362424R	12.9	465	551	631

- Cabinet hinged on the right; may be flipped for left hinge application.
- Cabinets require 24" x 24" of corner wall space.
- DW362424R not available in Omni Admiral.



DIAGONAL WALL

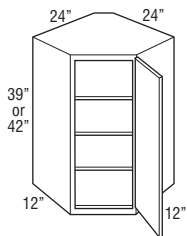
39" High

42" High

12" Deep

Model	Cubic Feet	1	2	3
DW392424R	13.9	534	633	725
DW422424R	14.9	561	660	761

- Cabinet hinged on the right; may be flipped for left hinge application.
- Cabinets require 24" x 24" of corner wall space.
- Not available in Omni Admiral.
- DW392424R also not available in Classic Bark.



DIAGONAL WALL CUT-FOR-GLASS CABINETS

RECOMMENDED GLASS SIZE FOR WALL CABINET DOORS			
SKU	Omni Door Size	Door Route Size	Glass Size
DWCG302424R	14 1/2" x 29 1/2"	11 1/4" x 26 1/4"	11 1/16" x 26 1/16"
DWCG362424R	14 1/2" x 35 1/2"	11 1/4" x 32 1/4"	11 1/16" x 32 1/16"
DWCG422424R	14 1/2" x 41 1/2"	11 1/4" x 38 1/4"	11 1/16" x 38 1/16"

*Recommended glass size dimensions are 3/16" smaller than glass route.

DIAGONAL WALL CUT-FOR-GLASS

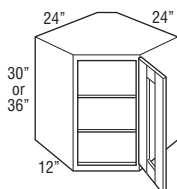
30" High

36" High

12" Deep

Model	Cubic Feet	1	2	3
DWCG302424R	10.8	•	539	•
DWCG362424R	12.9	•	631	•

- Cabinet hinged on the right; may be flipped for left hinge application.
- Cabinets require 24" x 24" of corner wall space.
- Glass clips included with door; glass not included.
- Cabinets will have matching interior.
- Not available in Omni Admiral.



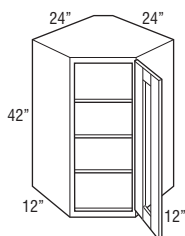
DIAGONAL WALL CUT-FOR-GLASS

42" High

12" Deep

Model	Cubic Feet	1	2	3
DWCG422424R	14.9	•	737	•

- Cabinet hinged on the right; may be flipped for left hinge application.
- Cabinets require 24" x 24" of corner wall space.
- Glass clips included with door; glass not included.
- Cabinets will have matching interior.
- Not available in Omni Admiral.



EASY REACH WALL CORNER

30" High

36" High

12" Deep

Model	Cubic Feet	1	2	3
ER30R <i>new</i>	12.3	493	578	661
ER36R <i>new</i>	14.6	592	700	803

- Requires 24" x 24" of corner wall space.
- Adjustable shelves.
- Cabinet hinged on the right; may be flipped for left hinge application.
- Hinged door opens 170°.
- Integrated soft-close hinge not included.
- Not available in Omni Admiral.

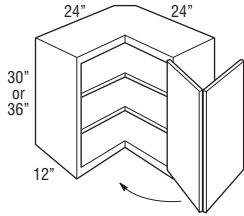


TABLE OF CONTENTS – BASE CABINETS



34 1/2" High, 24" Deep

Base with Drawer	42
Full Height Base	43
Drawer Base	44
Base Built-in Microwave Cabinet with Drawer	46
Base Wastebasket	46
Sink Base	47
Base Corner	50

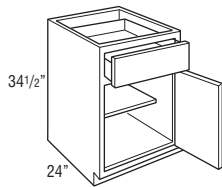
BASE SINGLE DOOR

34½" High

24" Deep

Model	Cubic Feet	1	2	3
B9R	5.4	287	339	391
B12R	7.1	312	366	422
B15R	8.7	336	397	452
B18R	10.3	363	427	491
B21R	11.7	391	461	532

- Cabinet hinged on the right; door may be flipped for left hinge application.
- Roll tray kits available for 15"-21" widths.
- B9R not available in Omni Admiral.



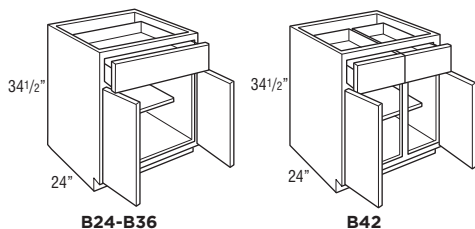
BASE DOUBLE DOOR

34 1/2" High

24" Deep

Model	Cubic Feet	1	2	3
B24	13.3	452	532	615
B27	14.9	487	575	660
B30	16.5	522	621	710
B33	18.1	568	666	766
B36	19.6	615	720	830
B42	22.8	662	779	896

- Roll tray kits available for 24"-42" widths.
- B42 not available in Omni Admiral.



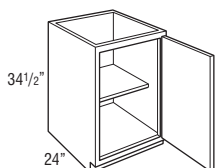
FULL HEIGHT BASE SINGLE DOOR

34 1/2" High

24" Deep

Model	Cubic Feet	1	2	3
B9FHR	5.4	281	331	380
B15FHR	8.5	282	333	386
B18FHR	10.1	303	360	409

- Cabinet hinged on the right; door may be flipped for left hinge application.
- Roll tray kits available for 15"-18" widths.
- B15FHR, B18FHR not available in Omni Admiral.



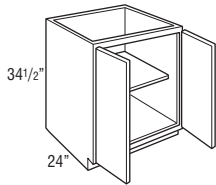
FULL HEIGHT BASE DOUBLE DOOR

34 1/2" High

24" Deep

Model	Cubic Feet	1	2	3
B24FH	13.3	372	438	503
B30FH	16.5	432	508	584
B36FH	19.6	461	541	624

- Roll tray kits available for 24"-36" widths.
- Not available in Omni Admiral.



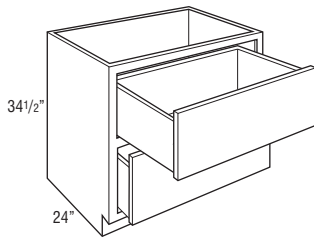
2 DRAWER BASE

34 1/2" High

24" Deep

Model	Cubic Feet	1	2	3
2DB30	16.5	686	810	932
2DB36	19.6	752	885	1017

- On door styles with slab drawer fronts, all drawer fronts will be slab.
- Not available in Omni Admiral.



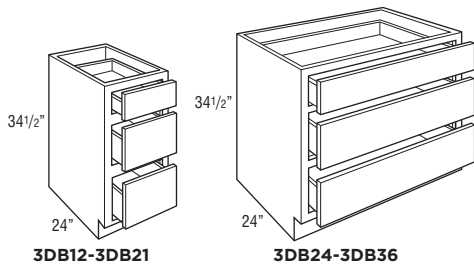
3 DRAWER BASE

34½" High

24" Deep

Model	Cubic Feet	1	2	3
3DB12	7.0	438	515	591
3DB15	8.5	478	561	645
3DB18	10.1	520	618	708
3DB21	11.7	575	674	777
3DB24	13.3	631	740	851
3DB30	16.5	686	810	932
3DB36	19.6	752	885	1017

- On door styles with slab drawer fronts, all drawer fronts will be slab.
- 3DB12 not available in Omni Admiral.



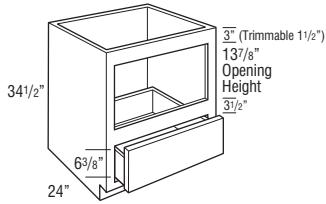
BASE BUILT-IN MICROWAVE WITH DRAWER

34 1/2" High

24" Deep

Model	Cubic Feet	1	2	3
BBMWD30	16.1	656	776	889

- The usable cabinet face height between top of drawer front and top of cabinet is 19 1/8" for partial overlay and 19 3/4" for full overlay. Be sure to verify overall appliance height, gap requirements, and cut-out dimensions with cabinet specifications.
- Metal appliance support brackets included.



Model	Opening Width	Maximum Width	Opening Height	Maximum Height
BBMWD30	27"	28 1/2"	13 7/8"	16 7/8"

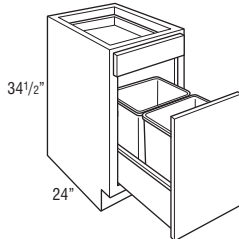
BASE WASTEBASKET

34 1/2" High

24" Deep

Model	Cubic Feet	1	2	3
BWB18	10.3	595	704	810

- Pull-out features undermount full extension, soft-close guides.
- Includes two 35 quart gray wastebaskets.



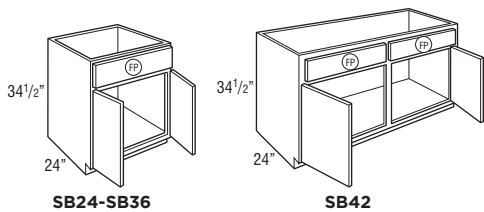
SINK BASE

34 1/2" High

24" Deep

Model	Cubic Feet	1	2	3
SB24	13.3	353	411	475
SB27	14.9	372	438	508
SB30	16.5	391	457	522
SB33	18.1	427	505	580
SB36	19.6	448	529	610
SB42	22.8	475	557	642

- Mini Touch-Up Kit (MTUK) included. MTUK includes small touch-up marker and small fill stick.
- Tilt-out tray kits available.
- SB24, SB27, SB42 not available in Omni Admiral.



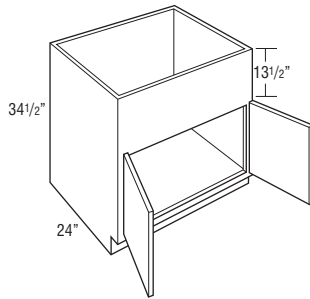
COUNTRY SINK BASE

34 1/2" High

24" Deep

Model	Cubic Feet	1	2	3
CNTYSB36	19.6	561	660	761

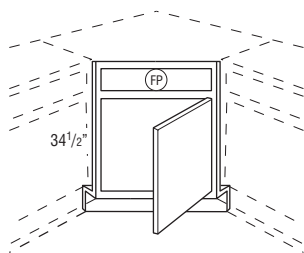
- 13 1/2" panel can be trimmed up to 12".
- Mini Touch-Up Kit (MTUK) included. MTUK includes small touch-up marker and small fill stick.
- Refer to manufacturer's recommendations for additional support required for apron front sinks.



ANGLED CORNER SINK FRONT 34 1/2" High

Model	Cubic Feet	1	2	3
ACSF36R	2.9	282	333	386

- Frame edges beveled at 45°.
- Toekick and toekick retainer shipped unattached from the face frame.
- Sink base floor not included.
- Cabinet hinged on the right; door may be flipped for left hinge application.
- Not available in Omni Admiral.



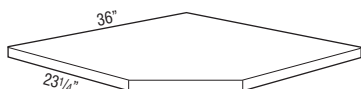
Max. Sink Widths if cut-out is 4" back from face of front frame

Wall Width	Frame	Maximum Sink Width	Maximum Sink Depth
36" x 36"	17"	25 3/4"	27 11/32"

ANGLED CORNER SINK FRONT BOTTOM

Model	Cubic Feet	1	2	3
ACSF36	1.0	152	152	152

- Designed for use with Angled Corner Sink Front.
- 3/4" thick.
- 1-side laminated plywood.
- Not available in Omni Admiral.



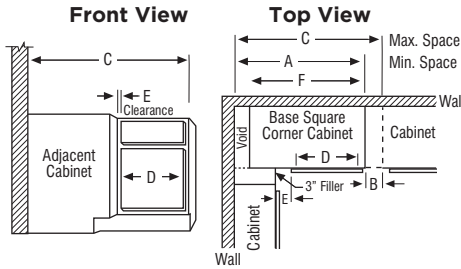
BASE CORNER CABINETS

SKU	A	B	C	D	E		E		F
	Min. Space	Max. Pull	Max. Space	Cabinet Opening	Full Overlay At Min.	Full Overlay At Max.	Partial Overlay At Min.	Partial Overlay At Max.	Actual Cabinet
BC36S	36"	6"	42"	7 1/2"	1 3/4"	7 3/4"	2 1/2"	8 1/2"	27"
BC42S	42"	6"	48"	13 1/2"	1 3/4"	7 3/4"	2 1/2"	8 1/2"	39"
BC48S	48"	3"	51"	16 1/2"	4 3/4"	7 3/4"	5 1/2"	8 1/2"	45"

- BCs use the wall space the nomenclature implies and may be pulled up to 3" to accommodate odd dimensions in a kitchen.
- Remember to use 3" filler on adjoining cabinets.
- The adjoining run of cabinets will cover the void.

NOTE:

Full overlay styles must be pulled an additional 1 1/2" to ensure proper drawer/pull clearance. 1 1/2" pull is not included in minimum and maximum list.



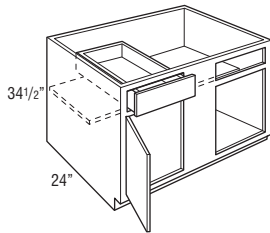
BASE CORNER SINGLE DOOR

34 1/2" High

24" Deep

Model	Cubic Feet	1	2	3
BC36S	15.0	427	505	580
BC42S	21.3	482	568	655
BC48S	24.5	561	660	761

- Right blind shown; door and drawer can be reversed for left blind application.
- Filler required for installation. Must be ordered separately.
- BC36S and BC48S not available in Omni Admiral.



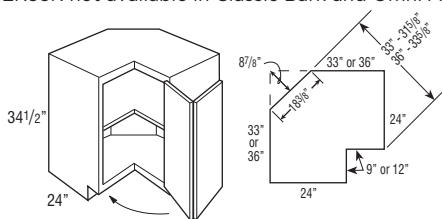
BASE EASY REACH

34 1/2" High

24" Deep

Model	Cubic Feet	1	2	3
BER33R	26.3	663	762	877
BER36R	29.1	708	832	960

- BER33R wall width is 33" x 33". BER36R wall width is 36" x 36".
- Decorative hardware screws must be countersunk to prevent scratching of adjacent cabinets and face frame of BER.
- Not recommended for use next to an appliance deeper than standard cabinet depth.
- Soft-close not available.
- Cabinet hinged on the right; door may be flipped for left hinge application.
- BER33R not available in Classic Bark and Omni Admiral.



Due to the fixed shelves mounting shelves cannot be retrofitted.

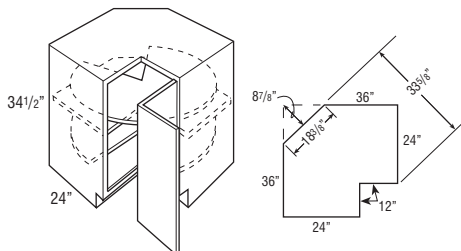
SUPER LAZY SUSAN

34 1/2" High

24" Deep

Model	Cubic Feet	1	2	3
SLS36R	29.1	896	1050	1207

- Wall width is 36" x 36".
- Features two plywood revolving shelves. Lower shelf is mounted to floor. Upper shelf is mounted to fixed shelf.
- Decorative hardware screws must be countersunk to prevent scratching adjacent cabinets and face frame of SLS.
- Not recommended for use next to an appliance deeper than standard cabinet depth.
- Soft-close not available.
- Cabinet hinged on the right; door may be flipped for left hinge application.



Due to the fixed shelves mounting shelves cannot be retrofitted.

BASE LAZY SUSAN

34 1/2" High

24" Deep

Model	Cubic Feet	1	2	3
BLS36R	20.4	637	750	859

- Wall width is 36" x 36".
- Cabinet is drum-shaped; adjoining cabinets create sides.
- Features two white plastic shelves.
- Decorative hardware screws must be countersunk to prevent scratching of adjacent cabinets and face frame of BLS.
- Not recommended for use next to an appliance deeper than standard cabinet depth.
- Soft-close not available.
- Cabinet hinged on the right; door may be flipped for left hinge application.
- Back material made from MDF.
- Not available in Omni Admiral.

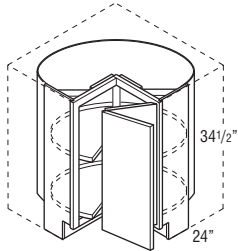
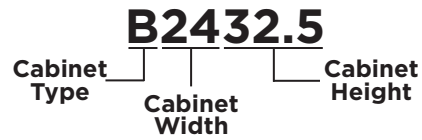


TABLE OF CONTENTS - UNIVERSAL DESIGN CABINETS



32 1/2" High, 24" Deep

Universal Design Base	54
Universal Design 3 Drawer Base	55
Universal Design Base Built-in Microwave Cabinet with Drawer	56
Universal Design Base Sink Removable	56
Universal Design Base Corner	57
Universal Design Vanity Base Sink Removable	58

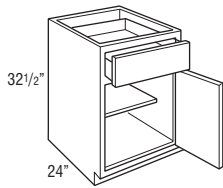
UNIVERSAL DESIGN, BASE SINGLE DOOR

32½" High

24" Deep

Model	Cubic Feet	1	2	3
B932.5R	5.0	•	339	•
B1232.5R	6.5	•	366	•
B1532.5R	8.0	•	397	•
B1832.5R	9.4	•	427	•
B2132.5R	10.9	•	461	•

- Cabinet hinged on the right; door may be flipped for left hinge application.
- Roll tray kits available for 15"-21" widths.
- Only available in Omni Snow.



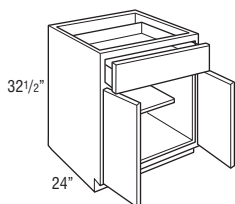
UNIVERSAL DESIGN, BASE DOUBLE DOOR

32 1/2" High

24" Deep

Model	Cubic Feet	1	2	3
B2432.5	12.4	•	532	•
B3032.5	15.3	•	621	•
B3332.5	16.8	•	666	•
B3632.5	18.3	•	720	•

- Roll tray kits available for 24"-36" widths.
- Only available in Omni Snow.



B2432.5-B3632.4

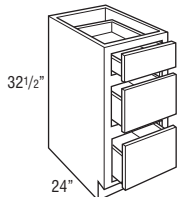
UNIVERSAL DESIGN, 3 DRAWER BASE

32 1/2" High

24" Deep

Model	Cubic Feet	1	2	3
3DB1232.5	6.3	•	515	•
3DB1532.5	8.0	•	561	•
3DB1832.5	9.4	•	618	•

- On door styles with slab drawer fronts, all drawer fronts will be slab.
- Only available in Omni Snow.



3DB1232.5-3DB1832.5

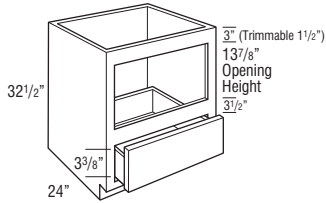
UNIVERSAL DESIGN, BASE BUILT-IN MICROWAVE WITH DRAWER

32 1/2" High

24" Deep

Model	Cubic Feet	1	2	3
BBMWD3032.5	15.3	•	737	•

- Matching Interior.
- Only available in Omni Snow.
- Metal appliance support brackets included.



Model	Opening Width	Maximum Width	Opening Height	Maximum Height
BBMWD30	27"	28 1/2"	13 7/8"	16 7/8"

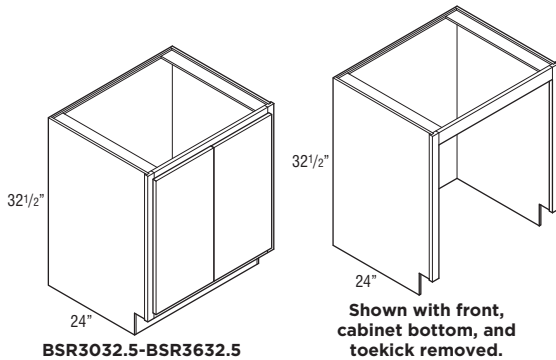
UNIVERSAL DESIGN, BASE SINK REMOVABLE

32 1/2" High

24" Deep

Model	Cubic Feet	1	2	3
BSR3032.5	13.7	•	376	•
BSR3332.5 <small>new</small>	14.9	•	386	•
BSR3632.5	16.4	•	397	•

- Cabinet must supported on both sides. Not intended for end of run.
- Front, cabinet bottom, and toekick are removable.
- Mini Touch-Up Kit (MTUK) included. MTUK includes small touch-up marker and small fill stick.
- Only available in Omni Snow.



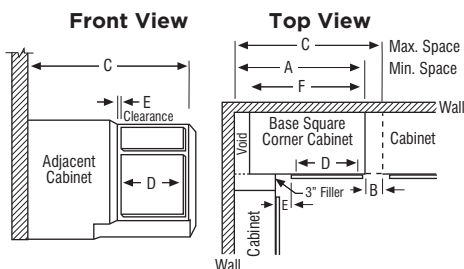
UNIVERSAL DESIGN CORNER CABINETS

SKU	A Min. Space	B Max. Pull	C Max. Space	D Cabinet Opening	E Full Overlay		E Partial Overlay		F Actual Cabinet
					At Min.	At Max.	At Min.	At Max.	
BC3632.5S	32"	6"	42"	7 1/2"	1 3/4"	7 3/4"	2 1/2"	8 1/2"	27"

- BCs use the wall space the nomenclature implies and may be pulled up to 3" to accommodate odd dimensions in a kitchen.
- Remember to use 3" filler on adjoining cabinets.
- The adjoining run of cabinets will cover the void.

NOTE:

Full overlay styles must be pulled an additional 1 1/2" to ensure proper drawer/pull clearance. 1 1/2" pull is not included in minimum and maximum list.



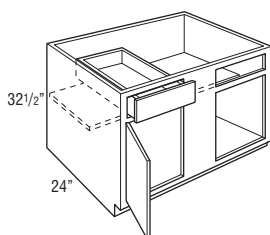
UNIVERSAL DESIGN, BASE CORNER SINGLE DOOR

32 1/2" High

24" Deep

Model	Cubic Feet	1	2	3
BC3632.5S	14.1	•	505	•

- Right blind shown; door and drawer can be reversed for left blind application.
- Filler required for installation. Must be ordered separately.
- Only available in Omni Snow.



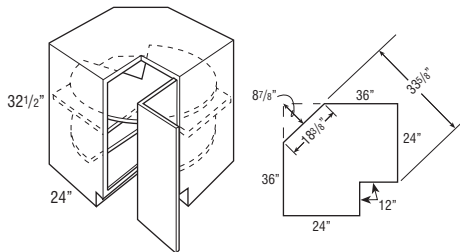
UNIVERSAL DESIGN, SUPER LAZY SUSAN

32 1/2" High

24" Deep

Model	Cubic Feet	1	2	3
SLS3632.5R	18.4	•	1050	•

- Wall width is 36" x 36".
- Features two plywood revolving shelves. Lower shelf is mounted to floor. Upper shelf is mounted to fixed shelf.
- Decorative hardware screws must be countersunk to prevent scratching adjacent cabinets and face frame of SLS.
- Not recommended for use next to an appliance deeper than standard cabinet depth.
- Soft-close not available.
- Cabinet hinged on the right; door may be flipped for left hinge application.
- Only available in Omni Snow.



Due to the fixed shelves mounting shelves cannot be retrofitted.

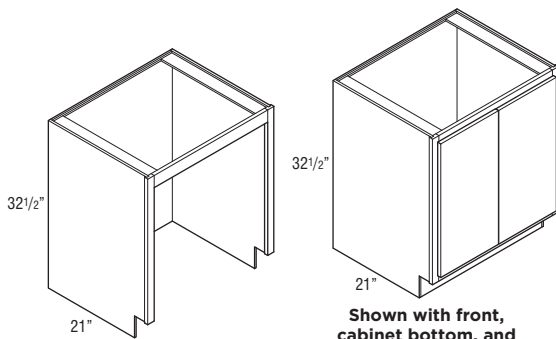
UNIVERSAL DESIGN, VANITY BASE SINK REMOVABLE

32 1/2" High

21" Deep

Model	Cubic Feet	1	2	3
VBSR3032.521	13.7	•	484	•
VBSR3332.521 new	14.9	•	498	•
VBSR3632.521	16.3	•	510	•

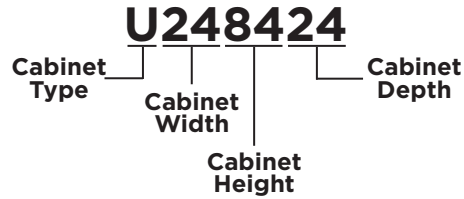
- Cabinet must supported on both sides. Not intended for end of run.
- Front, cabinet bottom, and toe kick are removable.
- Mini Touch-Up Kit (MTUK) included. MTUK includes small touch-up marker and small fill stick.
- Only available in Omni Snow.



VBSR3032.521-VBSR3632.521

Shown with front, cabinet bottom, and toe kick removed.

TABLE OF CONTENTS - TALL CABINETS



18" Wide Utility Single Door

84" High	60
90" High	60
93" High	61
96" High	61

24" Wide Utility Double Door

84" High	62
90" High	62
93" High	63
96" High	63

30" Wide Utility Double Door

84" High	64
90" High	64
93" High	65
96" High	65

33" Wide Single Oven 3 Drawers

84" High	66
90" High	66
93" High	67
96" High	67

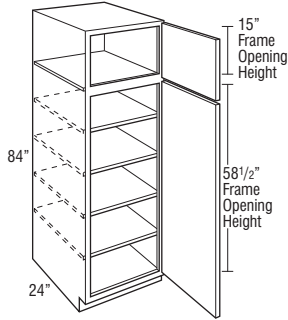
18" WIDE UTILITY SINGLE DOOR

84" High

24" Deep

Model	Cubic Feet	1	2	3
U188424R	23.4	803	943	1085

- Roll tray kits available.
- Cabinet hinged on the right; door may be flipped for left hinge application.



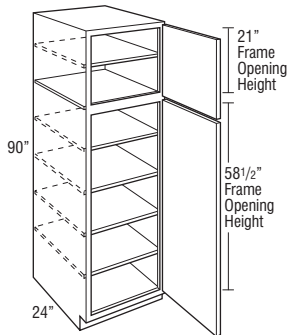
18" WIDE UTILITY SINGLE DOOR

90" High

24" Deep

Model	Cubic Feet	1	2	3
U189024R	25.4	896	1050	1207

- Roll tray kits available.
- Cabinet hinged on the right; door may be flipped for left hinge application.



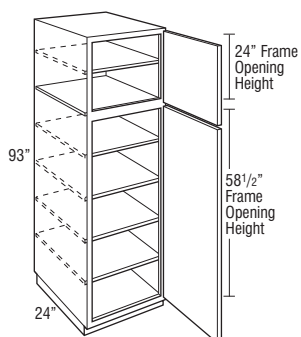
18" WIDE UTILITY SINGLE DOOR

93" High

24" Deep

Model	Cubic Feet	1	2	3
U189324R	26.1	911	1069	1231

- Separate pedestal base included on 93" tall.
- Roll tray kits available.
- Cabinet hinged on the right; door may be flipped for left hinge application.
- Not available in Classic Bark and Omni Admiral.



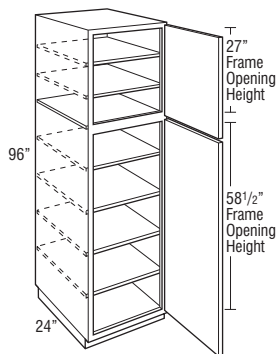
18" WIDE UTILITY SINGLE DOOR

96" High

24" Deep

Model	Cubic Feet	1	2	3
U189624R	27.0	998	1173	1349

- Separate pedestal base included on 96" tall.
- Roll tray kits available.
- Cabinet hinged on the right; door may be flipped for left hinge application.
- Not available in Omni Admiral.



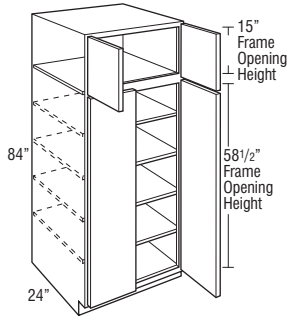
24" WIDE UTILITY DOUBLE DOOR

84" High

24" Deep

Model	Cubic Feet	1	2	3
U248424	30.9	975	1151	1325

- Roll tray kits available.
- Not available in Omni Admiral.



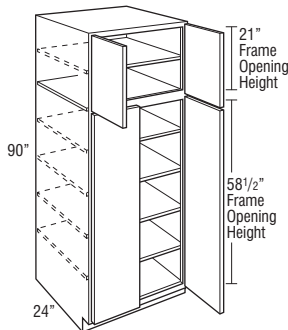
24" WIDE UTILITY DOUBLE DOOR

90" High

24" Deep

Model	Cubic Feet	1	2	3
U249024	33.4	1096	1289	1480

- Roll tray kits available.
- Not available in Omni Admiral.



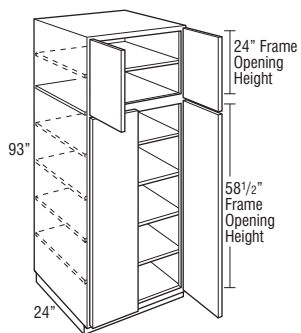
24" WIDE UTILITY DOUBLE DOOR

93" High

24" Deep

Model	Cubic Feet	1	2	3
U249324	34.5	1118	1315	1510

- Separate pedestal base included on 93" tall.
- Roll tray kits available.
- Not available in Classic Bark and Omni Admiral.



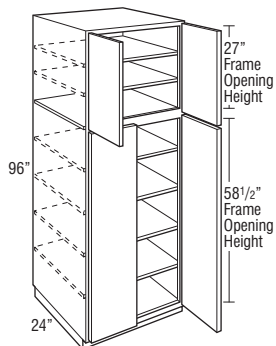
24" WIDE UTILITY DOUBLE DOOR

96" High

24" Deep

Model	Cubic Feet	1	2	3
U249624	35.6	1228	1445	1659

- Separate pedestal base included on 96" tall.
- Roll tray kits available.
- Not available in Omni Admiral.



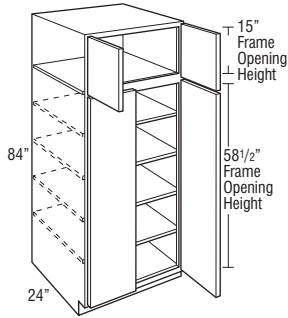
30" WIDE UTILITY DOUBLE DOOR

84" High

24" Deep

Model	Cubic Feet	1	2	3
U308424	43.0	•	1360	1563

- Roll tray kits available.
- Not available in Omni Admiral.



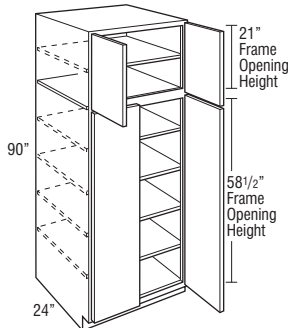
30" WIDE UTILITY DOUBLE DOOR

90" High

24" Deep

Model	Cubic Feet	1	2	3
U309024	46.0	•	1527	1755

- Roll tray kits available.
- Not available in Omni Admiral.



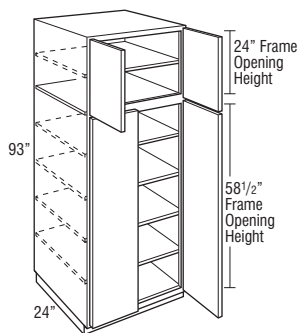
30" WIDE UTILITY DOUBLE DOOR

93" High

24" Deep

Model	Cubic Feet	1	2	3
U309324	46.5	•	1622	1864

- Separate pedestal base included on 93" tall.
- Roll tray kits available.
- Not available in Omni Admiral.



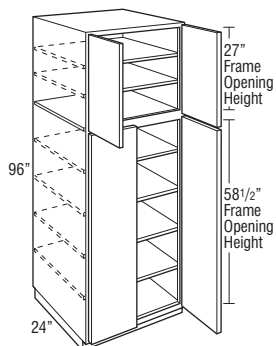
30" WIDE UTILITY DOUBLE DOOR

96" High

24" Deep

Model	Cubic Feet	1	2	3
U309624	49.0	•	1716	1973

- Separate pedestal base included on 96" tall.
- Roll tray kits available.
- Not available in Omni Admiral.



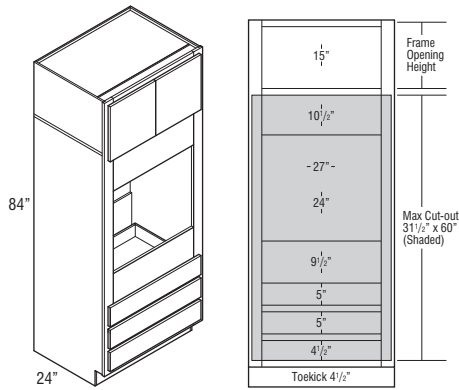
33" WIDE SINGLE OVEN 3 DRAWERS

84" High

24" Deep

Model	Cubic Feet	1	2	3
OC3D338424	47.7	1279	1501	1725

- Oven cabinets feature an open back in cut-out area designed to improve field appliance installation.
- Metal appliance support brackets included for 24" deep cabinets.
- Confirm a heat shield is built into your appliance by the manufacturer.
- Not available in Omni Graphite, Omni Beachwood, and Omni Admiral.



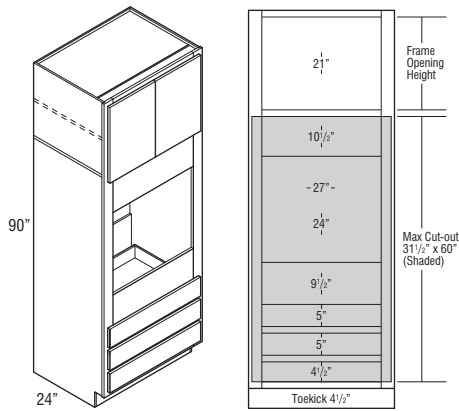
33" WIDE SINGLE OVEN 3 DRAWERS

90" High

24" Deep

Model	Cubic Feet	1	2	3
OC3D339024	51.0	1497	1760	2024

- Oven cabinets feature an open back in cut-out area designed to improve field appliance installation.
- Metal appliance support brackets included for 24" deep cabinets.
- Confirm a heat shield is built into your appliance by the manufacturer.
- Not available in Omni Admiral.



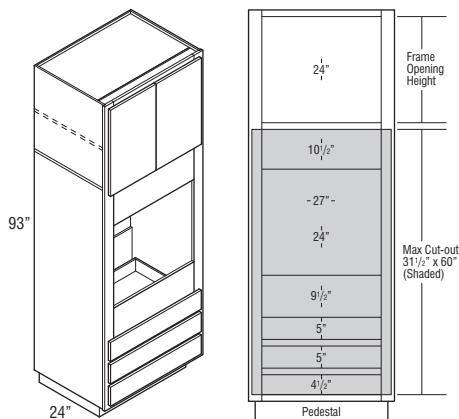
33" WIDE SINGLE OVEN 3 DRAWERS

93" High

24" Deep

Model	Cubic Feet	1	2	3
OC3D339324	52.6	1531	1802	2073

- Oven cabinets feature an open back in cut-out area designed to improve field appliance installation.
- Metal appliance support brackets included for 24" deep cabinets.
- Separate pedestal base included on 93" tall.
- Confirm a heat shield is built into your appliance by the manufacturer.
- Not available in Classic Bark and Omni Admiral.



33" WIDE SINGLE OVEN 3 DRAWERS

96" High

24" Deep

Model	Cubic Feet	1	2	3
OC3D339624	54.3	1685	1985	2283

- Oven cabinets feature an open back in cut-out area designed to improve field appliance installation.
- Metal appliance support brackets included for 24" deep cabinets.
- Separate pedestal base included on 96" tall.
- Confirm a heat shield is built into your appliance by the manufacturer.
- Not available in Omni Admiral.

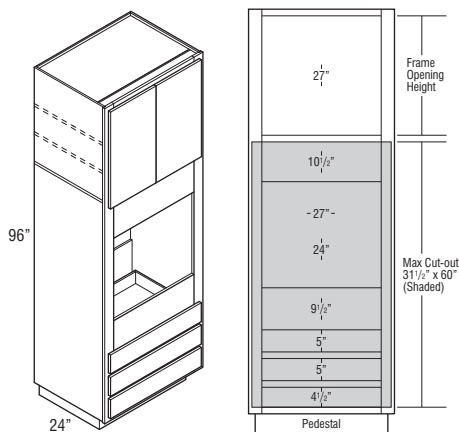
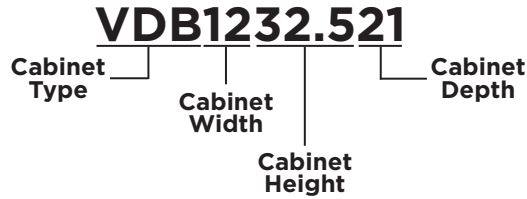


TABLE OF CONTENTS - VANITY CABINETS



32 1/2" High, 21" Deep

Vanity Drawer Base69
 Vanity Sink Base70

34 1/2" High, 18" Deep

Vanity Sink Base70

34 1/2" High, 21" Deep

Vanity Base with Drawer71
 Vanity Drawer Base71
 Vanity Sink Base72
 Vanity Sink Base - Admiral72
 Vanity Sink Drawer Base73

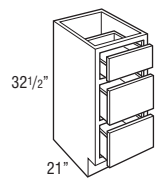
VANITY DRAWER BASE

32½" High

21" Deep

Model	Cubic Feet	1	2	3
VDB1232.521	5.7	425	499	571
VDB1532.521	7.1	465	548	631
VDB1832.521	8.4	508	595	686

- On door styles with slab drawer fronts, all drawer fronts will be slab.
- Not available in Omni Admiral.



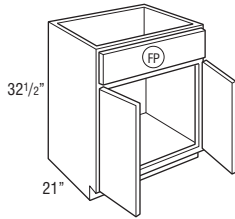
VANITY SINK BASE

32½" High

21" Deep

Model	Cubic Feet	1	2	3
VSB2432.521	11.0	339	401	461
VSB3032.521	13.7	378	445	515
VSB3632.521	16.3	438	515	591

- Tilt-out tray kits available.
- Not available in Omni Admiral.



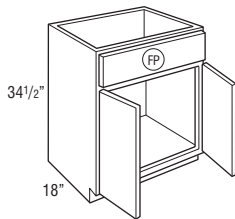
VANITY SINK BASE

34½" High

18" Deep

Model	Cubic Feet	1	2	3
VSB243418	10.2	•	486	•

- Tilt-out tray kits available.
- Only available in Omni Snow.



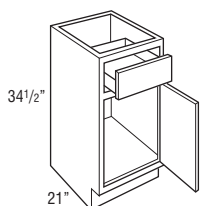
VANITY BASE SINGLE DOOR

34½" High

21" Deep

Model	Cubic Feet	1	2	3
VB153421R	7.6	324	380	438
VB183421R	9.0	353	411	475

- Cabinet hinged on the right; door may be flipped for left hinge application.
- Not available in Omni Admiral.



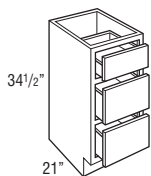
VANITY DRAWER BASE

34½" High

21" Deep

Model	Cubic Feet	1	2	3
VDB123421	6.2	425	499	571
VDB153421	7.6	465	548	631
VDB183421	8.9	508	595	686

- On door styles with slab drawer fronts, all drawer fronts will be slab.
- Not available in Omni Admiral.



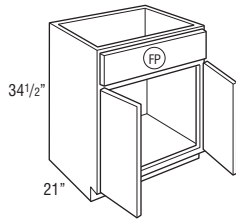
VANITY SINK BASE

34½" High

21" Deep

Model	Cubic Feet	1	2	3
VSB243421	11.9	339	401	461
VSB303421	14.7	378	445	515
VSB363421	17.5	438	515	591

• Tilt-out tray kits available.



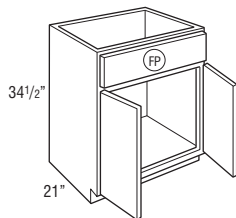
VANITY SINK BASE - ADMIRAL

34½" High

21" Deep

Model	Cubic Feet	1	2	3
VSB243421 new	11.9	•	482	•
VSB303421 new	14.7	•	534	•
VSB363421 new	17.5	•	617	•

• Tilt-out tray kits available.



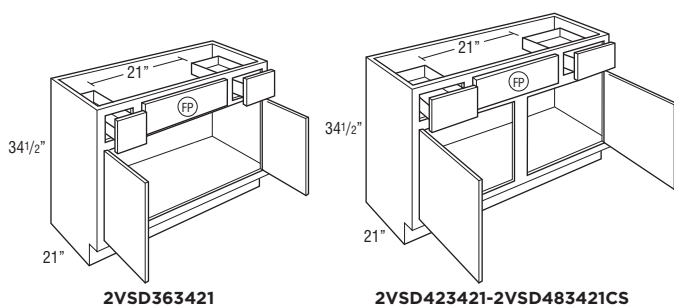
VANITY SINK DRAWER BASE

34 1/2" High

21" Deep

Model	Cubic Feet	1	2	3
2VSD363421	17.4	580	684	784
2VSD423421	20.3	631	743	854
2VSD483421CS	23.1	690	814	936

• Not available in Omni Admiral.



VANITY SINK DRAWER BASE

34 1/2" High

21" Deep

Model	Cubic Feet	1	2	3
3VSD303421	14.7	•	733	846
3VSD363421	17.5	•	854	980

- Top drawer is scoop drawer; 6 inches from top.
- Matching finished interior.
- 3VSD has open toekick. Toeboard can be used to cover if not desired.
- Door(s) are on the left and drawers are on the right; cannot be flipped.
- Not available in Omni Admiral.

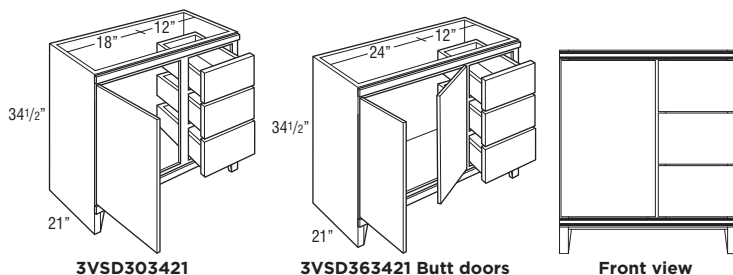


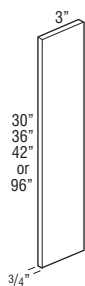
TABLE OF CONTENTS - FILLERS, SKINS, PANELS, & MOULDING

Fillers	77
Skins	79
Panels	81
Crown Moulding	84
Starter Moulding	86
Accent Moulding	86
Corner Moulding	88
Toeboard	89
Straight Valance / Baseboard	90

3" FILLER

Model	Cubic Feet	Price
F330	0.2	44
F336	0.2	49
F342	0.2	55
TF396FH	0.5	124

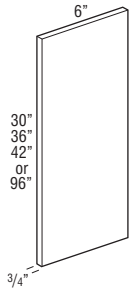
- 3/4" thick.
- Finished on front and two long edges (backs are not finished).
- F342, TF396FH not available in Omni Admiral.



6" FILLER

Model	Cubic Feet	Price
F630	0.2	82
F636	0.2	90
F642	0.2	102
TF696FH	0.5	197

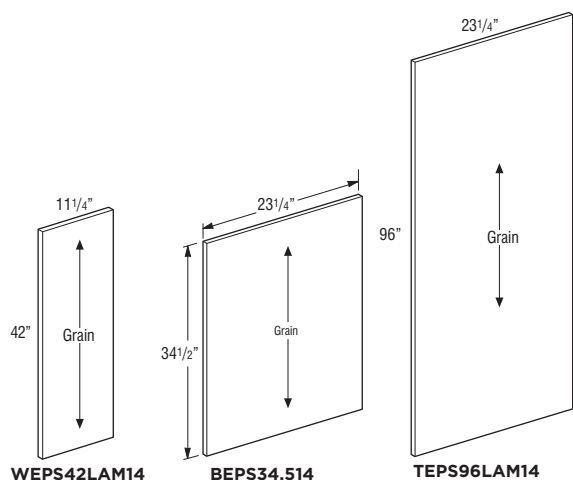
- 3/4" thick.
- Finished on front and two long edges (backs are not finished).
- Not available in Omni Admiral.



END PANEL SKINS

Model	Cubic Feet	Price
WEPS42LAM14	0.5	87
BEPS34.514	0.7	79
TEPS96LAM14	2.7	152

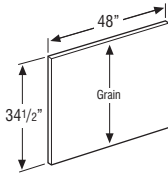
- 1/4" thick laminated furniture board.
- One side matching exterior and the other side Natural Maple laminate interior.
- Not available in Omni Admiral.



FINISHED BACK SKINS

Model	Cubic Feet	Price
BP4834.514	1.1	90

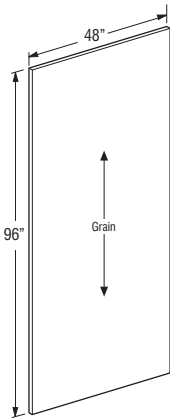
- 1/4" thick laminated furniture board.
- Grain runs with 34.5".
- One side matching exterior and the other side is unfinished.
- Not available in Omni Admiral.



FINISHED BACK SKINS

Model	Cubic Feet	Price
BP4896LAM14	2.7	197

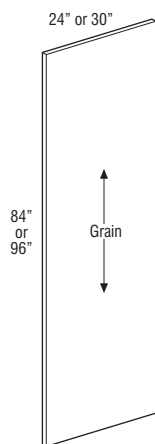
- 1/4" thick laminated furniture board.
- Grain runs with 96".
- One side matching exterior and the other side is unfinished.



TALL END PANEL

Model	Cubic Feet	Price
TEP2484LAM	1.3	216
TEP2496LAM	1.3	259
TEP3096LAM	1.3	324

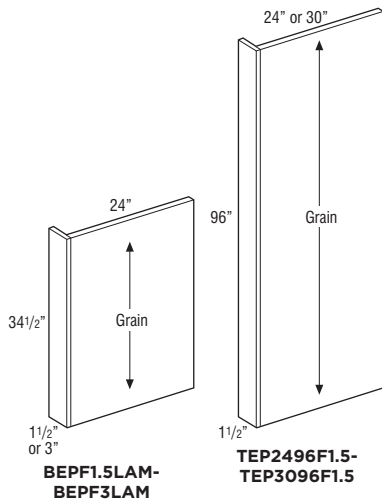
- 3/4" thick laminated furniture board.
- Panels are edgebanded on front edge.
- Matching exterior on both sides.
- Not available in Omni Admiral.



BASE AND TALL PANELS WITH FILLER ATTACHED

Model	Cubic Feet	Price
BEPF1.5LAM	1.7	116
BEPF3LAM	1.7	140
TEP2496F1.5	1.3	299
TEP3096F1.5	1.3	448

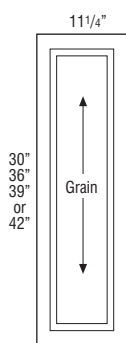
- 1/2" thick laminated furniture board.
- One side matching exterior and the other side Natural Maple laminate interior.
- BEPF1.5LAM, TEP3096F1.5 not available in Omni Admiral.



WALL END DECORATIVE DOOR PANEL KIT

Model	Cubic Feet	1	2	3
WED1230	0.8	•	153	177
WED1236	0.9	•	175	203
WED1239	1.0	•	188	216
WED1242	1.1	•	201	231

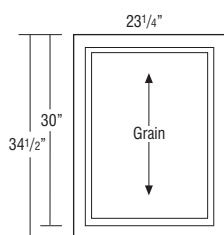
- Door panel kits include Wall End Panel Skin and doors with attachment screws for field installation.
- WED1239, WED1242 not available in Omni Admiral.



BASE END DECORATIVE DOOR PANEL KIT

Model	Cubic Feet	1	2	3
BEDSD	1.6	•	231	263

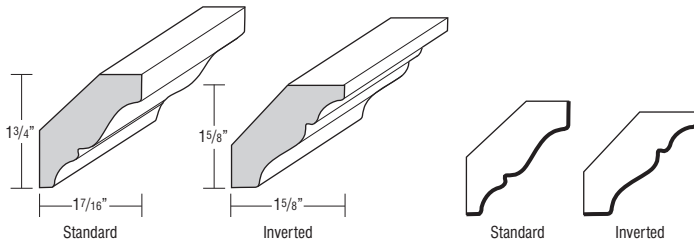
- Door panel kits include Base End Panel Skin and doors with attachment screws for field installation.



CROWN MOULDING, SOLID WOOD CROWN

Model	Cubic Feet	Price
SWCRM8	0.5	110

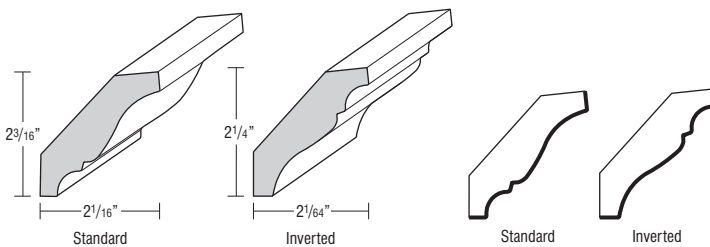
- Face mounts on Partial Overlay doors.
- May be face mounted on Full Overlay if used with a cleat.
- One 8' section.
- Moulding can be used as standard or inverted.
- Finished edges indicated by bold lines on side view drawings.



CROWN MOULDING, SOLID WOOD LARGE CROWN

Model	Cubic Feet	Price
SWLCRM8	0.5	142

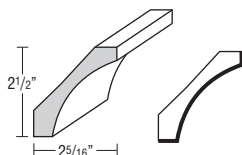
- Face mounts on Partial Overlay doors.
- May be face mounted on Full Overlay if used with a cleat.
- One 8' section.
- Moulding can be used as standard or inverted.
- Finished edges indicated by bold lines on side view drawings.
- Not available in Omni Admiral.



CROWN MOULDING, SMALL COVE CROWN

Model	Cubic Feet	Price
SMCOVECROWN8	1.0	179

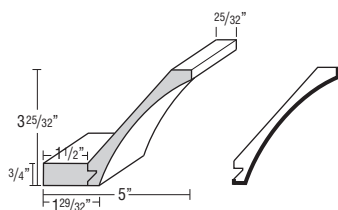
- One 8' section.
- Finished edges indicated by bold lines on side view drawings.



CROWN MOULDING, COVE CROWN

Model	Cubic Feet	Price
COVECROWN8	1.0	221

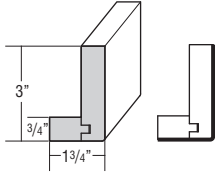
- One 8' section.
- Cleat shipped unattached can be used for top mount or face frame applications.
- Finished edges indicated by bold lines on side view drawings.
- Not available in Omni Admiral.



STARTER MOULDING, SHAKER

Model	Cubic Feet	Price
STRS8	1.0	345

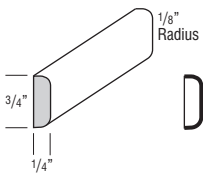
- One 8' section.
- Finished edges indicated by bold lines on side view drawings.



ACCENT MOULDING, FLAT SCRIBE

Model	Cubic Feet	Price
SM8	0.5	44

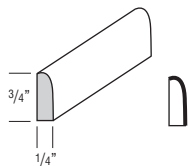
- One 8' section.
- Finished edges indicated by bold lines on side view drawings.



ACCENT MOULDING, SMALL SCRIBE

Model	Cubic Feet	Price
SSM8	0.5	44

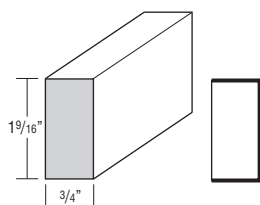
- One 8' section.
- Finished edges indicated by bold lines on side view drawings.



ACCENT MOULDING, LIGHT BAFFLE

Model	Cubic Feet	Price
LB2	0.5	79

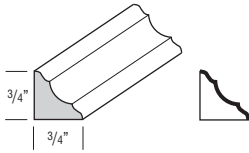
- One 8' section.
- Finished edges indicated by bold lines on side view drawings.



CORNER MOULDING, INSIDE CORNER

Model	Cubic Feet	Price
ICM8	0.5	63

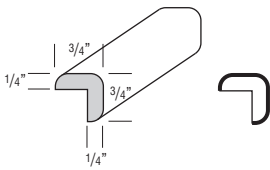
- One 8' section.
- Finished edges indicated by bold lines on side view drawings.
- Not available in Omni Admiral.



CORNER MOULDING, OUTSIDE CORNER

Model	Cubic Feet	Price
OCM8	0.5	63

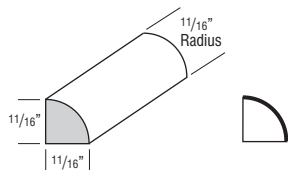
- One 8' section.



CORNER MOULDING, QUARTER ROUND

Model	Cubic Feet	Price
QRM	0.5	66

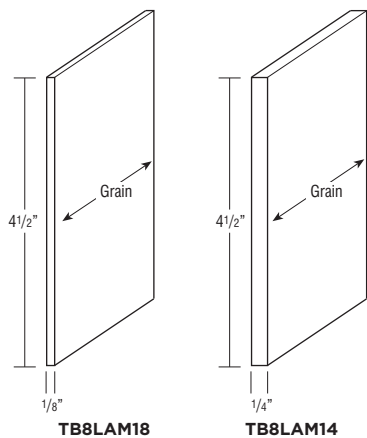
- One 8' section.
- Finished edges indicated by bold lines on side view drawings.



TOEBOARD

Model	Cubic Feet	Price
TB8LAM18	0.1	36
TB8LAM14	0.1	44

- One 8' section.
- TB8LAM18: 1/8" laminated furniture board.
- TB8LAM14: 1/4" laminated furniture board.
- TB8LAM18 not available in Omni Admiral.



STRAIGHT VALANCE / BASEBOARD

Model	Cubic Feet	Price
VV48	0.4	77
VV96	0.4	152

- Trimmable.
- Profiled bottom edge 3/4" thick.
- VV48 not available in Omni Admiral.

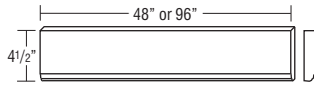


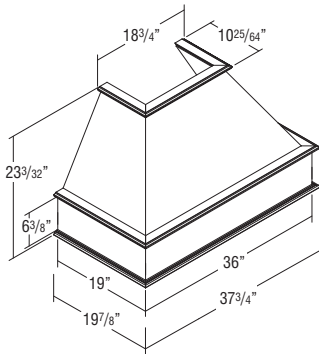
TABLE OF CONTENTS - ACCESSORIES

Classic Square Wood Hood92
 Classic Wood Hood Chimney92
 Wood Hood Blower93
 Roll Tray Kits94
 Tilt-out Trays95
 Stain, Paint, & Touch-up Tools96

CLASSIC SQUARE WOOD HOOD

Model	Cubic Feet	Price
WHS36 new	30.0	2458

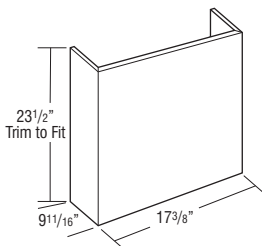
- Freestanding unit (must be properly secured to wall and cannot be attached to adjacent cabinets).
- Exhaust system not included. Compatible with BLOWER400.
- Compatible with Classic Wood Hood Chimney (WHC_ _), which can be trimmed. See below.
- Check your local building code for installation heights above the range.
- Silver metallic liner included. Assembly required.
- Installation instructions and hardware included.
- Liner opening size: 10 1/4" deep by 19 1/2" wide.
- Only available in White.



CLASSIC WOOD HOOD CHIMNEY

Model	Cubic Feet	Price
WHC36 new	4.1	463

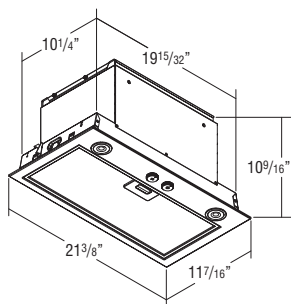
- 3/4" thick plywood.
- Trimmable.
- If trimmed, moulding is recommended to conceal any cut marks.
- Only available in White.



WOOD HOOD BLOWER, 400 CFM

Model	Cubic Feet	Price
BLOWER400 new	2.9	939

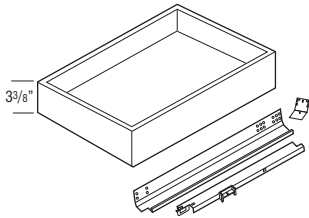
- 400 CFM, Energy Star rated.
- Two 2.8 watt (250+ Lumens) LED lights included.
- Installation instructions, warranty, and repair information included.
- Stainless Steel finish.
- Three speed rotary switch control.
- Includes removable dishwasher safe grease filter.
- Heat Sentry technology included.
- Sound rating is 7.0 sones on highest setting.
- Vertical ducting requires 7" diameter vent.
- 1 year warranty.



ROLL TRAY KITS

Model	Cubic Feet	Price
RT15WD	0.5	127
RT18WD	0.8	133
RT21WD	0.9	137
RT24WD	1.0	142
RT27WD	1.4	148
RT30WD	1.4	152
RT33WD	1.6	159
RT36WD	1.6	165
RT42WD	1.8	272

- 5/8" solid-wood dovetail roll tray with soft-closing, undermount, full extension guides.
- RT15WD-RT36WD kits contain 1 roll tray, roll tray brackets, hardware, and screws.
- RT42WD kits contain 2 roll trays, roll tray brackets, hardware, and screws.
- Exterior dimensions of roll trays are 21" deep x 3 3/8" tall (fits standard 24" deep cabinet).

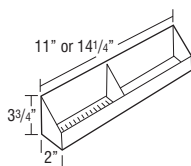


Width	Application
15"	B15, B15FH, B1532.5
18"	B18, B18FH, B1832.5, U18
21"	B21, B2132.5
24"	B24, B24FH, B2432.5, U24
27"	B27, B2732.5
30"	B30, B30FHB, B3032.5, U30
33"	B33, B3332.5
36"	B36, B36FH, B3632.5
42"	B42, B4232.5

TILT-OUT TRAYS

Model	Cubic Feet	Price
TOT15	0.1	82
TOT18	0.2	82

- TOT15: 11" w X 2" d X 3 3/4"
- TOT18: 14 1/4" w X 2" d X 3 3/4"
- Kit includes two white plastic trays and one pair of tilt-out hinges that attaches to the inside of the false panel.
- One tilt-out tray per false panel on cabinets less than 30" wide and greater than 36" wide, two tilt-out trays attached to one false panel on 30"-36" wide cabinets.



Cab Width	TOT Size	Cabinets
24"	TOT18	SB24, VSB2432.521, VSB243418, VSB243421
27"	TOT18	SB27, SB2732.5
30"	TOT15	SB30, VSB3032.521, VSB303421
33"	TOT15	SB33
36"	TOT18	SB36, VSB3632.521, VSB363421
42"	TOT18	SB42

STAIN & PAINT

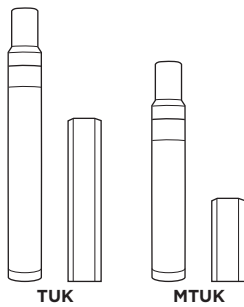
Model	Cubic Feet	Price
QUARTCOLOR	0.1	124
SSC	0.1	46
SSCCLEAR	0.1	46

- Wiping stain can be sprayed at low pressure.
- SSC is a 384 mL aerosol can available in Paint colors.
- SSCCLEAR is a 384 mL aerosol can in clear.

TOUCH-UP KIT

Model	Cubic Feet	Price
TUK	0.1	65
MTUK	0.1	39

- TUK includes touch-up marker and a fill stick.
- MTUK includes small touch-up marker and a small fill stick.



ESSENCE | ADVANTAGE

BY MASTERBRAND



**National Forest
Foundation**

Essence Advantage cabinets have a five year limited warranty. For terms & conditions and Cabinet Care and Cleaning Instructions, please visit wmsdist.com/essence-advantage/resources. Styles, product availability and construction may vary slightly from those shown due to material availability and/or design evolution. Specifications are subject to change without notice. Our customer service team is available if your design requires verification of product availability and specifications.