

Mantra East
Pricing & Specification
Effective February 12, 2024

Supersedes All Prior Versions

MANTRA™

Your MANTRA™ user experience is our priority. The MANTRA Pricing and Specification Guide features hyperlink navigation, so you can quickly locate product specific to your project.

- The Indexes contain links to each unique product.
- The main Table of Contents contains links to the beginning of each section.
- The secondary Table of Contents at the beginning of each section contains links to product subcategories.
- Return to the beginning of each section by clicking on the title inside the black tab.
- Return to the main Table of Contents at any time by clicking on MANTRA™ Cabinets at the bottom of each page.

If your preferred PDF search method is holding the Control and F keys and populating the search box with item codes or words, we've got you covered.

No matter how you choose to use this resource, we're glad you're specifying MANTRA!

TABLE OF CONTENTS

Index by Description2

Index by Code3

Customer Experience4

How To Order Mantra5

Door Styles6-8

Product Specifications9-16

Wall Cabinets17-41

Base Cabinets42-52

Universal Design Cabinets53-58

Tall Cabinets59-67

Vanity Cabinets68-73

Fillers74-76

Skins77-78

Panels79-81

Mouldings82-88

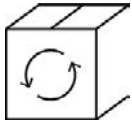
Accessories89-95

Description	Code	Page	Description	Code	Page
2 Drawer Base	2DB	45	Oven 3 Drawers	OC3D33__24	66
3 Drawer Base	3DB	46	Sink Base	SB	48
3" Filler	F3__ , TF396FH	75	Stain & Paint	QUARTCOLOR, SSC	95
6" Filler	F6__ , TF696FH	76	Starter Moulding, Shaker	STRS8	84
Accent Moulding, Flat Scribe	SM8	85	Straight Valance / Baseboard	VV__	88
Accent Moulding, Light Baffle	LB2	86	Super Lazy Susan	SLS36R	51
Accent Moulding, Small Scribe	SSM8	85	Tall End Panels	TEP2484LAM, TEP2496LAM, TEP3096LAM	79
Angled Corner Sink Front	ACSF	49	Tilt-out Trays	TOT__	93
Angled Corner Sink Front Bottom	ACSFB	49	Toeboard	TB8LAM18, TB8LAM14	88
Base and Tall Panels with Filler Attached	BEPF1.5LAM, BEPF3LAM, TEP2496F1.5, TEP3096F1.5	80	Touch-up Kit	TUK	95
Base Built-in Microwave with Drawer	BBMWD30	47	Universal Design, 3 Drawer Base	3DB__32.5	55
Base Corner Single Door	BC__S	50	Universal Design, Base Corner Single Door	BC__32.5S	57
Base Double Door	B	44	Universal Design, Base Double Door	B__32.5	55
Base Double Door - Full Height	B__FH	45	Universal Design, Base Built-in Microwave with Drawer	BBMWD3032.5	56
Base Easy Reach	BER__R	51	Universal Design, Base Single Door	B__32.5R	54
Base End Decorative Door Panel Kit	BEDSD	81	Universal Design, Base Sink Removable	BSR__32.5	56
Base Lazy Susan	BLS36R	52	Universal Design, Sink Base	SB__32.5	0
Base Single Door	B__R	43	Universal Design, Super Lazy Susan	SLS3632.5R	58
Base Single Door - Full Height	B__FHR	44	Universal Design, Vanity Base Sink Removable	VBSR__32.521	58
Base Wastebasket	BWB	47	Utility Double Door	U24__24	62
Classic Square Wood Hood	WHS36	90	Utility Double Door	U30__24	64
Classic Wood Hood Chimney	WHC36	90	Utility Single Door	U18__24R	60
Corner Moulding, Inside Corner	ICM8	86	Vanity Base Single Door	VB__3421R	71
Corner Moulding, Outside Corner	OCM8	87	Vanity Drawer Base	VDB__32.521	69
Corner Moulding, Quarter Round	QRM	87	Vanity Drawer Base	VDB__3421	72
Country Sink Base	CNTYSB	48	Vanity Sink Base	VS__32.521	70
Crown Moulding, Cove Crown	COVECROWN8	83	Vanity Sink Base	VS__3418	70
Crown Moulding, Large Shaker Crown	LSHAKER8	84	Vanity Sink Base	VS__3421	72
Crown Moulding, Small Cove Crown	SMCOVECROWN8	83	Vanity Sink Drawer Base	2VSD__3421	73
Crown Moulding, Solid Wood Crown	SWCRM8	82	Vanity Sink Drawer Base	3VSD__3421	73
Crown Moulding, Solid Wood Large Crown	SWLCRM8	82	Wall Corner Double Door	WC__ __S	37
Cutlery Insert Wood Organizer	CIW	94	Wall Corner Single Door	WC__ __S	36
Diagonal Wall	DW__ __ __ __R	39	Wall Cut-for-glass	WCG	30
Diagonal Wall Cut-for-glass	DWCG	40	Wall Double Door	W	19
End Panel Skins	WEPS42LAM14, BEPS34.514, TEPS96LAM14	77	Wall End Decorative Door Panel Kit	WED	81
Easy Reach Wall Corner	ER__	41	Wall Single Door	W__ __ __R	21
Finished Back Skins	BP4834.514, BP4896LAM14	78	Wood Hood Blower, 400 CFM	BLOWER400	91
Microwave Wall Cabinet	MW3018	90			
Mini Touch-up Kit	MTUK	95			
Roll Tray Kits	RT__WD	92			

Code	Description	Page	Code	Description	Page
2DB	2 Drawer Base	45	SB	Sink Base	48
2VSD__3421	Vanity Sink Drawer Base	73	SLS3632.5R	Universal Design, Super Lazy Susan	58
3DB	3 Drawer Base	46	SLS36R	Super Lazy Susan	51
3DB__32.5	Universal Design, 3 Drawer Base	55	SM8	Accent Moulding, Flat Scribe	85
3VSD__3421	Vanity Sink Drawer Base	73	SMCOVECROWN8	Crown Moulding, Small Cove Crown	83
ACSF	Angled Corner Sink Front	49	SSC	Stain & Paint	95
ACSF8	Angled Corner Sink Front Bottom	49	SSM8	Accent Moulding, Small Scribe	85
B	Base Double Door	44	STRS8	Starter Moulding, Shaker	84
B__32.5	Universal Design, Base Double Door	55	SWCRM8	Crown Moulding, Solid Wood Crown	82
B__32.5R	Universal Design, Base Single Door	54	SWLCRM8	Crown Moulding, Solid Wood Large Crown	82
B__FH	Base Double Door - Full Height	45	TB8LAM14	Toeboard	88
B__FHR	Base Single Door - Full Height	44	TB8LAM18	Toeboard	88
B__R	Base Single Door	43	TEP2484LAM	Tall End Panel	79
BC__32.5S	Universal Design, Base Corner Single Door	57	TEP2496F1.5	Tall Panel with Filler Attached	80
BC__S	Base Corner Single Door	50	TEP2496LAM	Tall End Panel	79
BBMWD30	Base Built-in Microwave with Drawer	47	TEP3096F1.5	Tall Panel with Filler Attached	80
BBMWD3032.5	Universal Design, Base Built-in Microwave with Drawer	56	TEP3096LAM	Tall End Panel	79
BEDSD	Base End Decorative Door Panel Kit	81	TEPS96LAM14	End Panel Skins	77
BEPF1.5LAM	Base Panel with Filler Attached	80	TF396FH	3" Filler, Tall	75
BEPF3LAM	Base Panel with Filler Attached	80	TF696FH	6" Filler, Tall	76
BEPS34.514	End Panel Skins	77	TOT__	Tilt-out Trays	93
BER__R	Base Easy Reach	51	TUK	Touch-up Kit	95
BLOWER400	Wood Hood Blower, 400 CFM	91	U18__24R	Utility Single Door	60
BLS36R	Base Lazy Susan	52	U24__24	Utility Double Door	62
BP4834.514	Finished Back Skins	78	U30__24	Utility Double Door	64
BP4896LAM14	Finished Back Skins	78	VB__3421R	Vanity Base Single Door	71
BSR__32.5	Universal Design, Base Sink Removable	56	VDB__32.521	Vanity Drawer Base	69
BWB	Base Wastebasket	47	VDB__3421	Vanity Drawer Base	71
CIW	Cutlery Insert Wood Organizer	94	VS8__32.521	Vanity Sink Base	70
CNTYSB	Country Sink Base	48	VS8__3418	Vanity Sink Base	70
COVECROWN8	Crown Moulding, Cove Crown	83	VS8__3421	Vanity Sink Base	72
DW_____R	Diagonal Wall	39	VBSR__32.521	Universal Design, Vanity Base Sink Removable	58
DWCG	Diagonal Wall Cut-for-glass	40	VV__	Straight Valance / Baseboard	88
ER__	Easy Reach Wall Corner	41	W	Wall Double Door	19
F3__	3" Filler	75	W_____R	Wall Single Door	21
F6__	6" Filler	76	WC_____S	Wall Corner Double Door	37
ICM8	Corner Moulding, Inside Corner	86	WC_____S	Wall Corner Single Door	36
LB2	Accent Moulding, Light Baffle	86	WCG	Wall Cut-for-glass	30
LSHAKER8	Crown Moulding, Large Shaker Crown	84	WED	Wall End Decorative Door Panel Kit	81
MTUK	Mini Touch-up Kit	95	WEPS42LAM14	End Panel Skins	77
MW3018	Microwave Wall Cabinet	35	WHC36	Classic Wood Hood Chimney	90
OC3D33__24	Oven 3 Drawers	66	WHS36	Classic Square Wood Hood	90
OCM8	Corner Moulding, Outside Corner	87			
GRM	Corner Moulding, Quarter Round	87			
QUARTCOLOR	Stain & Paint	95			
RT__WD	Roll Tray Kits	92			

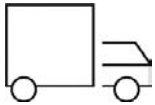
MANTRA™

CABINETS FAST



Cycle Ship

Orders are delivered based on a cycle ship calendar



Truckload

15 business day lead time delivered

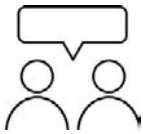
SERVICE MATTERS

As part of the MasterBrand family, we believe our industry leading service will set Mantra apart. This is our pledge to every partner.



Consistent Support

We will be there to help before, during and after the sale.



Personal Support

We will actually listen and work together to support your unique needs.



Proven Commitment

We will use our extensive knowledge and years of experience to help every partner success.

QUALITY ABOVE

We strive to deliver beyond your expectations. That's why popular features like all-plywood construction and soft-close come standard with every Mantra cabinet. Say goodbye to the hassle of upgrades and added costs for your customers.

MANTRA order

All orders will be placed electronically using MB1touch / Mantra Order:

- Electronic entry and order management
- 2020 Design direct order upload

Mantra Order is an easy-to-navigate order management system that enables users to enter, review, edit, copy, and submit orders intuitively.

Electronic orders are picked eight times daily, Monday through Friday (excluding holidays):

- 6:00, 7:30, 8:30, 9:30, and 10:30 AM EST
- 1:00, 2:30, and 3:30 PM EST

★ Order Acknowledgement will be sent the day after order receipt

★ Delivery notification will be sent to dealer once load is assigned

★ Shipments will be delivered Monday through Friday between the hours of 7:00 AM and 4:00 PM local time

Cycle Ship delivery is available in select locations.

- Mantra Cycle Ship cut off is 10:30 AM EST
- See Mantra Cycle Ship schedule on MB1touch

Truckload orders ship in 10-15 business days.

Service Policies are posted on MB1touch.



CLASSIC

Partial Overlay • Shaker • 2 1/4" Rail • Slab drawer front



Bark



Snow



OMNI

Full Overlay • Shaker • 2 1/4" Rail • 5-piece drawer front



Admiral



Beachwood



Graphite



Mineral



Snow



SPECTRA

Full Overlay • Transitional • 3" Rail • 5-piece drawer front

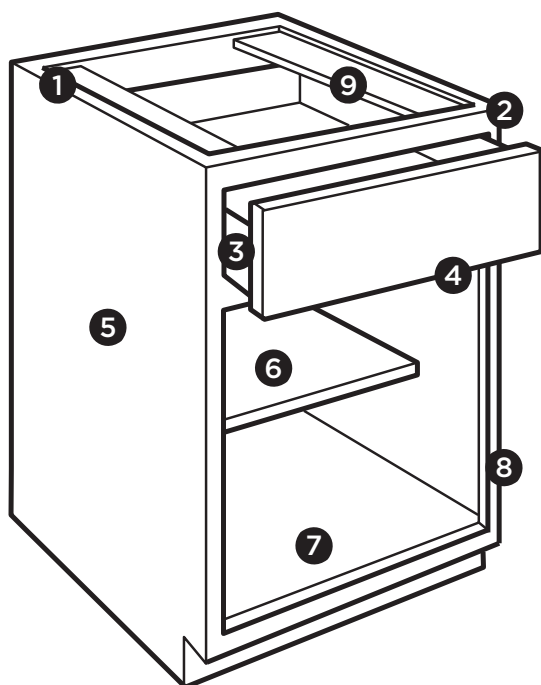


Mineral



Snow

PRODUCT SPECIFICATIONS



- 1 1/2" Plywood ends, 3/8" top, back, and bottom
- 2 3/4" Hardwood frame, doors and drawer fronts
- 3 5/8" Solid wood dovetail drawer box
- 4 Soft-closing, undermount, full extension drawer guides
- 5 Matching exterior
- 6 3/4" Natural Plywood adjustable shelves
- 7 Natural interior
- 8 Soft-closing, 6-way adjustable hinges
- 9 3/8" Plywood I-beam braces

Cabinet Care and Cleaning Instructions:

<https://masterbrandcabinets.com/care-and-cleaning>

Warranty Information:

<https://mantracabinets.com>










Installation Instructions:

<https://masterbrand.widen.net/s/zvnltkbxh2/mantra-installation-instruction-summary>

Miscellaneous Parts Guide:

<https://masterbrand.widen.net/s/9djdqz6j8f/mantra-miscellaneous-parts-list---d00485>

PRICE AND STYLE CODE INFORMATION

	Price Group 1		Price Group 2					Price Group 3	
	Classic Stain	Classic Paint	Omni Paint	Omni Paint	Omni Paint	Omni Stain	Omni Paint	Spectra Paint	Spectra Paint
	Bark	Snow	Snow	Mineral	Graphite	Beachwood	Admiral	Snow	Mineral
									
Style Code	320	321	323	327	328	329	330	325	326
Common Style Code -Items with stain/paint price (Ex. Moulding)	310	311	311	312	313	314	315	311	312
Miscellaneous Code -Items with one price (Ex. Roll Trays)	300	300	300	300	300	300	300	300	300

OMNI ADMIRAL PRODUCT OFFERING

Base

B12R

B15R

B18R

B21R

B24

B27

B30

B33

B36

B9FHR

3DB15

3DB18

3DB21

3DB24

3DB30

3DB36

BBMWD30

BWB18

SB30

SB33

SB36

CNTYSB36

BC42S

BER36R

SLS36R

Wall

W1830R

W2130R

W2430

W2730

W3015 new

W3018 new

W3030

W3630

W1836R

W2136R

W2736

W3036

W3636

W361824

DW302424R

Tall

U188424R

U189024R

Vanity

VSB243421

VSB303421

VSB363421

Accessories

QUARTCOLOR

SSC

TUK

MTUK

Fillers, Skins, Panels and Moulding

F330

F336

BP4896LAM14

BEPF3LAM

TEP2496F1.5

WED1230

WED1236

BEDSD

SWCRM8

SMCOVECROWN8

STRS8

SM8

SSM8

LB2

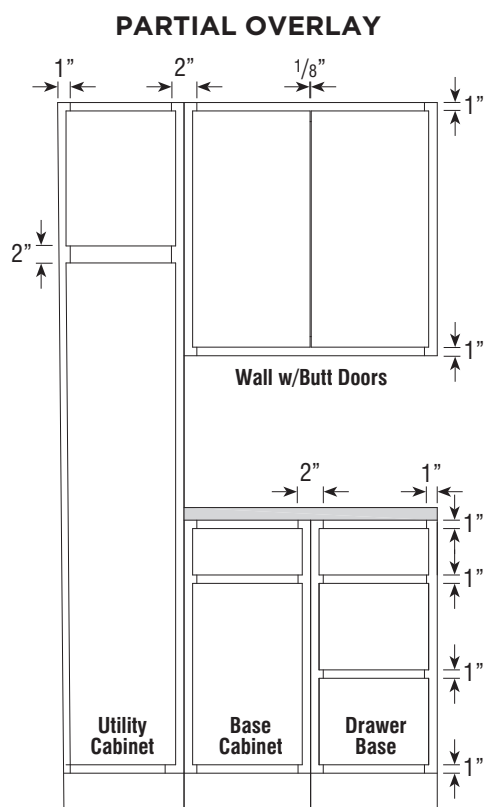
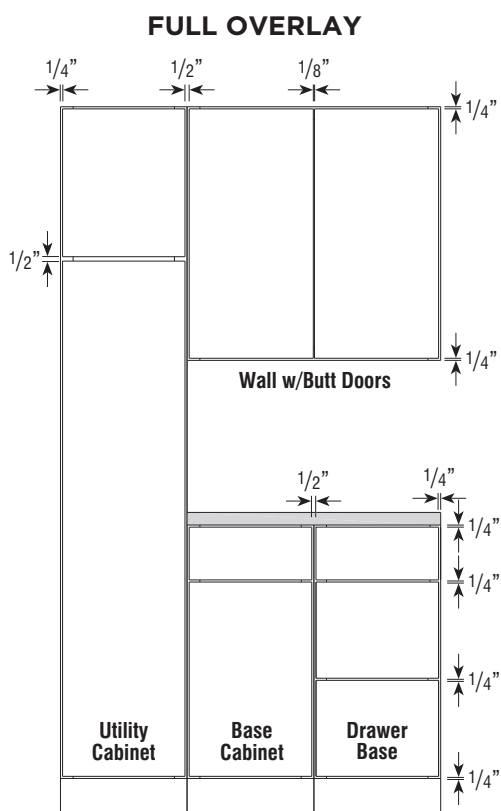
OCM8

QRM

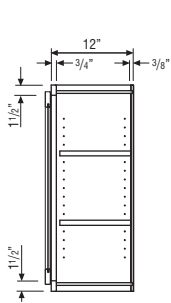
TB8LAM14

VV96

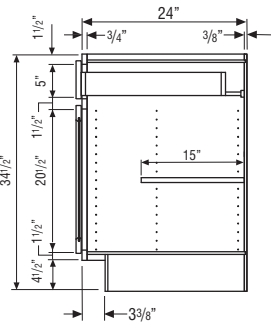
FULL AND PARTIAL OVERLAY SPECIFICATIONS



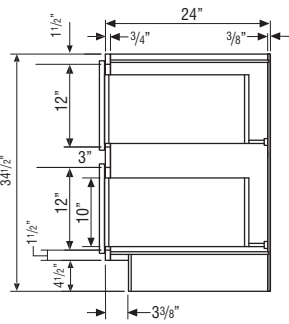
CABINET DIMENSIONS



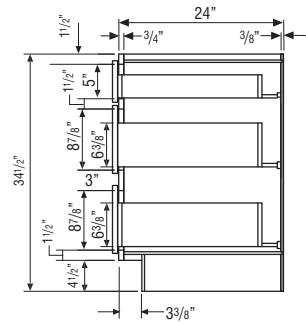
WALL CABINET



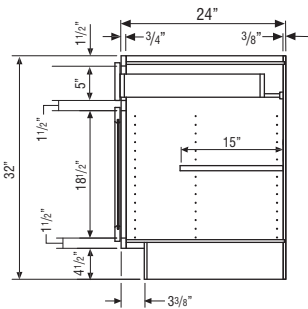
BASE CABINET



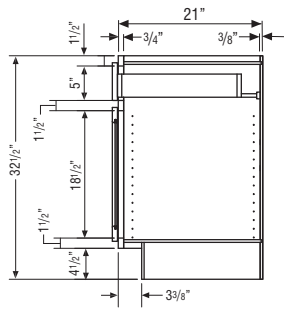
**TWO-DRAWER
BASE CABINET**



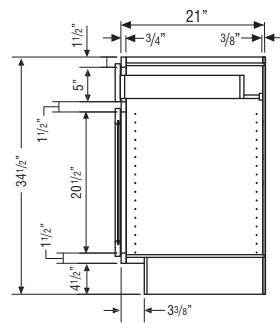
**THREE-DRAWER
BASE CABINET**



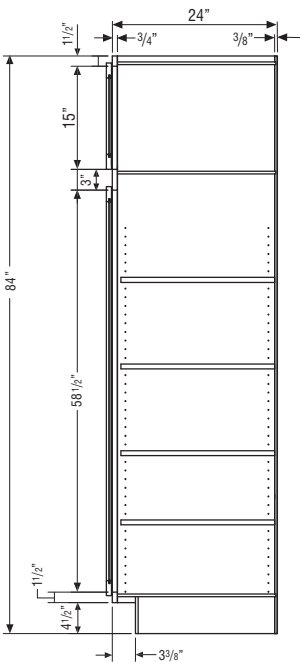
**32 1/2" HIGH
BASE CABINET**



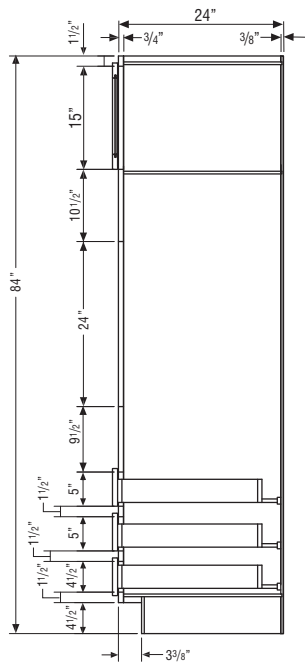
**32 1/2" HIGH
VANITY CABINET**



**34 1/2" HIGH
VANITY CABINET**



UTILITY CABINET

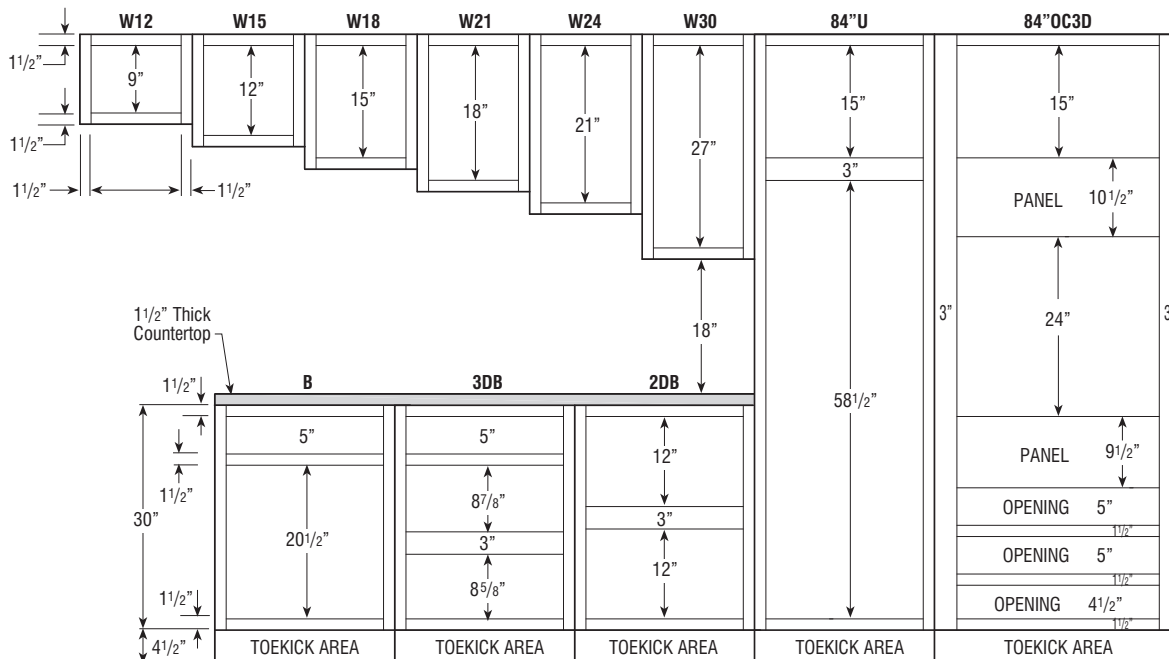


OC3D CABINET

CABINET DIMENSIONS

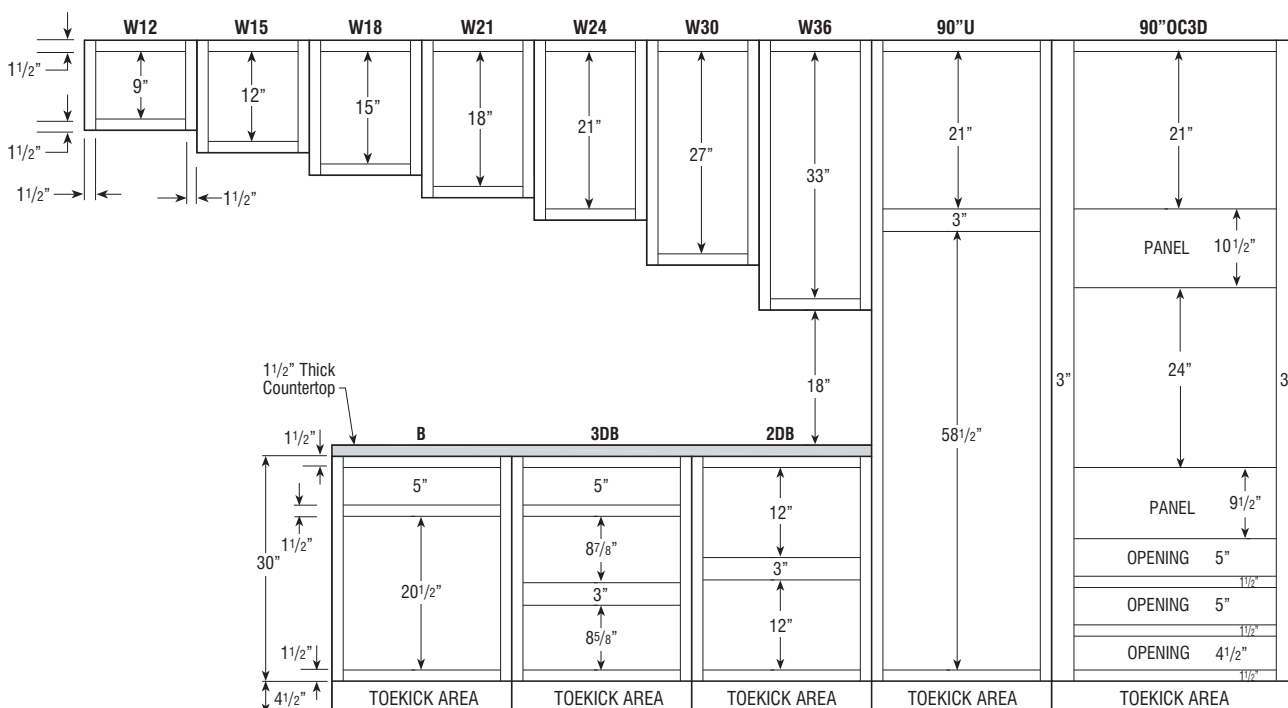
84" HIGH APPLICATION

Number after Wall Cabinet Represents Height of Cabinet



90" HIGH APPLICATION

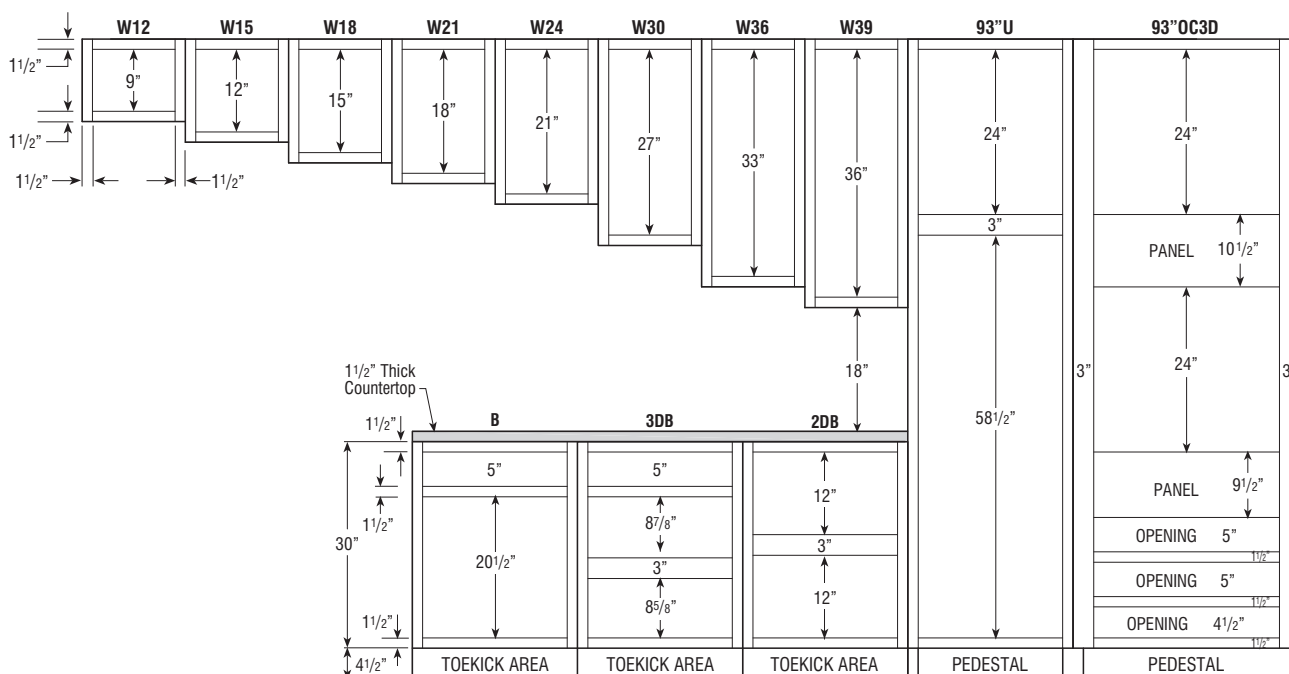
Number after Wall Cabinet Represents Height of Cabinet



CABINET DIMENSIONS

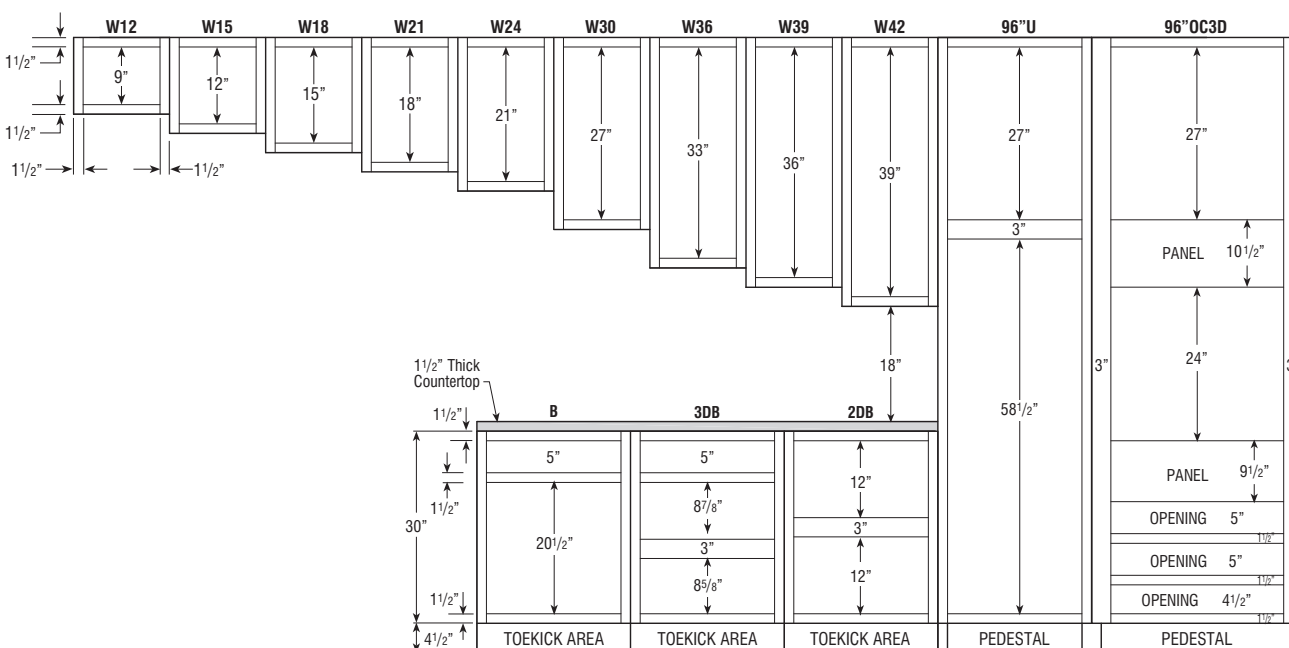
93" HIGH APPLICATION

Number after Wall Cabinet Represents Height of Cabinet



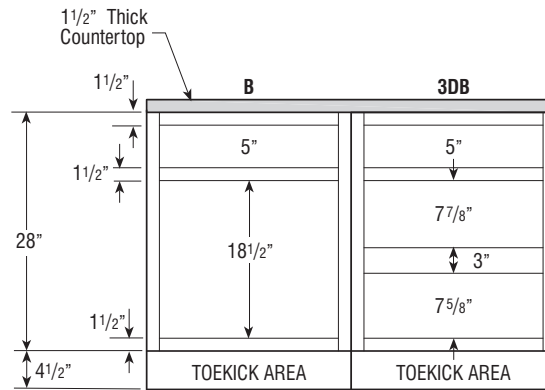
96" HIGH APPLICATION

Number after Wall Cabinet Represents Height of Cabinet

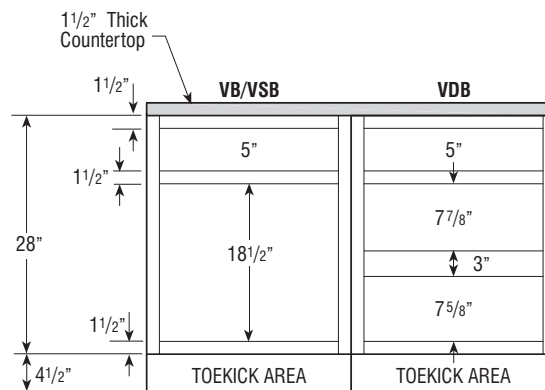


CABINET DIMENSIONS

32 1/2" HIGH BASE CABINETS



32 1/2" HIGH VANITY CABINETS



34 1/2" HIGH VANITY CABINETS

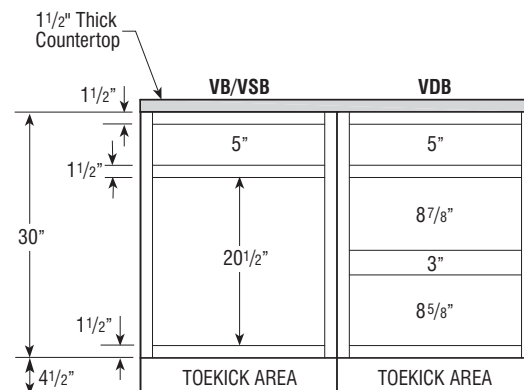


TABLE OF CONTENTS - WALL CABINETS

**12" Deep Wall**

12" High	19
15" High	19
18" High	20
21" High	20
24" High	21
30" High	22
36" High	24
39" High	26
42" High	28

12" Deep Wall Cut-for-glass

30" High	30
36" High	31
42" High	32

24" Deep Wall

12" High	33
18" High	34
21" High	34
24" High	35

24" Deep Microwave Wall Cabinet

18" High	35
----------------	----

12" Deep Wall Corner

30" High	36
36" High	37
39" High	38
42" High	38

12" Deep Diagonal Wall

30" High	39
36" High	39
39" High	39
42" High	39

12" Deep Diagonal Wall Cut-for-glass

30" High	40
36" High	40
42" High	40

12" Deep Easy Reach Wall Corner

30" High	41
36" High	41

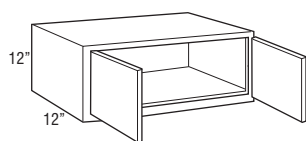
WALL DOUBLE DOOR

12" High

12" Deep

Model	Cubic Feet	1	2	3
W3012	3.4	216	256	295
W3312	3.7	248	293	336
W3612	4.0	287	339	391

• Not available in Omni Admiral.



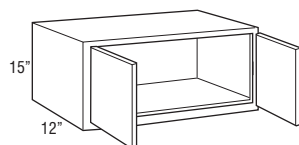
WALL DOUBLE DOOR

15" High

12" Deep

Model	Cubic Feet	1	2	3
W2415	3.2	285	336	386
W3015	3.9	259	306	349
W3315	4.2	282	333	386
W3615	4.6	309	363	418

• W2415, W3315, and W3615 not available in Omni Admiral.
 • W2415 not available in Classic Bark.



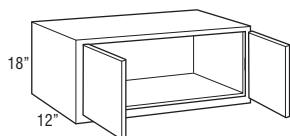
WALL DOUBLE DOOR

18" High

12" Deep

Model	Cubic Feet	1	2	3
W2418	3.8	293	343	397
W3018	4.9	309	363	418
W3318	5.3	324	380	438
W3618	5.8	331	388	445

- W2418, W3318, and W3618 not available in Omni Admiral.
- W2418 not available in Classic Bark.



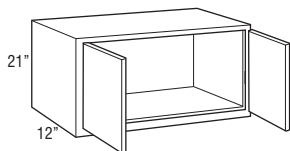
WALL DOUBLE DOOR

21" High

12" Deep

Model	Cubic Feet	1	2	3
W3021 new	6.7	327	384	443
W3621 new	8.0	359	420	482

- Not available in Classic Bark, Omni Admiral, and Spectra Mineral.



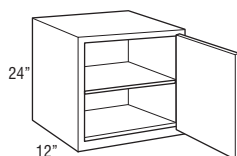
WALL SINGLE DOOR

24" High

12" Deep

Model	Cubic Feet	1	2	3
W2124R	4.6	287	339	391

- Cabinet hinged on the right; may be flipped for left hinge application.
- Not available in Omni Admiral.



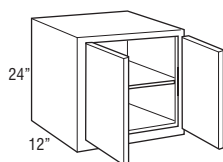
WALL DOUBLE DOOR

24" High

12" Deep

Model	Cubic Feet	1	2	3
W2424	5.2	312	366	422
W3024	6.4	345	404	468
W3324	7.0	369	435	499
W3624	7.6	386	452	518

- Not available in Omni Admiral.



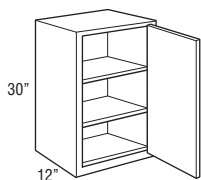
WALL SINGLE DOOR

30" High

12" Deep

Model	Cubic Feet	1	2	3
W930R	2.6	244	282	324
W1230R	3.4	248	295	339
W1530R	4.1	262	312	363
W1830R	4.9	285	336	388
W2130R	5.6	309	363	418

- Cabinet hinged on the right; may be flipped for left hinge application.
- W930R, W1230R, W1530R not available in Omni Admiral.



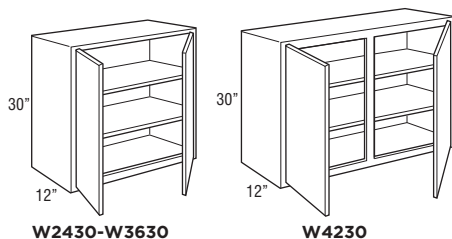
WALL DOUBLE DOOR

30" High

12" Deep

Model	Cubic Feet	1	2	3
W2430	6.4	336	397	452
W2730	7.2	372	438	508
W3030	7.9	388	455	520
W3330	8.7	427	503	575
W3630	9.4	442	518	595
W4230	11.0	484	571	657

• W3330 and W4230 not available in Omni Admiral.



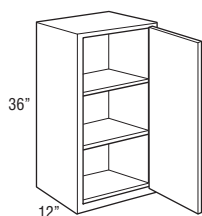
WALL SINGLE DOOR

36" High

12" Deep

Model	Cubic Feet	1	2	3
W936R	3.1	279	324	376
W1236R	4.0	293	341	397
W1536R	4.9	303	360	409
W1836R	5.8	331	388	445
W2136R	6.7	360	422	484

- Cabinet hinged on the right; may be flipped for left hinge application.
- W936R, W1236R, W1536R not available in Omni Admiral.



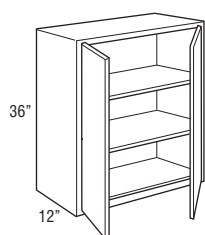
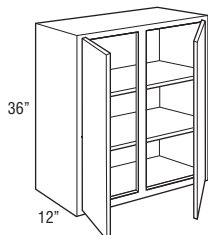
WALL DOUBLE DOOR

36" High

12" Deep

Model	Cubic Feet	1	2	3
W2436	7.6	391	461	532
W2736	8.5	432	508	584
W3036	9.4	448	529	610
W3336	10.3	499	584	666
W3636	11.2	515	600	693
W4236	13.1	575	674	777

• W2436R, W3336, W4236 not available in Omni Admiral.

**W2436-W3636****W4236**

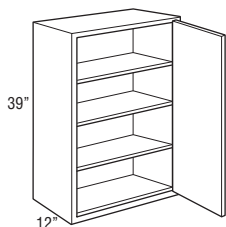
WALL SINGLE DOOR

39" High

12" Deep

Model	Cubic Feet	1	2	3
W939R	3.3	293	334	386
W1239R	4.3	307	352	404
W1539R	5.3	324	371	425
W1839R	6.3	349	400	461
W2139R	7.3	379	435	502

- Cabinet hinged on the right; may be flipped for left hinge application.
- Not available in Classic Bark and Omni Admiral.



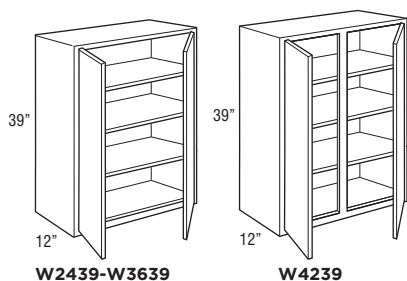
WALL DOUBLE DOOR

39" High

12" Deep

Model	Cubic Feet	1	2	3
W2439	8.2	411	471	542
W2739	9.2	454	521	599
W3039	10.2	474	544	626
W3339	11.2	525	600	689
W3639	12.1	540	618	710
W4239	14.1	602	693	798

• Not available in Classic Bark and Omni Admiral.



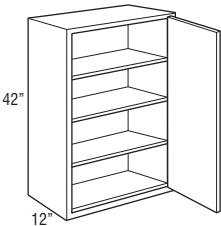
WALL SINGLE DOOR

42" High

12" Deep

Model	Cubic Feet	1	2	3
W942R	3.6	315	369	425
W1242R	4.6	331	388	445
W1542R	5.7	353	411	475
W1842R	6.7	376	442	513
W2142R	7.8	409	482	553

- Cabinet hinged on the right; may be flipped for left hinge application.
- Not available in Omni Admiral.



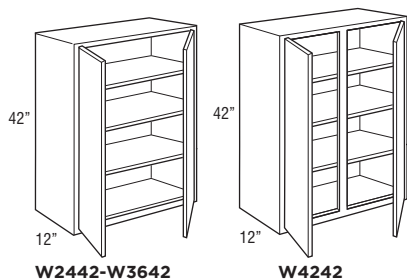
WALL DOUBLE DOOR

42" High

12" Deep

Model	Cubic Feet	1	2	3
W2442	8.8	442	518	595
W2742	9.9	487	575	660
W3042	11.0	515	600	693
W3342	12.0	566	662	764
W3642	13.1	580	684	784
W4242	15.2	647	764	881

• Not available in Omni Admiral.



WALL CUT-FOR-GLASS CABINETS

RECOMMENDED GLASS SIZE FOR WALL CABINET DOORS			
SKU	Omni Door Size	Door Route Size	Glass Size
WCG1530R	14 1/2" x 29 1/2"	11 1/4" x 26 1/4"	11 1/16" x 26 1/16"
WCG1830R	17 1/2" x 29 1/2"	14 1/4" x 26 1/4"	14 1/16" x 26 1/16"
WCG3030	14 11/16" x 29 1/2"	11 7/16" x 26 1/4"	11 1/4" x 26 1/16"
WCG3630	17 11/16" x 29 1/2"	14 7/16" x 26 1/4"	14 1/4" x 26 1/16"
WCG1536R	14 1/2" x 35 1/2"	11 1/4" x 32 1/4"	11 1/16" x 32 1/16"
WCG1836R	17 1/2" x 35 1/2"	14 1/4" x 32 1/4"	14 1/16" x 32 1/16"
WCG3036	14 11/16" x 35 1/2"	11 7/16" x 32 1/4"	11 1/4" x 32 1/16"
WCG3636	17 11/16" x 35 1/2"	14 7/16" x 32 1/4"	14 1/4" x 32 1/16"
WCG1542R	14 1/2" x 41 1/2"	11 1/4" x 38 1/4"	11 1/16" x 38 1/16"
WCG1842R	17 1/2" x 41 1/2"	14 1/4" x 38 1/4"	14 1/16" x 38 1/16"
WCG3042	14 11/16" x 41 1/2"	11 7/16" x 38 1/4"	11 1/4" x 38 1/16"
WCG3642	17 11/16" x 41 1/2"	14 7/16" x 38 1/4"	14 1/4" x 38 1/16"

*Recommended glass size dimensions are 3/16" smaller than glass route.

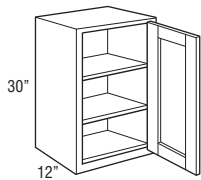
WALL CUT-FOR-GLASS

30" High

12" Deep

Model	Cubic Feet	1	2	3
WCG1530R	4.1	•	351	•
WCG1830R	4.9	•	373	•

- Cabinet hinged on the right; may be flipped for left hinge application.
- Glass clips included with door; glass not included.
- Cabinets will have matching interior.
- Not available in Omni Admiral.



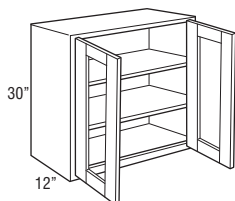
WALL CUT-FOR-GLASS

30" High

12" Deep

Model	Cubic Feet	1	2	3
WCG3030	7.9	•	539	•
WCG3630	9.4	•	599	•

- Glass clips included with door; glass not included.
- Cabinets will have matching interior.
- Not available in Omni Admiral.



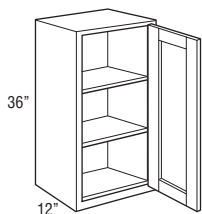
WALL CUT-FOR-GLASS

36" High

12" Deep

Model	Cubic Feet	1	2	3
WCG1536R	4.9	•	397	•
WCG1836R	5.8	•	425	•

- Cabinet hinged on the right; may be flipped for left hinge application.
- Glass clips included with door; glass not included.
- Cabinets will have matching interior.
- Not available in Omni Admiral.



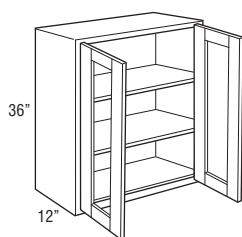
WALL CUT-FOR-GLASS

36" High

12" Deep

Model	Cubic Feet	1	2	3
WCG3036	9.4	•	610	•
WCG3636	11.2	•	678	•

- Glass clips included with door; glass not included.
- Cabinets will have matching interior.
- Not available in Omni Admiral.



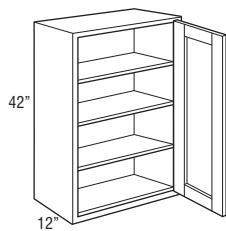
WALL CUT-FOR-GLASS

42" High

12" Deep

Model	Cubic Feet	1	2	3
WCG1542R	5.7	•	445	•
WCG1842R	6.7	•	475	•

- Cabinet hinged on the right; may be flipped for left hinge application.
- Glass clips included with door; glass not included.
- Cabinets will have matching interior.
- Not available in Omni Admiral.



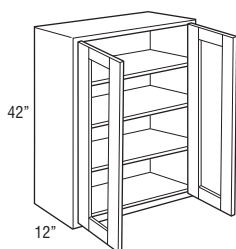
WALL CUT-FOR-GLASS

42" High

12" Deep

Model	Cubic Feet	1	2	3
WCG3042	11.0	•	678	•
WCG3642	13.0	•	760	•

- Glass clips included with door; glass not included.
- Cabinets will have matching interior.
- Not available in Omni Admiral.



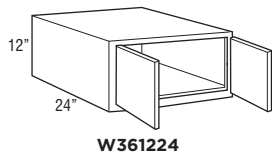
WALL DOUBLE DOOR

12" High

24" Deep

Model	Cubic Feet	1	2	3
W361224	7.4	349	409	473

- 24" deep cabinets must be supported on three surfaces when mounted.
- Load limit is 15 lbs. per square foot of load bearing surface.
- Not available in Omni Admiral.



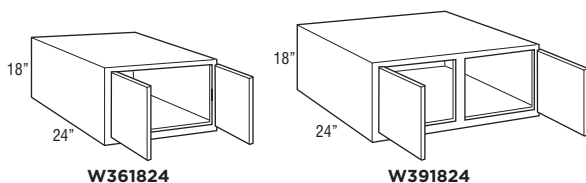
WALL DOUBLE DOOR

18" High

24" Deep

Model	Cubic Feet	1	2	3
W361824	10.7	378	445	515
W391824	11.5	397	465	534

- 24" deep cabinets must be supported on three surfaces when mounted.
- Load limit is 15 lbs. per square foot of load bearing surface.
- W391824 not available in Omni Admiral.



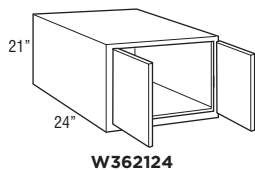
WALL DOUBLE DOOR

21" High

24" Deep

Model	Cubic Feet	1	2	3
W362124 new	13.5	405	477	550

- 24" deep cabinets must be supported on three surfaces when mounted.
- Load limit is 15 lbs. per square foot of load bearing surface.
- Not available in Classic Bark, Omni Admiral, and Spectra Mineral.



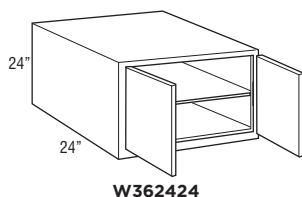
WALL DOUBLE DOOR

24" High

24" Deep

Model	Cubic Feet	1	2	3
W362424	14.0	432	508	584

- 24" deep cabinets must be supported on three surfaces when mounted.
- Load limit is 15 lbs. per square foot of load bearing surface.
- Not available in Omni Admiral.



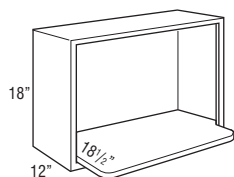
MICROWAVE WALL CABINET

18" High

24" Deep

Model	Cubic Feet	1	2	3
MW3018	4.9	400	400	400

- Includes one 3/4" shelf with six mounting screws. Microwave shelf extends beyond the front of the cabinet by 6 1/2", for a total shelf depth of 18 1/2".
- Microwave cabinet must be attached to wall stud and adjacent cabinets on both sides for support.
- Finished matching interior.

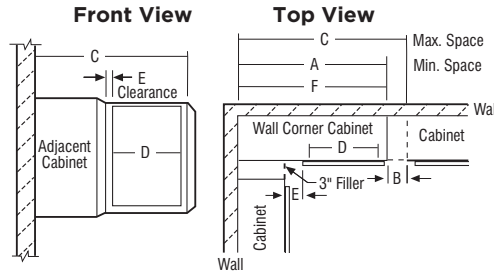


Model	Opening Width	Opening Height
MW3018	27"	14 1/2"

WALL CORNER CABINETS

SKU	A Min. Space	B Max. Pull	C Max. Space	D Cabinet Opening	E Full Overlay		E Partial Overlay		F Actual Cabinet
WC30...	30"	5"	35"	13 1/2"	At Min.	At Max.	At Min.	At Max.	30"
WC36...	36"	5"	41"	19 1/2"	1 3/4"	6 3/4"	2 1/2"	7 1/2"	36"
WC42...	42"	4 1/2"	46 1/2"	24"	3 1/4"	7 3/4"	4"	8 1/2"	42"

- Wall corner cabinets may be installed flush to the wall (left) or pulled 3" away from wall (right) to accommodate add dimensions in a kitchen design. In either case, the adjoining run of 12" wall cabinets plus a 3" filler will butt against the solid-wood panel.
- When a cabinet is "pulled" it will use proportionally more space, for example, a 30" wide WC, pulled 2" will use 32" of space.
- Blind side of wall corner cabinets cannot be installed next to a range hood unit due to door interference.



NOTE:

All outside stiles are 1 1/2" wide

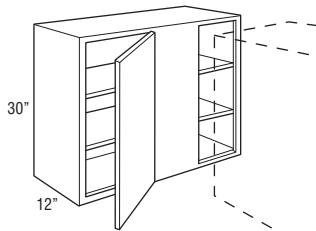
WALL CORNER SINGLE DOOR

30" High

12" Deep

Model	Cubic Feet	1	2	3
WC3030S	7.9	336	397	452
WC3630S	9.4	372	438	503

- Right blind shown; cabinet may be flipped for left blind application.
- Filler required for installation. Must be ordered separately.
- Not available in Omni Admiral.



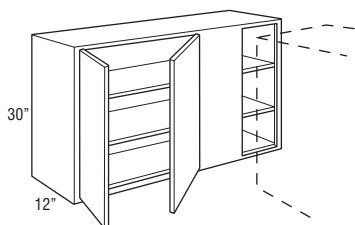
WALL CORNER DOUBLE DOOR

30" High

12" Deep

Model	Cubic Feet	1	2	3
WC4230S	11.0	432	508	584

- Right blind shown; cabinet may be flipped for left blind application.
- Filler required for installation. Must be ordered separately.
- Not available in Omni Admiral.



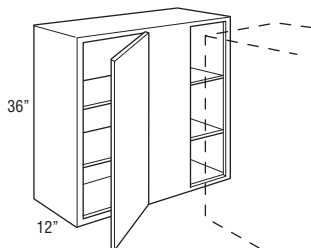
WALL CORNER SINGLE DOOR

36" High

12" Deep

Model	Cubic Feet	1	2	3
WC3036S	9.4	404	478	551
WC3636S	11.2	442	518	595

- Right blind shown; cabinet may be flipped for left blind application.
- Filler required for installation. Must be ordered separately.
- Not available in Omni Admiral.



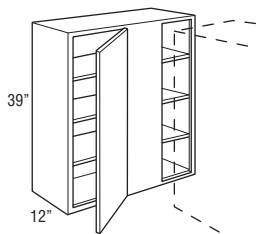
WALL CORNER SINGLE DOOR

39" High

12" Deep

Model	Cubic Feet	1	2	3
WC3039S	10.2	432	496	574
WC3639S	12.1	475	541	620

- Right blind shown; cabinet may be flipped for left blind application.
- Filler required for installation. Must be ordered separately.
- Not available in Classic Bark and Omni Admiral.



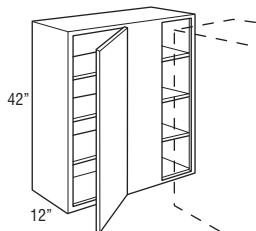
WALL CORNER SINGLE DOOR

42" High

12" Deep

Model	Cubic Feet	1	2	3
WC3042S	11.0	455	534	618
WC3642S	13.1	499	584	666

- Right blind shown; cabinet may be flipped for left blind application.
- Filler required for installation. Must be ordered separately.
- Not available in Omni Admiral.



DIAGONAL WALL

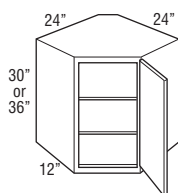
30" High

36" High

12" Deep

Model	Cubic Feet	1	2	3
DW302424R	10.8	388	455	520
DW362424R	12.9	465	551	631

- Cabinet hinged on the right; may be flipped for left hinge application.
- Cabinets require 24" x 24" of corner wall space.
- DW362424R not available in Omni Admiral.



DIAGONAL WALL

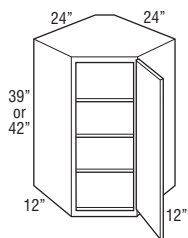
39" High

42" High

12" Deep

Model	Cubic Feet	1	2	3
DW392424R	13.9	534	633	725
DW422424R	14.9	561	660	761

- Cabinet hinged on the right; may be flipped for left hinge application.
- Cabinets require 24" x 24" of corner wall space.
- Not available in Omni Admiral.
- DW392424R also not available in Classic Bark.



DIAGONAL WALL CUT-FOR-GLASS CABINETS

RECOMMENDED GLASS SIZE FOR WALL CABINET DOORS			
SKU	Omni Door Size	Door Route Size	Glass Size
DWCG302424R	14 1/2" x 29 1/2"	11 1/4" x 26 1/4"	11 1/16" x 26 1/16"
DWCG362424R	14 1/2" x 35 1/2"	11 1/4" x 32 1/4"	11 1/16" x 32 1/16"
DWCG422424R	14 1/2" x 41 1/2"	11 1/4" x 38 1/4"	11 1/16" x 38 1/16"

*Recommended glass size dimensions are 3/16" smaller than glass route.

DIAGONAL WALL CUT-FOR-GLASS

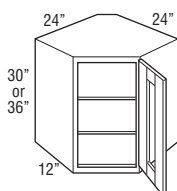
30" High

36" High

12" Deep

Model	Cubic Feet	1	2	3
DWCG302424R	10.8	•	539	•
DWCG362424R	12.9	•	631	•

- Cabinet hinged on the right; may be flipped for left hinge application.
- Cabinets require 24" x 24" of corner wall space.
- Glass clips included with door; glass not included.
- Cabinets will have matching interior.
- Not available in Omni Admiral.



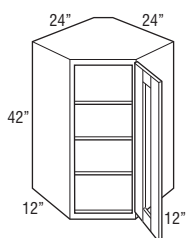
DIAGONAL WALL CUT-FOR-GLASS

42" High

12" Deep

Model	Cubic Feet	1	2	3
DWCG422424R	14.9	•	737	•

- Cabinet hinged on the right; may be flipped for left hinge application.
- Cabinets require 24" x 24" of corner wall space.
- Glass clips included with door; glass not included.
- Cabinets will have matching interior.
- Not available in Omni Admiral.



EASY REACH WALL CORNER

30" High

36" High

12" Deep

Model	Cubic Feet	1	2	3
ER30R	12.3	493	578	661
ER36R	14.6	592	700	803

- Requires 24" x 24" of corner wall space.
- Adjustable shelves.
- Cabinet hinged on the right; may be flipped for left hinge application.
- Hinged door opens 170°.
- Integrated soft-close hinge not included.
- Not available in Omni Admiral.

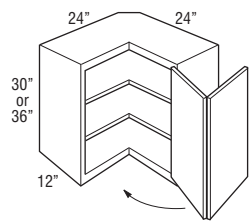


TABLE OF CONTENTS – BASE CABINETS



34 1/2” High, 24” Deep

Base with Drawer43

Full Height Base44

Drawer Base45

Base Built-in Microwave Cabinet with Drawer47

Base Wastebasket47

Sink Base48

Base Corner50

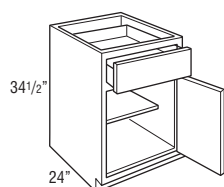
BASE SINGLE DOOR

34½" High

24" Deep

Model	Cubic Feet	1	2	3
B9R	5.4	287	339	391
B12R	7.1	312	366	422
B15R	8.7	336	397	452
B18R	10.3	363	427	491
B21R	11.7	391	461	532

- Cabinet hinged on the right; door may be flipped for left hinge application.
- Roll tray kits available for 15"-21" widths.
- B9R not available in Omni Admiral.



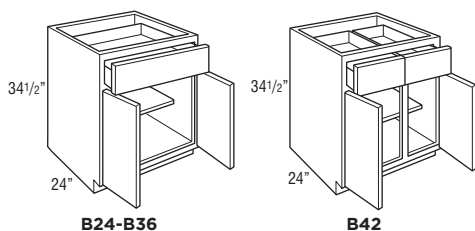
BASE DOUBLE DOOR

34½" High

24" Deep

Model	Cubic Feet	1	2	3
B24	13.3	452	532	615
B27	14.9	487	575	660
B30	16.5	522	621	710
B33	18.1	568	666	766
B36	19.6	615	720	830
B42	22.8	662	779	896

- Roll tray kits available for 24"-42" widths.
- B42 not available in Omni Admiral.



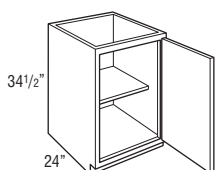
FULL HEIGHT BASE SINGLE DOOR

34½" High

24" Deep

Model	Cubic Feet	1	2	3
B9FHR	5.4	281	331	380
B15FHR	8.5	282	333	386
B18FHR	10.1	303	360	409

- Cabinet hinged on the right; door may be flipped for left hinge application.
- Roll tray kits available for 15"-18" widths.
- B15FHR, B18FHR not available in Omni Admiral.



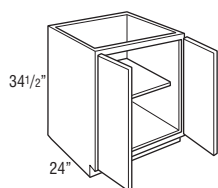
FULL HEIGHT BASE DOUBLE DOOR

34½" High

24" Deep

Model	Cubic Feet	1	2	3
B24FH	13.3	372	438	503
B30FH	16.5	432	508	584
B36FH	19.6	461	541	624

- Roll tray kits available for 24"-36" widths.
- Not available in Omni Admiral.



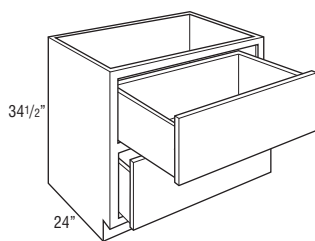
2 DRAWER BASE

34½" High

24" Deep

Model	Cubic Feet	1	2	3
2DB30	16.5	686	810	932
2DB36	19.6	752	885	1017

- On door styles with slab drawer fronts, all drawer fronts will be slab.
- Not available in Omni Admiral.



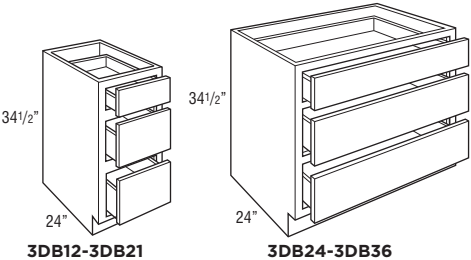
3 DRAWER BASE

34½" High

24" Deep

Model	Cubic Feet	1	2	3
3DB12	7.0	438	515	591
3DB15	8.5	478	561	645
3DB18	10.1	520	618	708
3DB21	11.7	575	674	777
3DB24	13.3	631	740	851
3DB30	16.5	686	810	932
3DB36	19.6	752	885	1017

- On door styles with slab drawer fronts, all drawer fronts will be slab.
- 3DB12 not available in Omni Admiral.



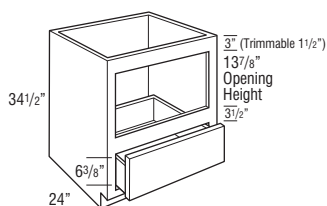
BASE BUILT-IN MICROWAVE WITH DRAWER

34½" High

24" Deep

Model	Cubic Feet	1	2	3
BBMWD30	16.1	656	776	889

- The usable cabinet face height between top of drawer front and top of cabinet is 19 1/8" for partial overlay and 19 3/4" for full overlay. Be sure to verify overall appliance height, gap requirements, and cut-out dimensions with cabinet specifications.
- Metal appliance support brackets included.



Model	Opening Width	Maximum Width	Opening Height	Maximum Height
BBMWD30	27"	28 1/2"	13 7/8"	16 7/8"

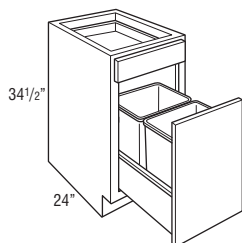
BASE WASTEBASKET

34½" High

24" Deep

Model	Cubic Feet	1	2	3
BWB18	10.3	595	704	810

- Pull-out features undermount full extension, soft-close guides.
- Includes two 35 quart gray wastebaskets.



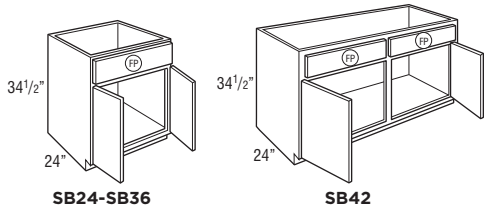
SINK BASE

34 1/2" High

24" Deep

Model	Cubic Feet	1	2	3
SB24	13.3	353	411	475
SB27	14.9	372	438	508
SB30	16.5	391	457	522
SB33	18.1	427	505	580
SB36	19.6	448	529	610
SB42	22.8	475	557	642

- Mini Touch-Up Kit (MTUK) included. MTUK includes small touch-up marker and small fill stick.
- Tilt-out tray kits available.
- SB24, SB27, SB42 not available in Omni Admiral.



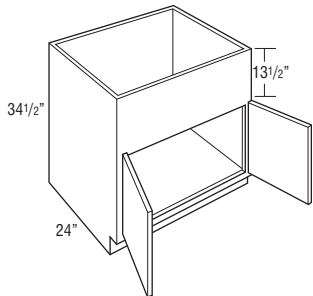
COUNTRY SINK BASE

34 1/2" High

24" Deep

Model	Cubic Feet	1	2	3
CNTYSB36	19.6	561	660	761

- 13 1/2" panel can be trimmed up to 12".
- Mini Touch-Up Kit (MTUK) included. MTUK includes small touch-up marker and small fill stick.
- Refer to manufacturer's recommendations for additional support required for apron front sinks.

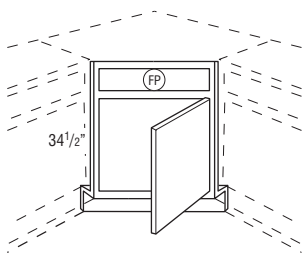


ANGLED CORNER SINK FRONT

34½" High

Model	Cubic Feet	1	2	3
ACSF36R	2.9	282	333	386

- Frame edges beveled at 45°.
- Toekick and toekick retainer shipped unattached from the face frame.
- Sink base floor not included.
- Cabinet hinged on the right; door may be flipped for left hinge application.
- Not available in Omni Admiral.



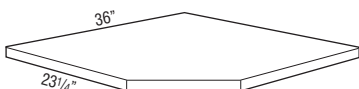
Max. Sink Widths if cut-out is 4" back from face of front frame

Wall Width	Frame	Maximum Sink Width	Maximum Sink Depth
36" x 36"	17"	25 3/4"	27 11/32"

ANGLED CORNER SINK FRONT BOTTOM

Model	Cubic Feet	1	2	3
ACSF36	1.0	152	152	152

- Designed for use with Angled Corner Sink Front.
- 3/4" thick.
- 1-side laminated plywood.
- Not available in Omni Admiral.

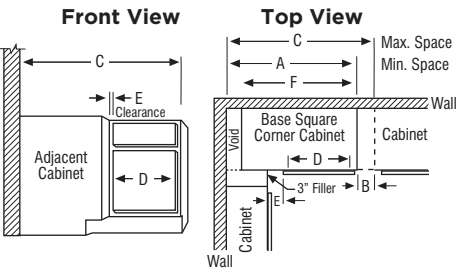


BASE CORNER CABINETS

SKU	A Min. Space	B Max. Pull	C Max. Space	D Cabinet Opening	E Full Overlay		E Partial Overlay		F Actual Cabinet
BC36S	36"	6"	42"	7 1/2"	At Min.	At Max.	At Min.	At Max.	27"
BC42S	42"	6"	48"	13 1/2"	At Min.	At Max.	At Min.	At Max.	39"
BC48S	48"	3"	51"	16 1/2"	At Min.	At Max.	At Min.	At Max.	45"

- BCs use the wall space the nomenclature implies and may be pulled up to 3" to accommodate odd dimensions in a kitchen.
- Remember to use 3" filler on adjoining cabinets.
- The adjoining run of cabinets will cover the void.

NOTE:
Full overlay styles must be pulled an additional 1 1/2" to ensure proper drawer/pull clearance. 1 1/2" pull is not included in minimum and maximum list.



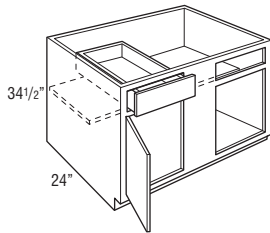
BASE CORNER SINGLE DOOR

34 1/2" High

24" Deep

Model	Cubic Feet	1	2	3
BC36S	15.0	427	505	580
BC42S	21.3	482	568	655
BC48S	24.5	561	660	761

- Right blind shown; door and drawer can be reversed for left blind application.
- Filler required for installation. Must be ordered separately.
- BC36S and BC48S not available in Omni Admiral.



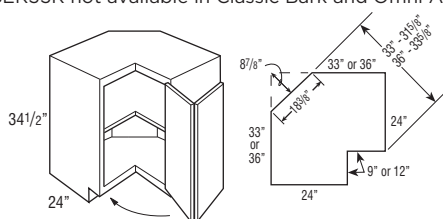
BASE EASY REACH

34 1/2" High

24" Deep

Model	Cubic Feet	1	2	3
BER33R	26.3	663	762	877
BER36R	29.1	708	832	960

- BER33R wall width is 33" x 33". BER36R wall width is 36" x 36".
- Decorative hardware screws must be countersunk to prevent scratching of adjacent cabinets and face frame of BER.
- Not recommended for use next to an appliance deeper than standard cabinet depth.
- Soft-close not available.
- Cabinet hinged on the right; door may be flipped for left hinge application.
- BER33R not available in Classic Bark and Omni Admiral.



Due to the fixed shelves mounting shelves cannot be retrofitted.

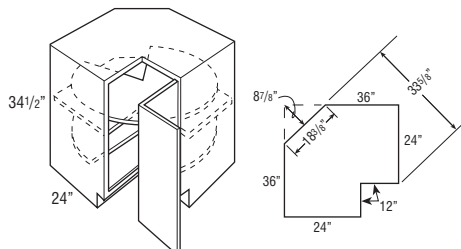
SUPER LAZY SUSAN

34 1/2" High

24" Deep

Model	Cubic Feet	1	2	3
SLS36R	29.1	896	1050	1207

- Wall width is 36" x 36".
- Features two plywood revolving shelves. Lower shelf is mounted to floor. Upper shelf is mounted to fixed shelf.
- Decorative hardware screws must be countersunk to prevent scratching adjacent cabinets and face frame of SLS.
- Not recommended for use next to an appliance deeper than standard cabinet depth.
- Soft-close not available.
- Cabinet hinged on the right; door may be flipped for left hinge application.



Due to the fixed shelves mounting shelves cannot be retrofitted.

BASE LAZY SUSAN

34½" High

24" Deep

Model	Cubic Feet	1	2	3
BLS36R	20.4	637	750	859

- Wall width is 36" x 36".
- Cabinet is drum-shaped; adjoining cabinets create sides.
- Features two white plastic shelves.
- Decorative hardware screws must be countersunk to prevent scratching of adjacent cabinets and face frame of BLS.
- Not recommended for use next to an appliance deeper than standard cabinet depth.
- Soft-close not available.
- Cabinet hinged on the right; door may be flipped for left hinge application.
- Back material made from MDF.
- Not available in Omni Admiral.

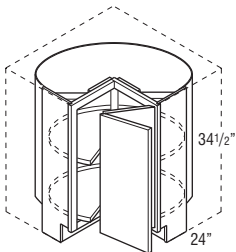
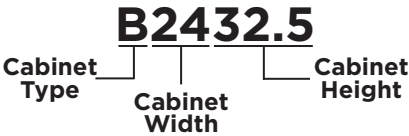


TABLE OF CONTENTS - UNIVERSAL DESIGN CABINETS



32 1/2" High, 24" Deep

Universal Design Base54

Universal Design 3 Drawer Base55

Universal Design Base Built-in Microwave Cabinet with Drawer56

Universal Design Base Sink Removable56

Universal Design Base Corner57

Universal Design Super Lazy Susan58

Universal Design Vanity Base Sink Removable58

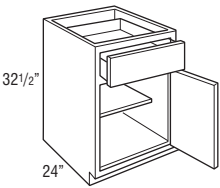
UNIVERSAL DESIGN, BASE SINGLE DOOR

32½" High

24" Deep

Model	Cubic Feet	1	2	3
B932.5R	5.0	•	339	•
B1232.5R	6.5	•	366	•
B1532.5R	8.0	•	397	•
B1832.5R	9.4	•	427	•
B2132.5R	10.9	•	461	•

- Cabinet hinged on the right; door may be flipped for left hinge application.
- Roll tray kits available for 15"-21" widths.
- Only available in Omni Snow.



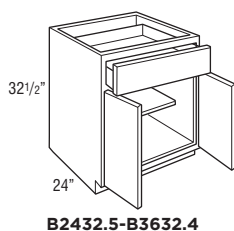
UNIVERSAL DESIGN, BASE DOUBLE DOOR

32½" High

24" Deep

Model	Cubic Feet	1	2	3
B2432.5	12.4	•	532	•
B3032.5	15.3	•	621	•
B3332.5	16.8	•	666	•
B3632.5	18.3	•	720	•

- Roll tray kits available for 24"-36" widths.
- Only available in Omni Snow.



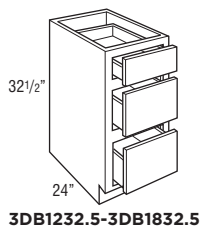
UNIVERSAL DESIGN, 3 DRAWER BASE

32½" High

24" Deep

Model	Cubic Feet	1	2	3
3DB1232.5	6.3	•	515	•
3DB1532.5	8.0	•	561	•
3DB1832.5	9.4	•	618	•

- On door styles with slab drawer fronts, all drawer fronts will be slab.
- Only available in Omni Snow.



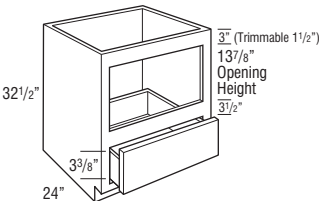
UNIVERSAL DESIGN, BASE BUILT-IN MICROWAVE WITH DRAWER

32½" High

24" Deep

Model	Cubic Feet	1	2	3
BBMWD3032.5	15.3	•	737	•

- Matching Interior.
- Only available in Omni Snow.
- Metal appliance support brackets included.



Model	Opening Width	Maximum Width	Opening Height	Maximum Height
BBMWD30	27"	28 1/2"	13 7/8"	16 7/8"

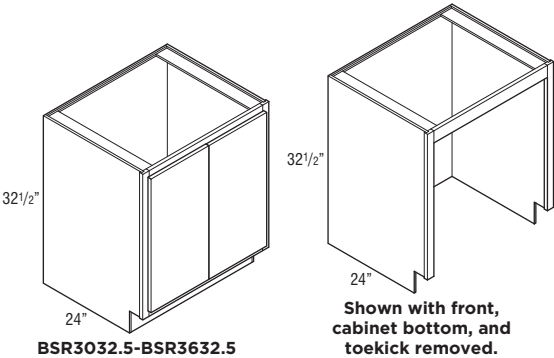
UNIVERSAL DESIGN, BASE SINK REMOVABLE

32½" High

24" Deep

Model	Cubic Feet	1	2	3
BSR3032.5	13.7	•	376	•
BSR3332.5	14.9	•	386	•
BSR3632.5	16.4	•	397	•

- Cabinet must supported on both sides. Not intended for end of run.
- Front, cabinet bottom, and toekick are removable.
- Mini Touch-Up Kit (MTUK) included. MTUK includes small touch-up marker and small fill stick.
- Only available in Omni Snow.



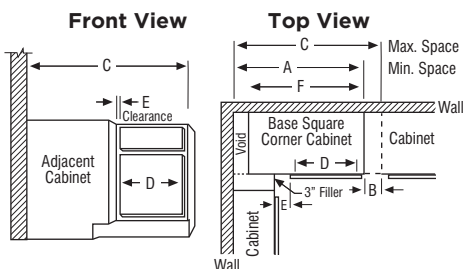
UNIVERSAL DESIGN CORNER CABINETS

SKU	A Min. Space	B Max. Pull	C Max. Space	D Cabinet Opening	E Full Overlay At Min. At Max.		E Partial Overlay At Min. At Max.		F Actual Cabinet
BC3632.5S	32"	6"	42"	7 1/2"	1 3/4"	7 3/4"	2 1/2"	8 1/2"	27"

- BCs use the wall space the nomenclature implies and may be pulled up to 3" to accommodate odd dimensions in a kitchen.
- Remember to use 3" filler on adjoining cabinets.
- The adjoining run of cabinets will cover the void.

NOTE:

Full overlay styles must be pulled an additional 1 1/2" to ensure proper drawer/pull clearance. 1 1/2" pull is not included in minimum and maximum list.



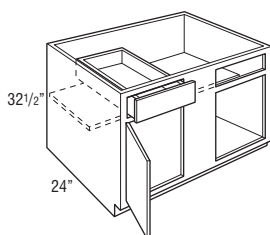
UNIVERSAL DESIGN, BASE CORNER SINGLE DOOR

32 1/2" High

24" Deep

Model	Cubic Feet	1	2	3
BC3632.5S	14.1	•	505	•

- Right blind shown; door and drawer can be reversed for left blind application.
- Filler required for installation. Must be ordered separately.
- Only available in Omni Snow.



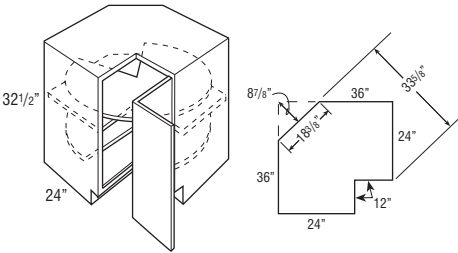
UNIVERSAL DESIGN, SUPER LAZY SUSAN

32½" High

24" Deep

Model	Cubic Feet	1	2	3
SLS3632.5R	18.4	•	1050	•

- Wall width is 36" x 36".
- Features two plywood revolving shelves. Lower shelf is mounted to floor. Upper shelf is mounted to fixed shelf.
- Decorative hardware screws must be countersunk to prevent scratching adjacent cabinets and face frame of SLS.
- Not recommended for use next to an appliance deeper than standard cabinet depth.
- Soft-close not available.
- Cabinet hinged on the right; door may be flipped for left hinge application.
- Only available in Omni Snow.



Due to the fixed shelves mounting shelves cannot be retrofitted.

UNIVERSAL DESIGN, VANITY BASE SINK REMOVABLE

32½" High

21" Deep

Model	Cubic Feet	1	2	3
VBSR3032.521	13.7	•	484	•
VBSR3332.521	14.9	•	498	•
VBSR3632.521	16.3	•	510	•

- Cabinet must supported on both sides. Not intended for end of run.
- Front, cabinet bottom, and toekick are removable.
- Mini Touch-Up Kit (MTUK) included. MTUK includes small touch-up marker and small fill stick.
- Only available in Omni Snow.

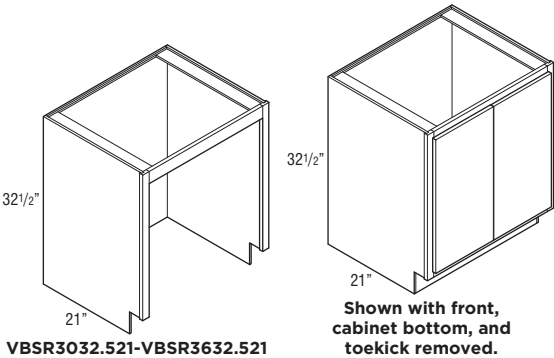
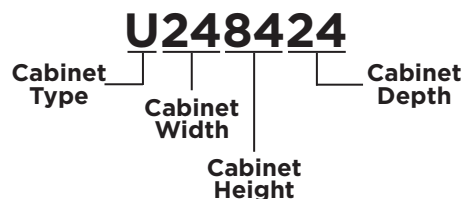


TABLE OF CONTENTS – TALL CABINETS

**18" Wide Utility Single Door**

84" High	60
90" High	60
93" High	61
96" High	61

24" Wide Utility Double Door

84" High	62
90" High	62
93" High	63
96" High	63

30" Wide Utility Double Door

84" High	64
90" High	64
93" High	65
96" High	65

33" Wide Oven 3 Drawers

84" High	66
90" High	66
93" High	67
96" High	67

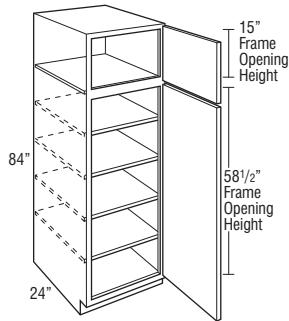
18" WIDE UTILITY SINGLE DOOR

84" High

24" Deep

Model	Cubic Feet	1	2	3
U188424R	23.4	803	943	1085

- Roll tray kits available.
- Cabinet hinged on the right; door may be flipped for left hinge application.



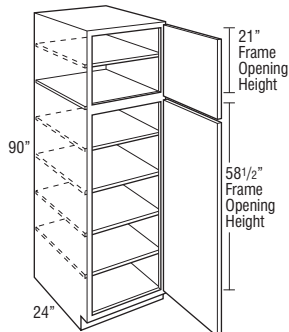
18" WIDE UTILITY SINGLE DOOR

90" High

24" Deep

Model	Cubic Feet	1	2	3
U189024R	25.4	896	1050	1207

- Roll tray kits available.
- Cabinet hinged on the right; door may be flipped for left hinge application.



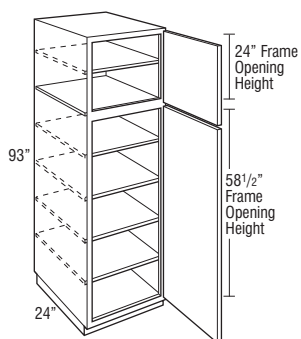
18" WIDE UTILITY SINGLE DOOR

93" High

24" Deep

Model	Cubic Feet	1	2	3
U189324R	26.1	911	1069	1231

- Separate pedestal base included on 93" tall.
- Roll tray kits available.
- Cabinet hinged on the right; door may be flipped for left hinge application.
- Not available in Classic Bark and Omni Admiral.



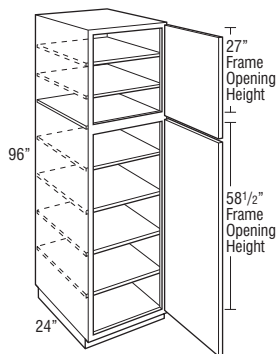
18" WIDE UTILITY SINGLE DOOR

96" High

24" Deep

Model	Cubic Feet	1	2	3
U189624R	27.0	998	1173	1349

- Separate pedestal base included on 96" tall.
- Roll tray kits available.
- Cabinet hinged on the right; door may be flipped for left hinge application.
- Not available in Omni Admiral.



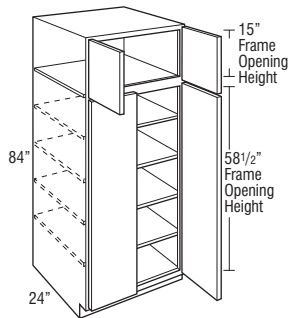
24" WIDE UTILITY DOUBLE DOOR

84" High

24" Deep

Model	Cubic Feet	1	2	3
U248424	30.9	975	1151	1325

- Roll tray kits available.
- Not available in Omni Admiral.



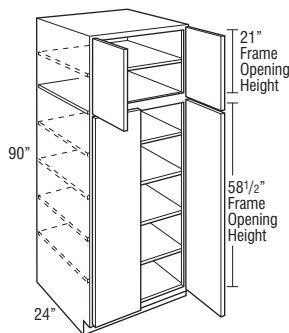
24" WIDE UTILITY DOUBLE DOOR

90" High

24" Deep

Model	Cubic Feet	1	2	3
U249024	33.4	1096	1289	1480

- Roll tray kits available.
- Not available in Omni Admiral.



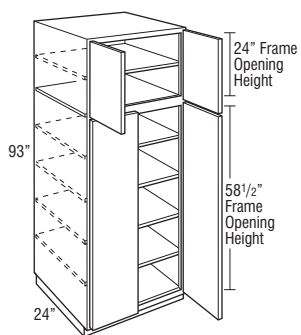
24" WIDE UTILITY DOUBLE DOOR

93" High

24" Deep

Model	Cubic Feet	1	2	3
U249324	34.5	1118	1315	1510

- Separate pedestal base included on 93" tall.
- Roll tray kits available.
- Not available in Classic Bark and Omni Admiral.



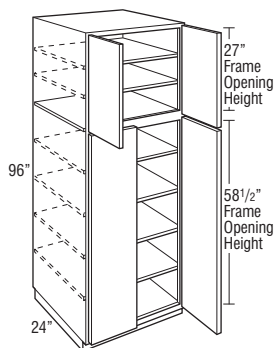
24" WIDE UTILITY DOUBLE DOOR

96" High

24" Deep

Model	Cubic Feet	1	2	3
U249624	35.6	1228	1445	1659

- Separate pedestal base included on 96" tall.
- Roll tray kits available.
- Not available in Omni Admiral.



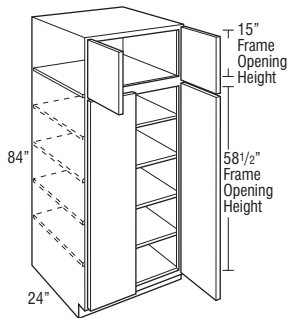
30" WIDE UTILITY DOUBLE DOOR

84" High

24" Deep

Model	Cubic Feet	1	2	3
U308424	43.0	1156	1360	1563

- Roll tray kits available.
- Not available in Classic Bark and Omni Admiral.



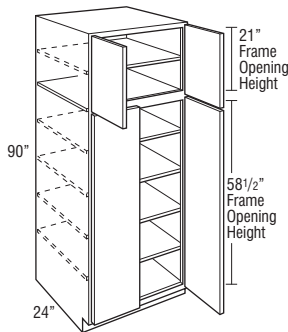
30" WIDE UTILITY DOUBLE DOOR

90" High

24" Deep

Model	Cubic Feet	1	2	3
U309024	46.0	1298	1527	1755

- Roll tray kits available.
- Not available in Classic Bark and Omni Admiral.



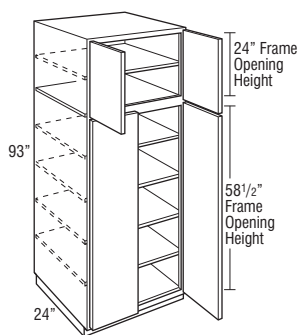
30" WIDE UTILITY DOUBLE DOOR

93" High

24" Deep

Model	Cubic Feet	1	2	3
U309324	46.5	1379	1622	1864

- Separate pedestal base included on 93" tall.
- Roll tray kits available.
- Not available in Classic Bark and Omni Admiral.



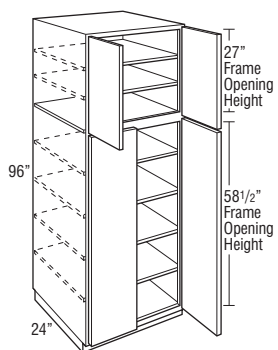
30" WIDE UTILITY DOUBLE DOOR

96" High

24" Deep

Model	Cubic Feet	1	2	3
U309624	49.0	1459	1716	1973

- Separate pedestal base included on 96" tall.
- Roll tray kits available.
- Not available in Classic Bark and Omni Admiral.



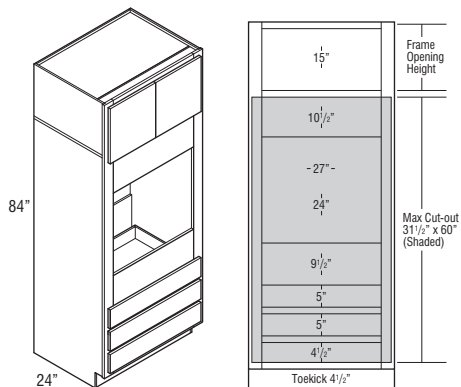
33" WIDE OVEN 3 DRAWERS

84" High

24" Deep

Model	Cubic Feet	1	2	3
OC3D338424	47.7	1279	1501	1725

- Oven cabinets feature an open back in cut-out area designed to improve field appliance installation.
- Metal appliance support brackets included for 24" deep cabinets.
- Confirm a heat shield is built into your appliance by the manufacturer.
- Not available in Omni Admiral.



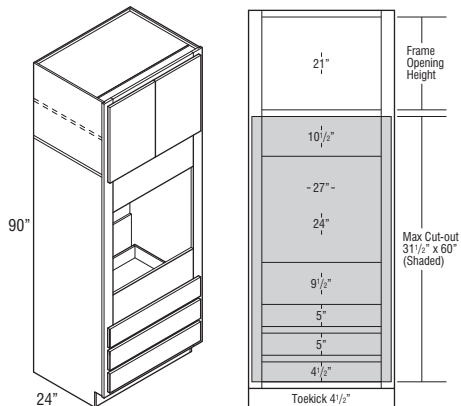
33" WIDE OVEN 3 DRAWERS

90" High

24" Deep

Model	Cubic Feet	1	2	3
OC3D339024	51.0	1497	1760	2024

- Oven cabinets feature an open back in cut-out area designed to improve field appliance installation.
- Metal appliance support brackets included for 24" deep cabinets.
- Confirm a heat shield is built into your appliance by the manufacturer.
- Not available in Omni Admiral.



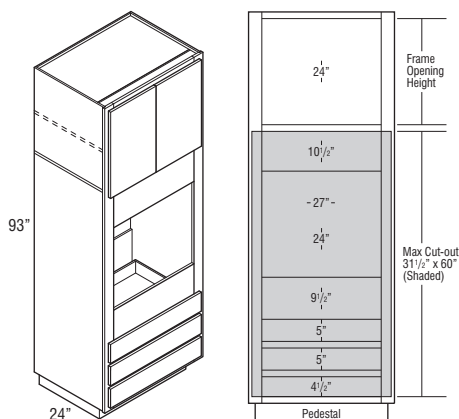
33" WIDE OVEN 3 DRAWERS

93" High

24" Deep

Model	Cubic Feet	1	2	3
OC3D339324	52.6	1531	1802	2073

- Oven cabinets feature an open back in cut-out area designed to improve field appliance installation.
- Metal appliance support brackets included for 24" deep cabinets.
- Separate pedestal base included on 93" tall.
- Confirm a heat shield is built into your appliance by the manufacturer.
- Not available in Classic Bark and Omni Admiral.



33" WIDE OVEN 3 DRAWERS

96" High

24" Deep

Model	Cubic Feet	1	2	3
OC3D339624	54.3	1685	1985	2283

- Oven cabinets feature an open back in cut-out area designed to improve field appliance installation.
- Metal appliance support brackets included for 24" deep cabinets.
- Separate pedestal base included on 96" tall.
- Confirm a heat shield is built into your appliance by the manufacturer.
- Not available in Omni Admiral.

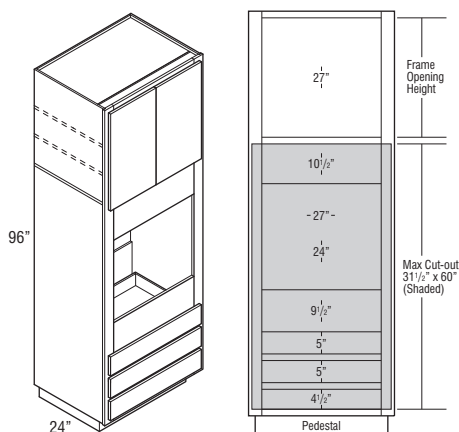
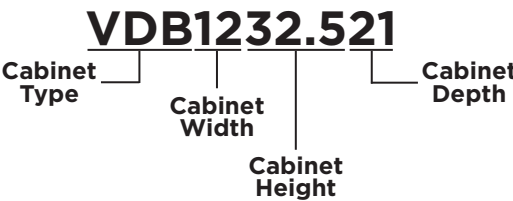


TABLE OF CONTENTS - VANITY CABINETS



32 1/2" High, 21" Deep

Vanity Drawer Base69

Vanity Sink Base70

34 1/2" High, 18" Deep

Vanity Sink Base70

34 1/2" High, 21" Deep

Vanity Base with Drawer71

Vanity Drawer Base71

Vanity Sink Base72

Vanity Sink Base - Admiral72

Vanity Sink Drawer Base73

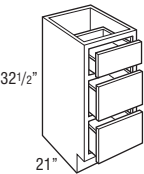
VANITY DRAWER BASE

32½" High

21" Deep

Model	Cubic Feet	1	2	3
VDB1232.521	5.7	425	499	571
VDB1532.521	7.1	465	548	631
VDB1832.521	8.4	508	595	686

- On door styles with slab drawer fronts, all drawer fronts will be slab.
- Not available in Omni Admiral.



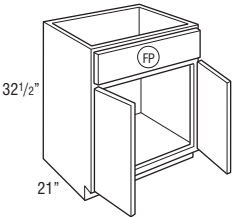
VANITY SINK BASE

32½" High

21" Deep

Model	Cubic Feet	1	2	3
VSB2432.521	11.0	339	401	461
VSB3032.521	13.7	378	445	515
VSB3632.521	16.3	438	515	591

- Tilt-out tray kits available.
- Not available in Omni Admiral.



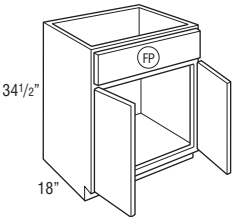
VANITY SINK BASE

34½" High

18" Deep

Model	Cubic Feet	1	2	3
VSB243418	10.2	•	486	•

- Tilt-out tray kits available.
- Only available in Omni Snow.



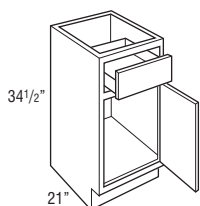
VANITY BASE SINGLE DOOR

34½" High

21" Deep

Model	Cubic Feet	1	2	3
VB153421R	7.6	324	380	438
VB183421R	9.0	353	411	475

- Cabinet hinged on the right; door may be flipped for left hinge application.
- Not available in Omni Admiral.



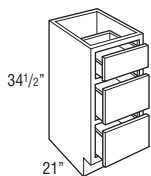
VANITY DRAWER BASE

34½" High

21" Deep

Model	Cubic Feet	1	2	3
VDB123421	6.2	425	499	571
VDB153421	7.6	465	548	631
VDB183421	8.9	508	595	686

- On door styles with slab drawer fronts, all drawer fronts will be slab.
- Not available in Omni Admiral.



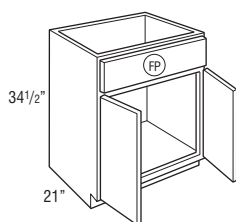
VANITY SINK BASE

34½" High

21" Deep

Model	Cubic Feet	1	2	3
VSB243421	11.9	339	401	461
VSB303421	14.7	378	445	515
VSB363421	17.5	438	515	591

• Tilt-out tray kits available.



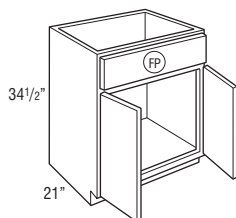
VANITY SINK BASE - ADMIRAL

34½" High

21" Deep

Model	Cubic Feet	1	2	3
VSB243421	11.9	•	482	•
VSB303421	14.7	•	534	•
VSB363421	17.5	•	617	•

• Tilt-out tray kits available.



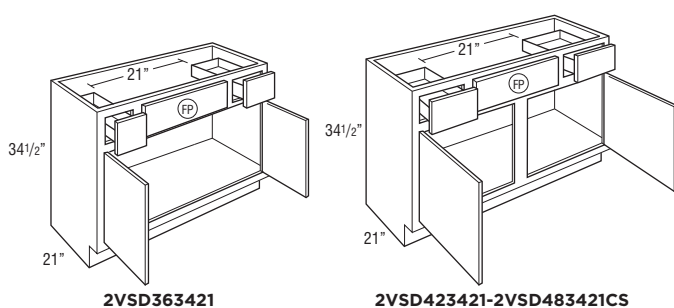
VANITY SINK DRAWER BASE

34½" High

21" Deep

Model	Cubic Feet	1	2	3
2VSD363421	17.4	580	684	784
2VSD423421	20.3	631	743	854
2VSD483421CS	23.1	690	814	936

• Not available in Omni Admiral.



VANITY SINK DRAWER BASE

34½" High

21" Deep

Model	Cubic Feet	1	2	3
3VSD303421	14.7	•	733	846
3VSD363421	17.5	•	854	980

- Top drawer is scoop drawer; 6 inches from top.
- Matching finished interior.
- 3VSD has open toekick. Toeboard can be used to cover if not desired.
- Door(s) are on the left and drawers are on the right; cannot be flipped.
- Not available in Omni Admiral.

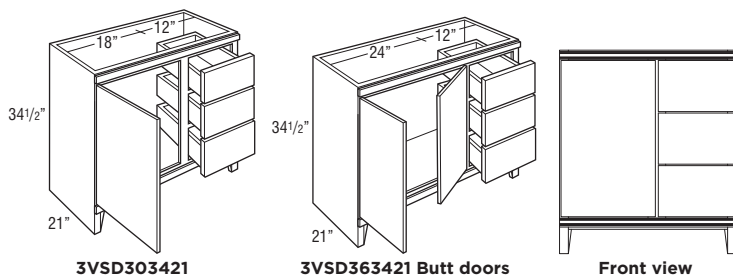


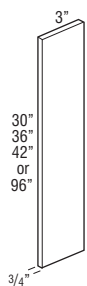
TABLE OF CONTENTS – FILLERS, SKINS, PANELS, & MOULDING

Fillers	75
Skins	77
Panels	79
Crown Moulding	82
Starter Moulding	84
Accent Moulding	85
Corner Moulding	86
Toeboard	88
Straight Valance / Baseboard	88

3" FILLER

Model	Cubic Feet	Price
F330	0.2	44
F336	0.2	49
F342	0.2	55
TF396FH	0.5	124

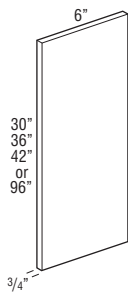
- 3/4" thick.
- Finished on front and two long edges (backs are not finished).
- F342, TF396FH not available in Omni Admiral.



6" FILLER

Model	Cubic Feet	Price
F630	0.2	82
F636	0.2	90
F642	0.2	102
TF696FH	0.5	197

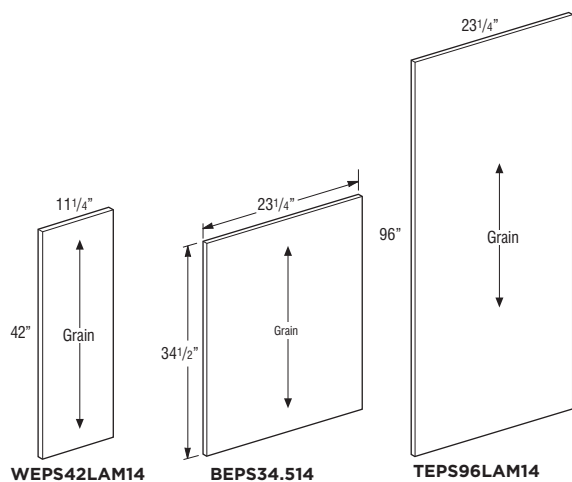
- 3/4" thick.
- Finished on front and two long edges (backs are not finished).
- Not available in Omni Admiral.



END PANEL SKINS

Model	Cubic Feet	Price
WEPS42LAM14	0.5	87
BEPS34.514	0.7	79
TEPS96LAM14	2.7	152

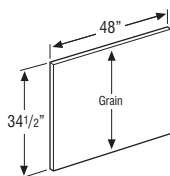
- 1/4" thick laminated furniture board.
- One side matching exterior and the other side Natural Maple laminate interior.
- Not available in Omni Admiral.



FINISHED BACK SKINS

Model	Cubic Feet	Price
BP4834.514	1.1	90

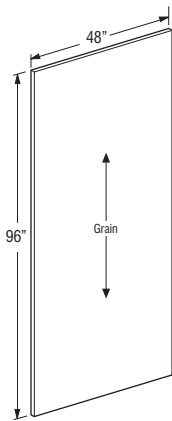
- 1/4" thick laminated furniture board.
- Grain runs with 34.5".
- One side matching exterior and the other side is unfinished.
- Not available in Omni Admiral.



FINISHED BACK SKINS

Model	Cubic Feet	Price
BP4896LAM14	2.7	197

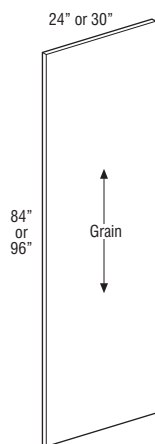
- 1/4" thick laminated furniture board.
- Grain runs with 96".
- One side matching exterior and the other side is unfinished.



TALL END PANEL

Model	Cubic Feet	Price
TEP2484LAM	1.3	216
TEP2496LAM	1.3	259
TEP3096LAM	1.3	324

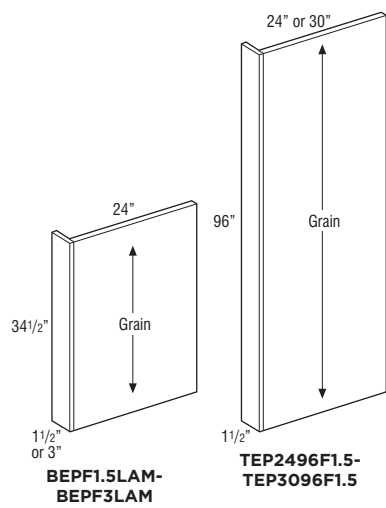
- 3/4" thick laminated furniture board.
- Panels are edgebanded on front edge.
- Matching exterior on both sides.
- Not available in Omni Admiral.



BASE AND TALL PANELS WITH FILLER ATTACHED

Model	Cubic Feet	Price
BEPF1.5LAM	1.7	116
BEPF3LAM	1.7	140
TEP2496F1.5	1.3	299
TEP3096F1.5	1.3	448

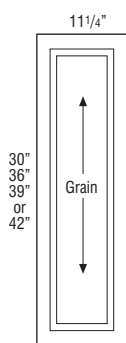
- 1/2" thick laminated furniture board.
- One side matching exterior and the other side Natural Maple laminate interior.
- BEPF1.5LAM, TEP3096F1.5 not available in Omni Admiral.



WALL END DECORATIVE DOOR PANEL KIT

Model	Cubic Feet	1	2	3
WED1230	0.8	•	153	177
WED1236	0.9	•	175	203
WED1239	1.0	•	188	216
WED1242	1.1	•	201	231

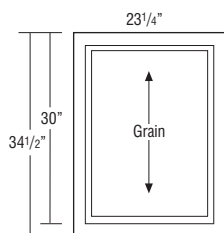
- Door panel kits include Wall End Panel Skin and doors with attachment screws for field installation.
- WED1239, WED1242 not available in Omni Admiral.



BASE END DECORATIVE DOOR PANEL KIT

Model	Cubic Feet	1	2	3
BEDSD	1.6	•	231	263

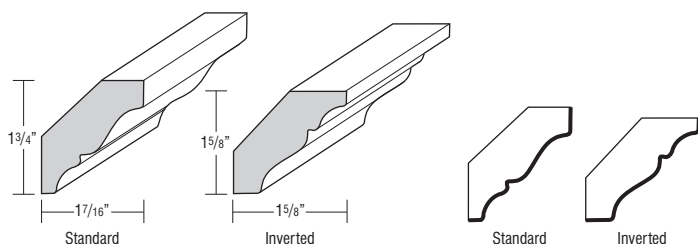
- Door panel kits include Base End Panel Skin and doors with attachment screws for field installation.



CROWN MOULDING, SOLID WOOD CROWN

Model	Cubic Feet	Price
SWCRM8	0.5	110

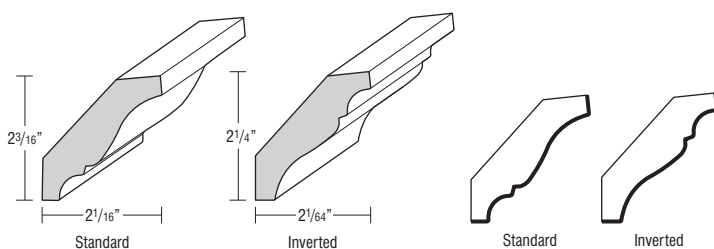
- Face mounts on Partial Overlay doors.
- May be face mounted on Full Overlay if used with a cleat.
- One 8' section.
- Moulding can be used as standard or inverted.
- Finished edges indicated by bold lines on side view drawings.



CROWN MOULDING, SOLID WOOD LARGE CROWN

Model	Cubic Feet	Price
SWLCRM8	0.5	142

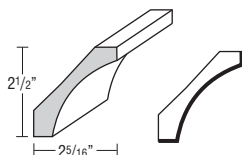
- Face mounts on Partial Overlay doors.
- May be face mounted on Full Overlay if used with a cleat.
- One 8' section.
- Moulding can be used as standard or inverted.
- Finished edges indicated by bold lines on side view drawings.
- Not available in Omni Admiral.



CROWN MOULDING, SMALL COVE CROWN

Model	Cubic Feet	Price
SMCOVECROWN8	1.0	179

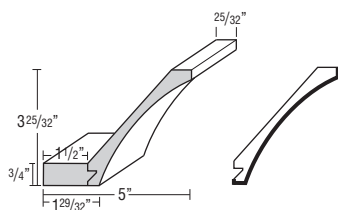
- One 8' section.
- Finished edges indicated by bold lines on side view drawings.



CROWN MOULDING, COVE CROWN

Model	Cubic Feet	Price
COVECROWN8	1.0	221

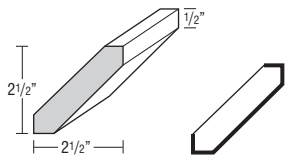
- One 8' section.
- Cleat shipped unattached can be used for top mount or face frame applications.
- Finished edges indicated by bold lines on side view drawings.
- Not available in Omni Admiral.



LARGE SHAKER CROWN

Model	Cubic Feet	Price
LSHAKER8 <small>new</small>	1.0	135

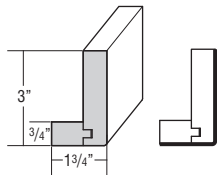
- One 8' section.
- Finished edges indicated by bold lines on side view drawings.
- Not available in Classic Bark and Omni Admiral.



STARTER MOULDING, SHAKER

Model	Cubic Feet	Price
STRS8	1.0	345

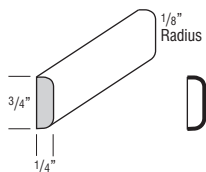
- One 8' section.
- Finished edges indicated by bold lines on side view drawings.



ACCENT MOULDING, FLAT SCRIBE

Model	Cubic Feet	Price
SM8	0.5	44

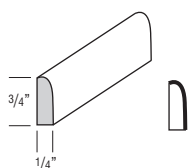
- One 8' section.
- Finished edges indicated by bold lines on side view drawings.



ACCENT MOULDING, SMALL SCRIBE

Model	Cubic Feet	Price
SSM8	0.5	44

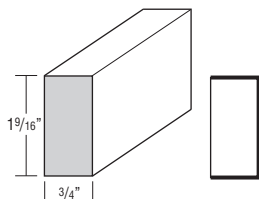
- One 8' section.
- Finished edges indicated by bold lines on side view drawings.



ACCENT MOULDING, LIGHT BAFFLE

Model	Cubic Feet	Price
LB2	0.5	79

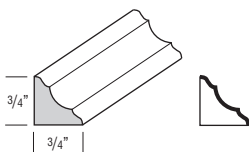
- One 8' section.
- Finished edges indicated by bold lines on side view drawings.



CORNER MOULDING, INSIDE CORNER

Model	Cubic Feet	Price
ICM8	0.5	63

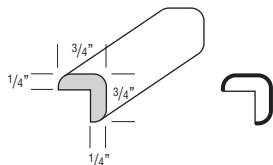
- One 8' section.
- Finished edges indicated by bold lines on side view drawings.
- Not available in Omni Admiral.



CORNER MOULDING, OUTSIDE CORNER

Model	Cubic Feet	Price
OCM8	0.5	63

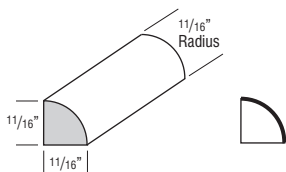
- One 8' section.



CORNER MOULDING, QUARTER ROUND

Model	Cubic Feet	Price
QRM	0.5	66

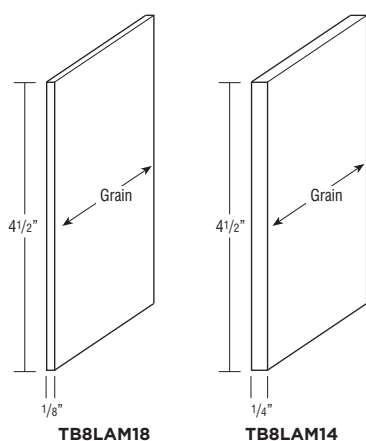
- One 8' section.
- Finished edges indicated by bold lines on side view drawings.



TOEBOARD

Model	Cubic Feet	Price
TB8LAM18	0.1	36
TB8LAM14	0.1	44

- One 8' section.
- TB8LAM18: 1/8" laminated furniture board.
- TB8LAM14: 1/4" laminated furniture board.
- TB8LAM18 not available in Omni Admiral.



STRAIGHT VALANCE / BASEBOARD

Model	Cubic Feet	Price
VV48	0.4	77
VV96	0.4	152

- Trimmable.
- Profiled bottom edge 3/4" thick.
- VV48 not available in Omni Admiral.

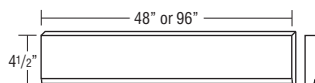


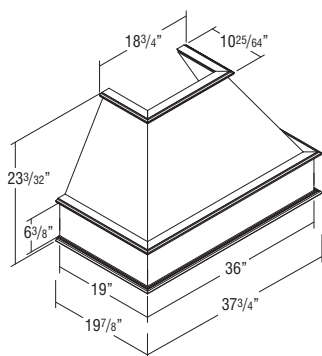
TABLE OF CONTENTS – ACCESSORIES

Classic Square Wood Hood	90
Classic Wood Hood Chimney	90
Wood Hood Blower	91
Roll Tray Kits	92
Tilt-out Trays	93
Cutlery Insert Wood Organizer	94
Stain, Paint, & Touch-up Tools	95

CLASSIC SQUARE WOOD HOOD

Model	Cubic Feet	Price
WHS36	30.0	2458

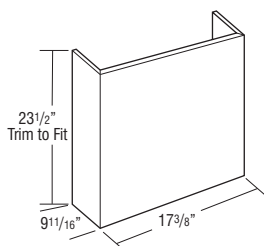
- Freestanding unit (must be properly secured to wall and cannot be attached to adjacent cabinets).
- Exhaust system not included. Compatible with BLOWER400.
- Compatible with Classic Wood Hood Chimney (WHC_ _), which can be trimmed. See below.
- Check your local building code for installation heights above the range.
- Silver metallic liner included. Assembly required.
- Installation instructions and hardware included.
- Liner opening size: 10 1/4" deep by 19 1/2" wide.
- Only available in Classic Snow, Omni Snow, and Spectra Snow.



CLASSIC WOOD HOOD CHIMNEY

Model	Cubic Feet	Price
WHC36	4.1	463

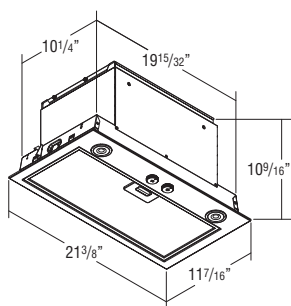
- 3/4" thick plywood.
- Trimmable.
- If trimmed, moulding is recommended to conceal any cut marks.
- Only available in Classic Snow, Omni Snow, and Spectra Snow.



WOOD HOOD BLOWER, 400 CFM

Model	Cubic Feet	Price
BLOWER400	2.9	939

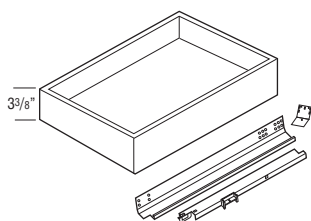
- 400 CFM, Energy Star rated.
- Two 2.8 watt (250+ Lumens) LED lights included.
- Installation instructions, warranty, and repair information included.
- Stainless Steel finish.
- Three speed rotary switch control.
- Includes removable dishwasher safe grease filter.
- Heat Sentry technology included.
- Sound rating is 7.0 sones on highest setting.
- Vertical ducting requires 7" diameter vent.
- 1 year warranty.



ROLL TRAY KITS

Model	Cubic Feet	Price
RT15WD	0.5	127
RT18WD	0.8	133
RT21WD	0.9	137
RT24WD	1.0	142
RT27WD	1.4	148
RT30WD	1.4	152
RT33WD	1.6	159
RT36WD	1.6	165
RT42WD	1.8	272

- 5/8" solid-wood dovetail roll tray with soft-closing, undermount, full extension guides.
- RT15WD-RT36WD kits contain 1 roll tray, roll tray brackets, hardware, and screws.
- RT42WD kits contain 2 roll trays, roll tray brackets, hardware, and screws.
- Exterior dimensions of roll trays are 21" deep x 3 3/8" tall (fits standard 24" deep cabinet).

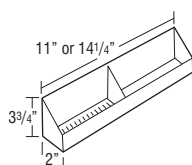


Width	Application
15"	B15, B15FH, B1532.5
18"	B18, B18FH, B1832.5, U18
21"	B21, B2132.5
24"	B24, B24FH, B2432.5, U24
27"	B27, B2732.5
30"	B30, B30FHB, B3032.5, U30
33"	B33, B3332.5
36"	B36, B36FH, B3632.5
42"	B42, B4232.5

TILT-OUT TRAYS

Model	Cubic Feet	Price
TOT15	0.1	82
TOT18	0.2	82

- TOT15: 11" w X 2" d X 3 3/4"
- TOT18: 14 1/4" w X 2" d X 3 3/4"
- Kit includes two white plastic trays and one pair of tilt-out hinges that attaches to the inside of the false panel.
- One tilt-out tray per false panel on cabinets less than 30" wide and greater than 36" wide, two tilt-out trays attached to one false panel on 30"-36" wide cabinets.

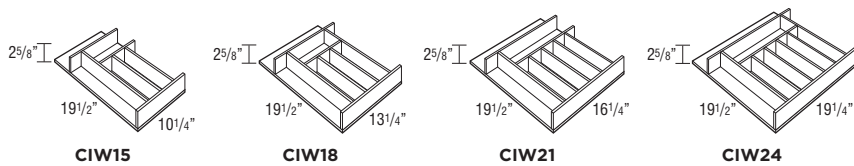


Cab Width	TOT Size	Cabinets
24"	TOT18	SB24, VSB2432.521, VSB243418, VSB243421
27"	TOT18	SB27, SB2732.5
30"	TOT15	SB30, VSB3032.521, VSB303421
33"	TOT15	SB33
36"	TOT18	SB36, VSB3632.521, VSB363421
42"	TOT18	SB42

CUTLERY INSERT WOOD ORGANIZER

Model	Cubic Feet	Price
CIW15 new	1.0	144
CIW18 new	1.0	154
CIW21 new	1.0	199
CIW24 new	1.0	213

- Pre-assembled natural wood drawer insert.
- Place a cabinet with a CIW next to the dishwasher for convenience.



Model	Application
CIW15	15" Base
CIW18	18" Base
CIW21	21" Base
CIW24	24" Base

STAIN & PAINT

Model	Cubic Feet	Price
QUARTCOLOR	0.1	124
SSC	0.1	46
SSCCLEAR	0.1	46

- Wiping stain can be sprayed at low pressure.
- SSC is a 384 mL aerosol can available in Paint colors.
- SSCCLEAR is a 384 mL aerosol can in clear.

TOUCH-UP KIT

Model	Cubic Feet	Price
TUK	0.1	65
MTUK	0.1	39

- TUK includes touch-up marker and a fill stick.
- MTUK includes small touch-up marker and a small fill stick.

