



CABNOVA

DOOR STYLES



**Arsenal**  
Paint Smokey Blue



**Brentford**  
Maple Sanibel



**Dover**  
Maple Sand



**Everton**  
Maple Natural



**New Castle**  
Quartersawn White Oak Sand



**Coventry**  
Paint Pearl White



DOOR STYLES

PRICE GROUP 2



**Preston**  
Oak Coastal Mist

PRICE GROUP 2



**Sussex**  
Paint Oyster

PRICE GROUP 2



**Villa**  
Maple Caraway

PRICE GROUP 3



**Kent**  
Paint White Dove

PRICE GROUP 3



**Manchester**  
Oak Clove

# FINISHES

## MAPLE



NATURAL



SAND



FRINTON SAND



CLOVE



MAPUTO



SANIBEL



ELLOREË



CARAWAY



PEPPERCORN

## OAK



NATURAL



SAND



FRINTON SAND



CLOVE



MAPUTO



SANIBEL



ELLOREË



CARAWAY



PEPPERCORN



COASTAL MIST



DRIFTWOOD

# FINISHES

## QUARTER SAWN WHITE OAK



NATURAL



SAND



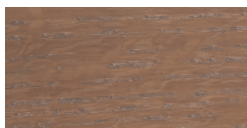
FRINTON SAND



CLOVE



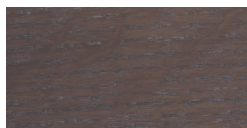
MAPUTO



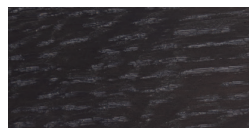
SANIBEL



ELLOREE



CARAWAY



PEPPERCORN

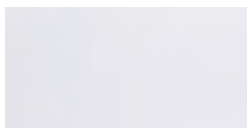


COASTAL MIST



DRIFTWOOD

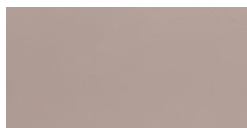
## PAINT



PEARL WHITE



WHITE DOVE



MOREL



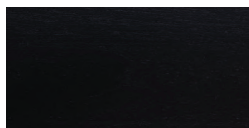
OYSTER



ROSEMARY



SMOKEY BLUE



MATTE BLACK

## NOVA PAINT



ALABASTER



ACCESSIBLE BEIGE



TAUPE OF THE MORNING



MOTH WING



URBANE BRONZE

Sherwin Williams paint colors can be matched with our Sherwin Williams paint match program.

# CONSTRUCTION

## Back

Fully-captured 1/2" plywood, light maple veneer interior with hanging rail.

## Tops and Bottoms

1/2" plywood with light maple veneer interior.

## Adjustable Shelves

3/4" thick light maple veneer plywood shelves.

## Sides

1/2" plywood with light maple veneer interior. Matching stain or paint exterior as specified.

## Hinges

Blum 6 way adjustable soft close door hinges.

## Face Frames

3/4" thick solid wood with 1 1/2" wide stiles and rails. Face frames are assembled with adhesive and pocket screws.

## Back

Fully-captured 1/2" plywood, light maple veneer interior with hanging rail.

## Braces

Full depth I-Beam braces provide support and stability.

## Drawer Guides

Blum undermount full extension soft close drawer guides with four-dimensional adjustment.

## Adjustable Shelves

3/4" thick light maple veneer plywood shelves.

## Sides

1/2" plywood with light maple veneer interior. Matching stain or paint exterior as specified.

## Drawers

5/8" thick solid maple dovetail drawer box with 1/4" thick plywood light maple veneer bottom.

## Face Frames

3/4" thick solid wood with 1 1/2" wide stiles and rails. Face frames are assembled with adhesive and pocket screws.

## Hinges

Blum 6 way adjustable soft close door hinges.

## Toe Kicks

4 1/2" high x 3 1/2" deep.

## Floors

1/2" plywood with light maple veneer interior.





# **HARDWOOD INTERIOR DESIGN**

1342 W. Plymouth St.  
Bremen, IN 46506

P: 574-546-2052

[www.cabnova.com](http://www.cabnova.com)

