

APRIL 2025

# Genesis Series

---

BY GREEN FOREST

[WWW.GREENFORESTCABINETRY.COM](http://WWW.GREENFORESTCABINETRY.COM)



# GREEN FOREST CABINETS

## TABLE OF CONTENTS

Samples & Sales Materials .....	4
Warranty & Policy Information .....	66
<b>Cabinetry .....</b>	<b>5</b>
Cabinet Specifications .....	5
Door Style Options.....	7
Rev-A-Shelf Options.....	12
Wall Cabinets.....	14
Wood Hoods.....	22
Base Cabinets .....	25
Tall Cabinets .....	33
Vanity Cabinets.....	36
<b>ADA Cabinetry .....</b>	<b>39</b>
Cabinet Specifications .....	39
Door Style Options.....	39
ADA Base Adaptable Cabinets .....	41
ADA Base Cabinets.....	42
ADA Vanity Adaptable Cabinets .....	44
ADA Vanity Cabinets .....	46
Accessories .....	47
<b>Trim, Moulding, Accessories &amp; Hardware.....</b>	<b>48</b>
Door & End Panels .....	49
Trim & Moulding.....	53
Roll Out Shelves.....	59
Accessories .....	60
Hinges & Specialty Hardware .....	64

### Green Forest Contact Info



- Customer Service Email: **williamsorders@wmsdist.com**
- Customer Service Phone: **800-748-0503**

### Shortages / Damages

- Orders are considered complete unless items are missing or have visible shipping damage. Missing or damaged items must be noted on the shipping receipt and signed by both the driver and the recipient.
- It is the dealer's responsibility to notify **Williams Distributing** of any missing or damaged items within 24 hours of accepting the delivery by email at **williamsorders@wmsdist.com**.
  - Verbal damage or shortage notifications are not accepted.
  - Digital photographs must accompany all claims of hidden damage.
  - Any orders accepted and signed for by the customer without any notice of damage or shortages will be considered complete.
- All items that have been installed and/or are not in their original packaging cannot be claimed as damaged.

GREEN FOREST CABINETRY

SAMPLE BASE



Green Forest  
Base Cabinet Sample  
12" W x 34.5" T x 18" D,  
with 1 adjustable shelf

SAMPBASE  
60 NET

SAMPLE FACE FRAME DOOR



Green Forest  
Sample Face Frame & Door  
12" x 23½"

SAMPFFDOOR  
20 NET

Sample shows Park Place White

SAMPLE DOOR



Green Forest  
Sample Door, no face frame  
12" x 15"

SAMPDOOR  
15 NET

Sample shows Park Place White

TRIM SAMPLE KIT



Box of Moulding Samples  
Includes 1 piece each of WHITE  
CBACK XL, CR1, CR2, CR3, FBD5, FBS5,  
ICM, LRAIL, LRAIL-D, LRAIL-S, OCM,  
SCRIBE, SHOE, QROUND  
*Available in White only*

TRIMSAMPKIT  
30 NET

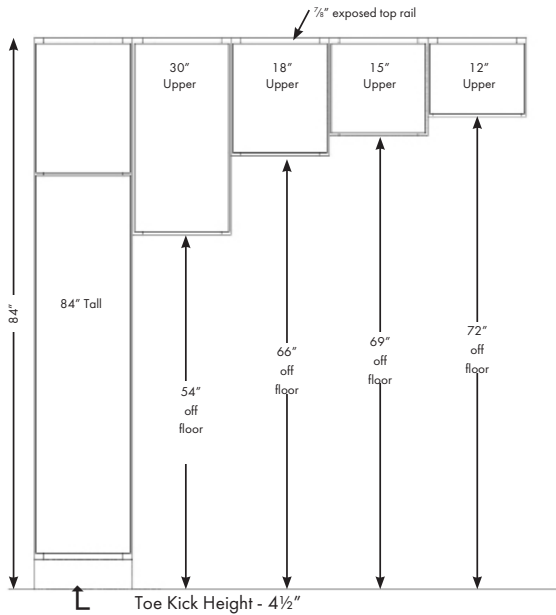
COLOR SAMPLE BLOCK



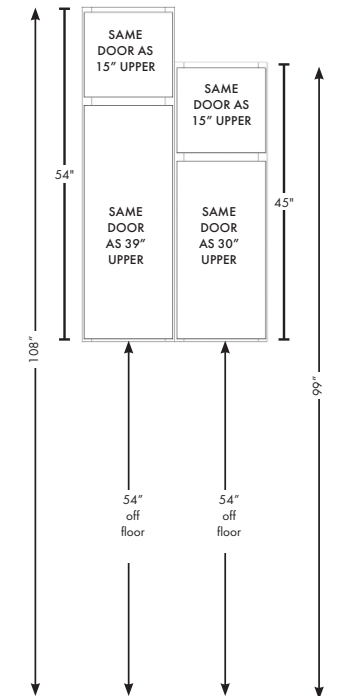
Green Forest  
4¾" x 6" color sample

SBLOCK  
3 NET

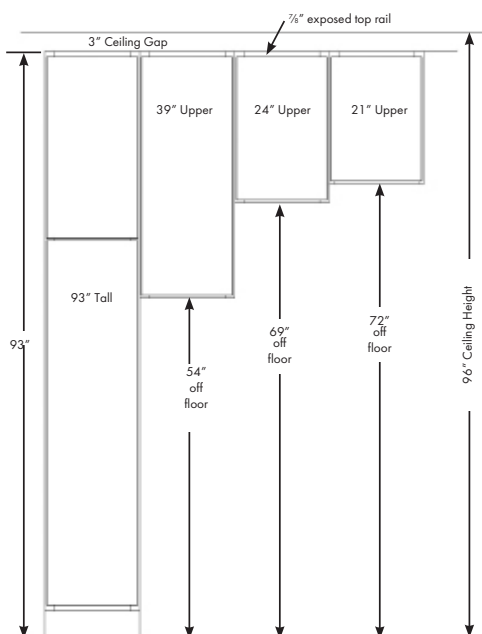
## TALL / SOFFIT 7' APPLICATION



## 45" AND 54" WALL CABINETS



## TALL / CEILING 8' APPLICATION



## Better Design with Advantage 39

*39" Wall Cabinets give you an advantage over the competition!*

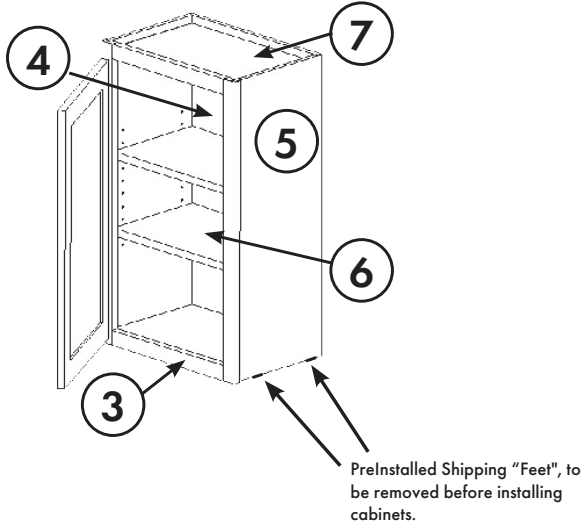
### 8' Ceiling Application

- Looks more professional
- 7/8" cabinet top reveal allows for easy trimming to ceiling with 1 piece of moulding
- Reduces installation cost

### 9' Ceiling Application

- Looks more professional
- 7/8" cabinet top reveal allows for easy trimming to ceiling with 1 piece of moulding
- Leaves the proper 12" space to ceiling
- Reduces installation cost
- Reduces material cost

## GREEN FOREST CABINETRY

**1. Doors**

- Mortise and tenon solid wood stiles and rails.
- Painted doors mortise and tenon made from MDF.

**2. Hinges**

- Soft-Close concealed hinge with 107° opening.

**3. Face Frame**

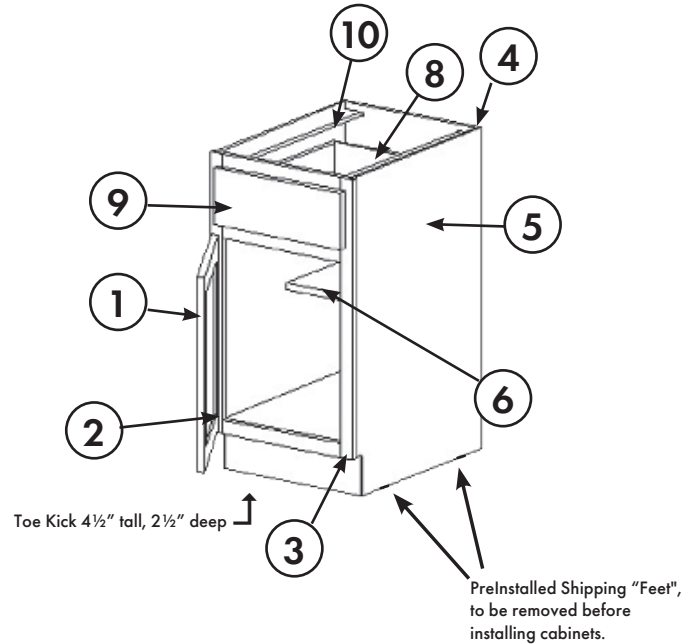
- $\frac{3}{4}$ " x  $1\frac{1}{2}$ " solid wood mortise and tenon.
- Comes pre-drilled for hinges Left and Right

**4. Backs**

- $\frac{1}{2}$ " select birch veneer plywood.
- Ultraviolet clear finish.

**5. Side Panels**

- $\frac{1}{2}$ " maple laminate furniture board.
- Ultraviolet clear finish inside cabinet
- Exterior matches the frame and door.

**6. Adjustable Shelving**

- $\frac{3}{4}$ " maple laminate furniture board with matching front edge banding.
- Base cabinet shelf depth  $15\frac{5}{16}$ ".

**7. Tops and Bottoms**

- $\frac{1}{2}$ " maple laminate furniture board.
- Ultraviolet clear finish.

**8. Drawer Boxes**

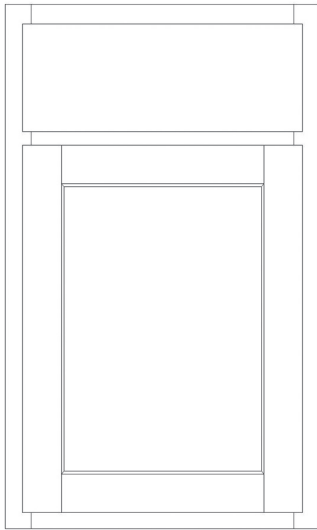
- Hybrid dovetail solid maple.
- $\frac{1}{2}$ " plywood bottoms
- Undermount soft close full extension drawer slides.

**9. Drawer Box Interior Depth**

- $3\frac{3}{8}$ " interior top drawer functional depth.
- Deeper than most competitors.

**10. Panel Beams**

- $\frac{1}{2}$ " thick x  $2\frac{1}{4}$ " furniture board panel beams.



### BELLA PLUS

### Price Code

### Color Specification

1

Smoked Cashew (CS)

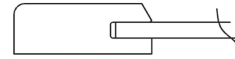
White Painted (WH)

Price column integrates soft close into list prices for hassle free upgrades of entire orders

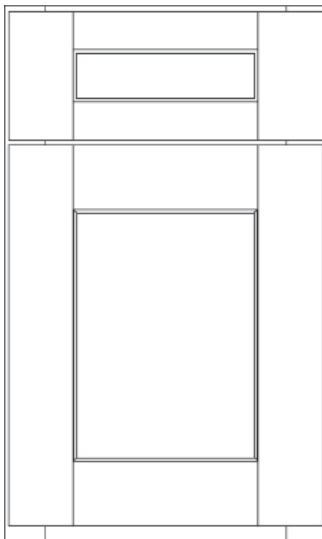
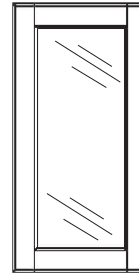
- 1/2" Overlay
- Door - 2 3/8" stile & rail
- Top and bottom are "back-beveled" for finger pull
- \*Depending on application, plywood components may contain MDF in accordance with ANSI/HPVA HP.1 Standards

#### Doors Prepped for Glass

- Supplied with acrylic panel
- Stiles and rails are 2 3/8"
- Available as 1-Lite
- Must use finished interior cabinet with glass door



Door rails are back beveled. Hardware is not required



### PARK PLACE

### Price Code

### Color Specification

2

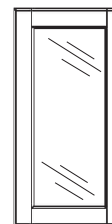
White Painted (WH)

Smoked Cashew (CS)

- 1 1/4" Overlay
- Drawer Pull mounting space = 2 7/8" tall
- Drawer Front - 3" stile, 2 1/8" rail

#### Doors Prepped for Glass

- Supplied with acrylic panel
- Rails are 3"
- Available as 1-Lite
- Must use finished interior cabinet with glass door



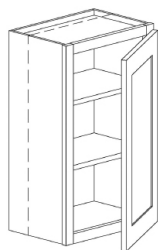
Cabinet Styles	Bella Plus		Park Place Door (PP)	
Color Options	White Painted (WH)	Smoked Cashew (CS)	Smoked Cashew (CS)	White Paint (WH)
Price Code	1		2	
Door & Drawer Front Construction	Drawer Front - Drawer Front-1 PC solid Door - 5 Pcs Mortise and Tenon		Drawer Front & Door 5 Pcs Mortise & Tenon	
Door Frame	2 3⁄8" MDF	2 3⁄8" Solid Maple	3" Solid Maple	3" MDF
Door Center	1⁄4" MDF	1⁄4" Maple Veneer Plywood *	3⁄8" Maple Veneer Plywood *	3⁄8" MDF
Door Overlay	1⁄2" Standard Overlay		1 1⁄4" Full Overlay - Left & Right - Top of wall, bottom of base and tall 7⁄8" reveal. Bottom of wall, top of base 3⁄8" reveal.	
Hinges	1⁄2" Overlay 6-way adjustable concealed soft close hinges with 107° opening.		1 1⁄4" Overlay 6-way adjustable concealed soft close hinges with 107° opening.	
Drawer Slides	Soft close, full extension, undermount. (75 lb. dynamic load, 100 lb. static load).			
Face Frame	3⁄4" X 1 1⁄2" Solid wood (Mortise and Tenon) *Pre-Drilled for hinges Left & Right*			
Cabinet Side	1⁄2" select furniture board interlocked into face frame			
Cabinet Top and Bottom	1⁄2" select furniture board with natural finish interlocked into back, sides and face frame.			
Interior	1⁄2" select furniture board with natural finish			
Back	1⁄2" select birch veneer plywood with natural finish interior, rabbeted into sides with dados for top and bottom			
Adjustable Shelves	3⁄4" select furniture board adjustable shelves with natural finish, 10 1⁄2" deep on wall, 15 5⁄16" deep on base.			
Drawer Box	Hybrid Dovetail; 5⁄8" solid maple - dovetail at front joint - rabbet at rear joint - natural finish			
	Bottoms - 1⁄2" bottom interlocked into drawer box sides - clear finish			

\*Depending on application, plywood components may contain MDF in accordance with ANSI/HPVA HP.1 Standards  
Note: Green Forest MDF can also be considered HDF



## Reduce Depth

Standard Lead Time



Description	SKU	Price
WALL (11", 10", 9", 8", 7", 6")	RD-W-___D	284
WALL REFRIGERATOR CABINET (21", 18", 15")	RD-WR-___D	284
WALL MICROWAVE CABINET (18", 15")	RD-WMC-___D	335
BASE FULL HEIGHT (21", 18", 15", 12") **BASE CLIP (BCLIP) CABINET CANNOT BE MODIFIED**	RD-BV0D-___D	284
BASE/VANITY WITH 1 DRAWER (21", 18", 15", 12")	RD-BV1D-___D	466
BASE/VANITY WITH 2 DRAWERS (21", 18", 15", 12")	RD-BV2D-___D	551
BASE/VANITY WITH 3 DRAWERS (21", 18", 15", 12")	RD-BV3D-___D	636
TALL PANTRY (21", 18", 15", 12", 9")	RD-T-___D	723

## Reduce Depth of Cabinet with Roll Out Shelves

Standard Lead Time

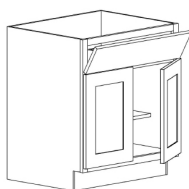


Description	SKU	Price
BASE/VANITY WITH 1 ROS (21", 18", 15")	RD-BV1D-1ROS-___D	568
BASE/VANITY SINK WITH 2 ROS (21", 18", 15")	RD-BV1D-2ROS-___D	670
BASE FULL HEIGHT WITH 1 ROS (21", 18", 15")	RD-BV0D-1ROS-___D	386
BASE FULL HEIGHT WITH 3 ROS (21", 18", 15")	RD-BV0D-3ROS-___D	590
TALL PANTRY WITH 5 ROS (21", 18", 15")	RD-T-5ROS-___D	1233

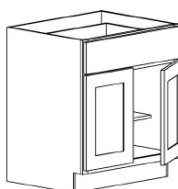
## Drawer Changes

Standard Lead Time

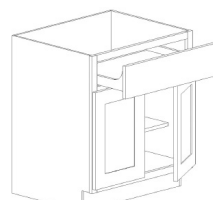
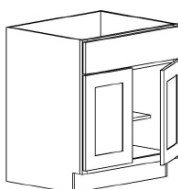
Description	SKU	Price
ADD A FACTORY INSTALLED <b>TILT OUT TRAY</b> SEE ADDITIONAL INSTALLATION NOTE ON PAGE 67	ADD-TOTRAY	216
REMOVE <b>TOP DRAWER BOX</b> – CREATE FALSE FRONT	REM-TOPDBOX	182
<b>SCOOP TOP DRAWER</b> REDUCE HEIGHT BY 2" (YIELDS 4 1/4" CLEARANCE)	CHG-SCOOPD	284
<b>DRAWER BOX DEPTH REDUCTION</b> (21", 18", 15")	RD-1DWR-___D	102
REMOVE 1 ROLL OUT SHELF FROM 5 ROLL OUT SHELF PANTRY	REM-1ROS	0



Install Tilt Out Tray



Remove Top Drawer Box



Scoop Top Drawer

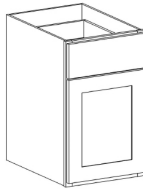
Scoop Drawer Height	
A Drawer:	2 3/8"
B Drawer:	3 3/8"
C Drawer:	8 3/8"

## CUSTOM MADE AFFORDABLE

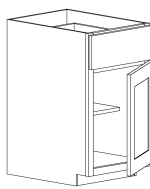
### Toekick Changes

Standard Lead Time

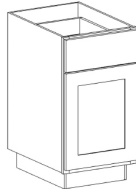
Description	SKU	Price
Loose Toe Available. See pg 33 <b>REMOVE 4½" TOE SPACE</b>	REM-TKICK	182
<b>REDUCE HEIGHT OF TOE KICK TO 2½"</b>	RH-TKICK	182
<b>ADD 4½" TOE SPACE LEFT</b>	ADD-TKLEFT	223
<b>ADD 4½" TOE SPACE RIGHT</b>	ADD-TKRIGHT	223
<b>ADD 4½" TOE SPACE BOTH SIDES</b>	ADD-TKLANDR	223



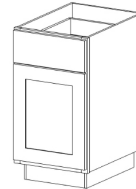
Remove Toe Space



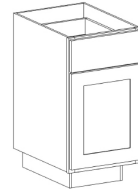
Reduce Height Toekick



Add Toekick Left



Add Toekick Right

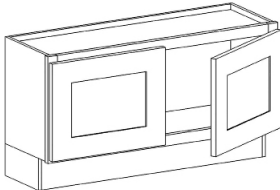


Add Toekick to Both Sides

### Add Toekick To Wall Cabinet

*Great for creating window seats!*

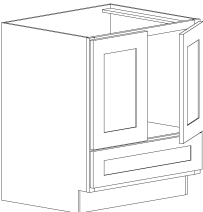
Standard Lead Time



Description	SKU	Price
<b>ADD TOEKICK TO WALL CABINET</b>	ADD-TOEKICK	335

### Invert Base/Vanity Cabinet

Standard Lead Time

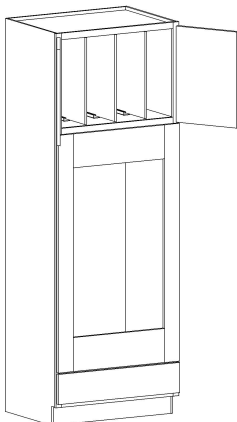


Description	SKU	Price
<b>INVERT BASE/VANITY</b>	INVERT-BV	140

- Not available in Bella

### Insert Vertical Divider

Standard Lead Time



Description	SKU	Price
<b>INSERT VERTICAL DIVIDER TO WR/OC/TP</b>	INSERT-DIV	276

- Only available for refrigerator walls, oven cabinets, and pantry cabinets
- Adds 3 vertical Dividers

## Upgrade Drawer Guides from Standard, Full Extension to Blum Soft Close

Standard Lead Time

Description	SKU	Price
<b>1 BASE DRAWER SLIDE - TO BLUM SOFT CLOSE (PER DRAWER)</b> (IE: STANDARD BASE)	UG-HHB-BLM1D	80
<b>2 BASE DRAWER SLIDES - TO BLUM SOFT CLOSE (PER DRAWER)</b> (IE: STANDARD B42)	UG-HHB-BLM2D	160
<b>3 BASE DRAWER SLIDES - TO BLUM SOFT CLOSE (PER DRAWER)</b> (IE: STANDARD BD312)	UG-HHB-BLM3D	240
<b>1 VANITY DRAWER SLIDE - TO BLUM SOFT CLOSE (PER DRAWER)</b> (IE: STANDARD VANITY)	UG-HHV-BLM1D	80
<b>2 VANITY DRAWER SLIDES - TO BLUM SOFT CLOSE (PER DRAWER)</b> (IE: STANDARD VCOMBO)	UG-HHV-BLM2D	160
<b>3 VANITY DRAWER SLIDES - TO BLUM SOFT CLOSE (PER DRAWER)</b> (IE: STANDARD VD312)	UG-HHV-BLM3D	240



## Roll Out Shelf Guide Upgrade

Standard Lead Time

Slide Sizes		
Cabinet	Slide Size (metric)	Slide Size (English)
24"	533mm	21"
21"	457mm	18"
18"	381mm	15"
15"	305mm	12"
12"	229mm	9"

Description	SKU	Price
<b>1 ROS SLIDE TO BLUM SLIDES</b> (CABINET DEPTH 24", 21", 18", 15", 12")	UG-1ROS-BLM-____D	80
<b>2 ROS SLIDE TO BLUM SLIDES</b> (CABINET DEPTH 24", 21", 18", 15", 12")	UG-2ROS-BLM-____D	160
<b>3 ROS SLIDE TO BLUM SLIDES</b> (CABINET DEPTH 24", 21", 18", 15", 12")	UG-3ROS-BLM-____D	240
<b>5 ROS SLIDE TO BLUM SLIDES</b> (CABINET DEPTH 24", 21", 18", 15", 12")	UG-5ROS-BLM-____D	400

## GREEN FOREST CABINETRY



ITEMS WILL BE INSTALLED INTO CABINETS UPON ORDERING

- FOR ORDERING INDIVIDUALLY, ADD "-A" TO THE SKU

### BASE BLIND WOOD HALF MOON



Description	SKU	Price
FITS IN <b>BB39-45</b>	BBMOON-39	1301
FITS IN <b>BB42-48</b>	BBMOON-42	1430

### DOOR MOUNTED STORAGE

AVAILABLE ON RIGHT OR LEFT DOOR



Description	SKU	Price
FITS IN <b>B15, B30</b>	DSTOR-15	240
FITS IN <b>B18, B36</b>	DSTOR-18	261
FITS IN <b>B21, B42</b>	DSTOR-21	301

### DOOR MOUNTED APPLIANCE STORAGE

AVAILABLE ON RIGHT OR LEFT DOOR



Description	SKU	Price
FITS ANY <b>15" DOOR OR LARGER</b>	DMAS-24	250

BASE/VANITY - 15, 18, 21, 30, 36, 42  
VCOMBO - 36, 42, 48 (WILL NOT WORK WITH ROLL OUT SHELF)

### DOOR MOUNTED ADJUSTABLE SPICE RACK

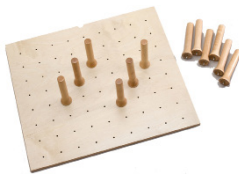
AVAILABLE ON RIGHT OR LEFT DOOR



Description	SKU	Price
FITS IN <b>W15, W30</b>	ASR-15	364
FITS IN <b>W18 &amp; W36</b>	ASR-18	417
FITS IN <b>W21 &amp; W42</b>	ASR-21	546

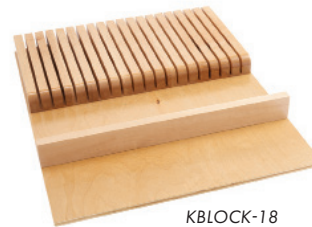
### PEG SYSTEM

PEG SYSTEM CAN ONLY BE USED IN BOTTOM 2 DRAWERS OF BASE DRAWER STACK OR BASE CABINET, WITH OR WITHOUT ROLL OUTS.



Description	SKU	Price
FITS IN <b>BD24</b>	PEGS-24	266
FITS IN <b>BD30</b>	PEGS-30	312
FITS IN <b>BD36</b>	PEGS-36	390

### KNIFE BLOCK INSERT



KBLOCK-18  
(TRIMMABLE)

KBLOCK-18

Description	SKU	Price
FITS IN <b>B21 OR SMALLER</b>	KBLOCK-18	281

### BASE UTENSIL PULL OUT



Description	SKU	Price
FITS IN <b>BFH9</b>	BUPO9-INS	1483

### MIXER LIFT - BASE



Description	SKU	Price
FITS IN <b>BFH18</b>	MXLIFT-18	1352



ITEMS WILL BE INSTALLED INTO CABINETS UPON ORDERING

REV-A-SHELF

TIERED CUTLERY DIVIDER



Description	SKU	Price
FITS IN <b>B18</b>	2TCUT-18	820

CHARGING DRAWER



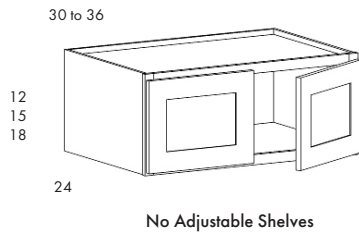
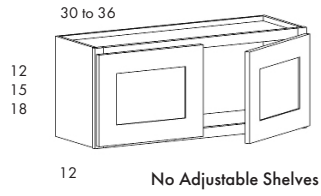
Description	SKU	Price
FITS IN <b>B18</b>	DRCHRG-18	1575

DEEP DRAWER DIVIDER



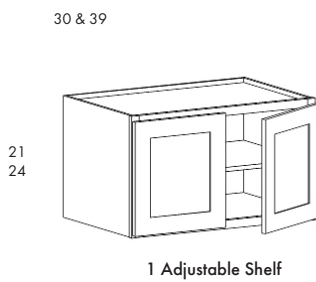
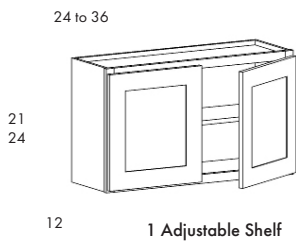
Description	SKU	Price
FITS IN <b>BD324</b>	DRAWDIV-DEEP24	960
FITS IN <b>BD330</b>	DRAWDIV-DEEP30	1100
FITS IN <b>BD336</b>	DRAWDIV-DEEP36	1280

12", 15", 18" HIGH WALL

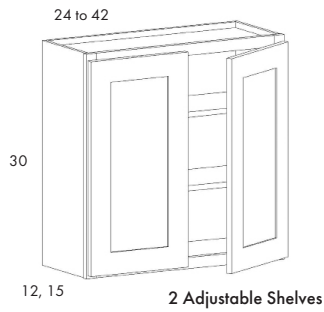
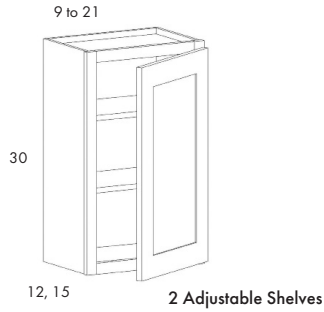


SKU	1	2
W3012	236	256
W3312	263	285
W3612	280	305
W2415	236	256
W3015	265	287
W3315	284	309
W3615	302	331
W3018	314	339
W3618	366	398
WR2415	395	438
WR3012	395	438
WR3312	395	438
WR3612	371	406
WR3015	395	438
WR3315	395	438
WR3615	395	438
WR3018	395	438
WR3618	395	438

21" & 24" HIGH WALL



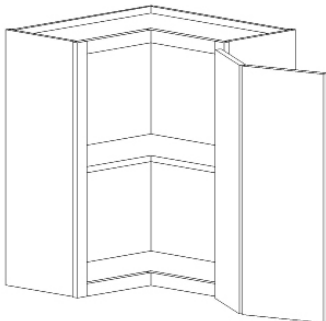
SKU	1	2
W3021	337	384
W3321	380	435
W3621	397	454
*W3921	432	498
W2424	333	396
W3024	358	413
W3624	410	472
WR3021	395	438
WR3321	395	438
WR3621	440	536
WR3921	486	580
WR3024	440	536
WR3624	486	580

**30" HIGH WALL**

SKU	1	2
W0930	208	230
W1230	241	268
W1530	270	302
W1830	302	338
W2130	333	372
W2430	370	408
W2730	401	442
W3030	430	478
W3330	462	513
W3630	490	549
*W4230	554	•
W0930-15D	310	346
W1230-15D	358	403
W1530-15D	404	454
W1830-15D	449	506
W2130-15D	495	558
W2430-15D	548	612
W2730-15D	594	664
W3030-15D	640	717
W3330-15D	685	770
W3630-15D	733	823

\* 42" cabinet has center stile between door

- Extra shelves are available in the Accessories section.

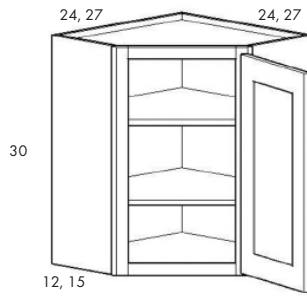
**30" WALL EASY REACH**

SKU	1	2
WER2430	564	627

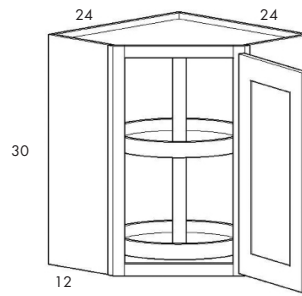


### 30" HIGH DIAGONAL CORNER

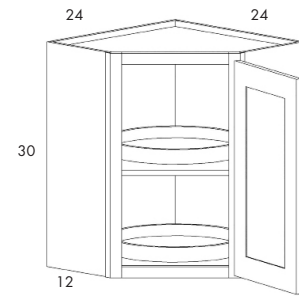
SKU	1	2
WDC2430	506	554
*WDC2730-15D	706	775
WLS2430-PT	702	750
WLS2430-WD	1022	1070



Wall Diagonal Corner  
2 Adjustable Shelves



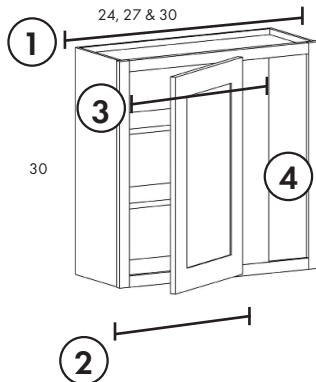
Wall Lazy Susan  
with Polymer Trays (PT)



Wall Lazy Susan  
with Wood Trays (WD)

### 30" HIGH BLIND WALL

SKU	1	2
WB2430BL/BR	348	372
WB2730BL/BR	378	408
WB3030BL/BR	408	440

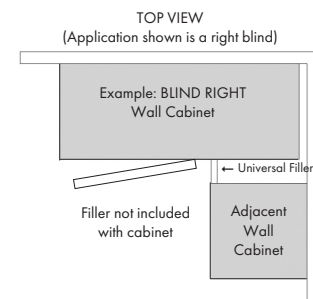


• Shown Blind Right  
2 Adjustable Shelves

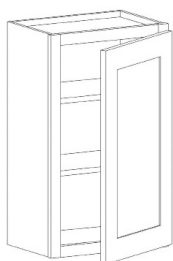
- Can be used as left or right blind
- Vertical center stile is 8 1/8" wide

Cabinet Type	Cab ID	(1) Actual Cabinet	(2) *Cab Face Size	(3) Frame Opening at Cab. Face	(4) Max Exposed Stile	Min pull	Max Pull
Bella	WB2430	24"	12"	9"	7"	1"	6"
	WB2730	27"	15"	12"	7"	1"	6"
	WB3030	30"	18"	15"	7"	1"	6"
All Other Framed Doors	WB2430	24"	12"	9"	6 1/4"	1"	6"
	WB2730	27"	15"	12"	6 1/4"	1"	6"
	WB3030	30"	18"	15"	6 1/4"	1"	6"

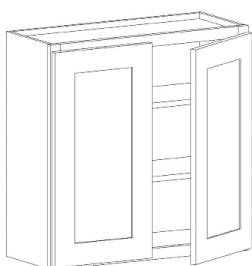
Face size of 12 means door and frame are same size as W1230



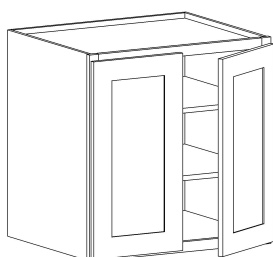


**30" HIGH WALL**

2 Adjustable Shelves



2 Adjustable Shelves



SKU	A+	C	E
W0930	260	288	317
W1230	301	335	366
W1530	338	378	415
W1830	377	422	461
W2130	416	465	509
W2430	462	510	558
W2730	501	553	606
W3030	538	597	653
W3330	577	641	701
W3630	613	686	748
*W4230	693	•	•
WR2730	608	725	808
WR3030	608	725	808
W0930-15D	388	432	485
W1230-15D	447	504	560
W1530-15D	505	567	636
W1830-15D	561	633	704
W2130-15D	649	697	779
W2430-15D	685	765	856
W2730-15D	742	830	927
W3030-15D	800	896	1000
W3330-15D	856	963	1058
W3630-15D	916	1029	1130

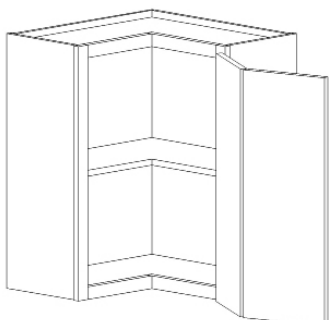
\*42" cabinet has center stile between door

- Extra shelves are available in the Accessories section.

**30" WALL EASY REACH**

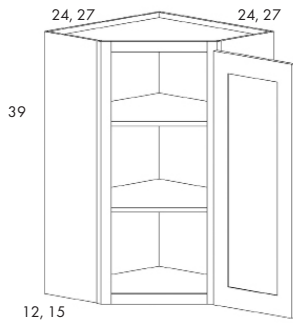
SKU	A+	C	E
WER2430	705	784	•

- Not available in Sierra

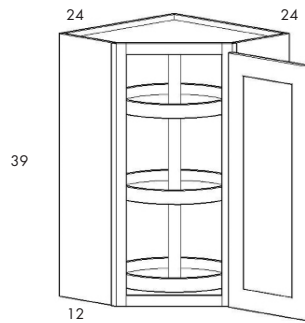


### 39" HIGH DIAGONAL CORNER

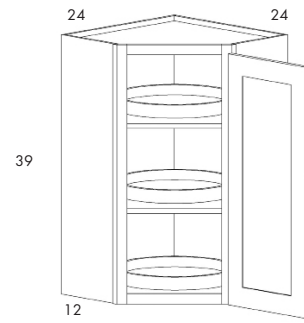
SKU	1	2
WDC2439	658	718
*WDC2739-15D	917	1006
WLS2439-PT	1030	1091
WLS2439-WD	1433	1494



Wall Diagonal Corner  
2 Adjustable Shelves  
3 hinges



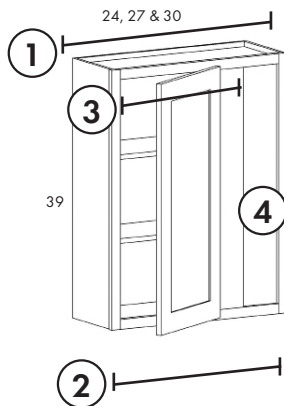
Wall Lazy Susan  
with Polymer Trays (PT)  
3 hinges



Wall Lazy Susan  
with Wood Trays (WD)  
3 hinges

### 39" HIGH BLIND WALL

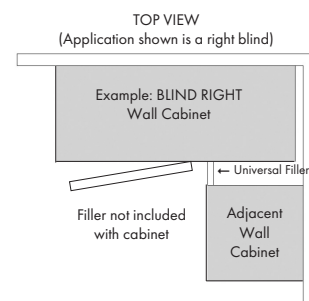
SKU	1	2
WB2439BL/BR	422	454
WB2739BL/BR	463	497
WB3039BL/BR	495	534



- Shown as Blind Right

2 Adjustable Shelves

- Can be used as left or right blind
- Vertical center stile is 8 1/8" wide



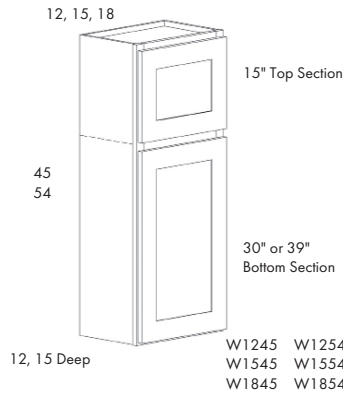
Cabinet Type	Cab ID	(1) Actual Cabinet	(2) *Cab Face Size	(3) Frame Opening at Cab. Face	(4) Max Exposed Stile	Min pull	Max Pull
Bella	WB2439	24"	12"	9"	7"	1"	6"
	WB2739	27"	15"	12"	7"	1"	6"
	WB3039	30"	18"	15"	7"	1"	6"
All Other Framed Doors	WB2439	24"	12"	9"	6 1/4"	1"	6"
	WB2739	27"	15"	12"	6 1/4"	1"	6"
	WB3039	30"	18"	15"	6 1/4"	1"	6"

Face size of 12 means door and frame are same size as W1239

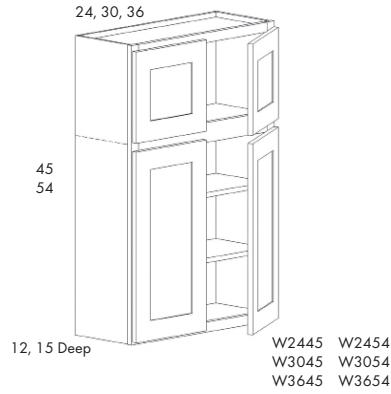


## Door Over Door Cabinets

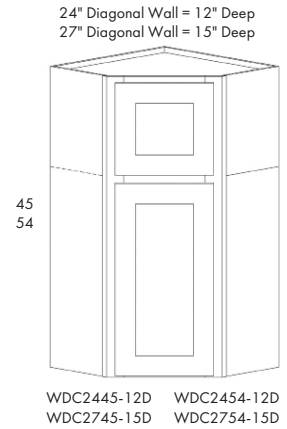
- ~ Available in Park Place ONLY
- ~ Glass Doors automatically include matching finished interior - FIM
- ~ All drawings are with standard doors (Face Type 1). For Glass Door options, see Face Type 2 - 4
- ~ Skins ordered separately



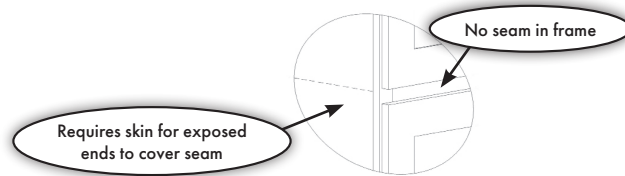
Shows F1



Shows F1

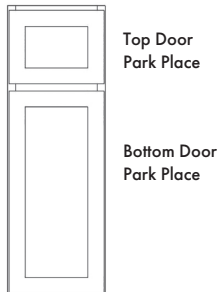


Shows F1

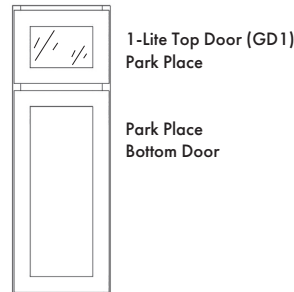


## Door Over Door Cabinet Face Options

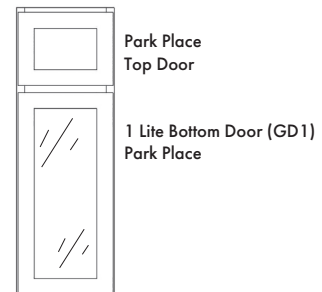
Face 1 (F1)



Face 2 (F2)



Face 3 (F3)

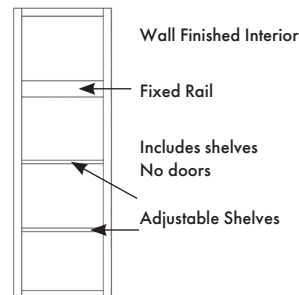


Face 4 (F4)



Face 7 (F7)

Available in White and Smoked Cashew



Part Number Structure: IE: W1545-F1-12D

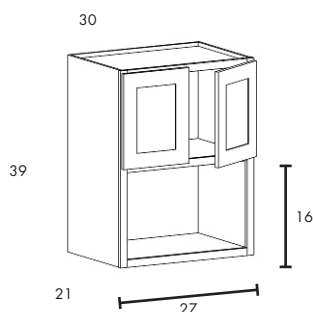
45" TALL	FACE 1 (F1)	FACE 2 (F2)	FACE 3 (F3)	FACE 4 (F4)	FACE 7 (F7)
W1245-____-12D	864	1241	1241	1619	760
W1545-____-12D	907	1284	1284	1661	798
W1845-____-12D	951	1328	1328	1706	837
W2445-____-12D	1095	1850	1850	2605	964
W3045-____-12D	1126	1881	1881	2635	990
W3645-____-12D	1269	2023	2023	2778	1116
WDC2445-____-12D	1381	1758	1758	2136	1214
W1245-____-15D	1209	1587	1587	1964	1065
W1545-____-15D	1269	1646	1646	2023	1116
W1845-____-15D	1332	1709	1709	2086	1172
W2445-____-15D	1454	2209	2209	2964	1279
W3045-____-15D	1576	2331	2331	3086	1388
W3645-____-15D	1775	2530	2530	3285	1561
WDC2745-____-15D	1933	2311	2311	2688	1700
54" TALL	FACE 1 (F1)	FACE 2 (F2)	FACE 3 (F3)	FACE 4 (F4)	FACE 7 (F7)
W1254-____-12D	963	1340	1420	1797	847
W1554-____-12D	1020	1398	1478	1855	898
W1854-____-12D	1077	1454	1534	1911	947
W2454-____-12D	1192	1947	2107	2862	1049
W3054-____-12D	1308	2063	2222	2977	1151
W3654-____-12D	1476	2231	2391	3145	1299
WDC2454-____-12D	1741	2119	2199	2576	1532
W1254-____-15D	1347	1724	1804	2182	1185
W1554-____-15D	1428	1806	1886	2263	1257
W1854-____-15D	1507	1884	1964	2341	1326
W2454-____-15D	1668	2423	2583	3338	1468
W3054-____-15D	1831	2586	2746	3501	1612
W3654-____-15D	2066	2821	2981	3735	1818
WDC2754-____-15D	2438	2816	2896	3273	2145

## WALL 54 SKINS (CAN BE FIELD CUT FOR 45 WALL)

	SKU	PRICE
¼" X 11 ¼" X 54"	W5412SKIN	75
¼" X 14 ¼" X 54"	W5415SKIN	126



## WALL MICROWAVE CABINET



## SKU

## 1

## 2

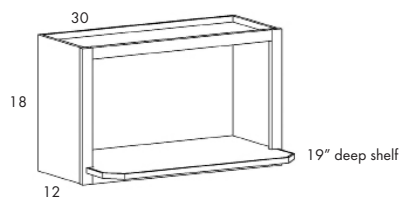
WMC3039

999

1039

- Interior of cabinet matches cabinet color
- Can be modified to 15" or 18" deep
- \*Use caution when installing adjacent to diagonal wall

## WALL MICROWAVE SHELF



## SKU

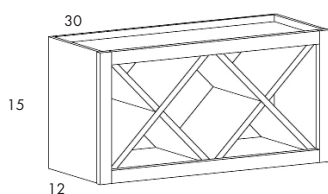
## PRICE

WMS3018

473

- \*If utilizing the microwave shelf adjacent a WDC or WLS, a 3" filler is required for door swing.
- Finished interior
- Opening height 14½"
- Opening width 27"

## NAPA VALLEY WINE CABINET



## SKU

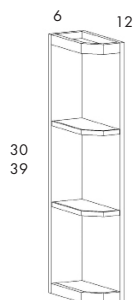
## PRICE

WINE3015

728

- Holds 10 750ml. wine bottles
- Note: Top and bottom outside are natural birch finish. If using cabinet vertically, extra panels will need to be ordered to cover.

## WALL OPEN END SHELF



## SKU

## PRICE

WOS0630

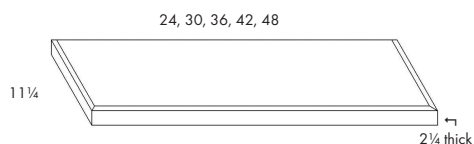
425

WOS0639

493

- Can be left or right, flipped

## FLOATING SHELF WITH HARDWARE



- Not available in Ivory
- Kit includes 1 shelf and mounting hardware
- 2½" Thick plywood shelf with finished top and bottom. Soft top edge radius 1 long and 2 short edges.
- Designed to support 50 pounds.

## SKU

## UN

## PRICE

FLTSHELF24

301

354

FLTSHELF30

330

388

FLTSHELF36

359

422

FLTSHELF42

388

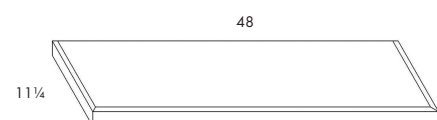
456

FLTSHELF48

417

490

## 2" THICK SHELF KIT (CABINET TO CABINET)



## SKU

## PRICE

SHELF1PC2X48

286

- 2" Thick shelf with finished top and bottom. Soft top edge radius 1 long and 2 short edges - constructed of plywood with a ¾" x 2" solid wood band on 3 edges.
- Trimmable to desired length and depth.
- Meant to be installed between 2 cabinets or a cabinet and a wall. Not meant to be floating shelves
- Kit includes 1 shelf



## WOOD HOODS

- Available in all colors
- Removable Upper Access for easy install
- Stainless Steel Liners included - Shipped loose - (see compatibility table)
- Hoods include 14" Chimney Attachment

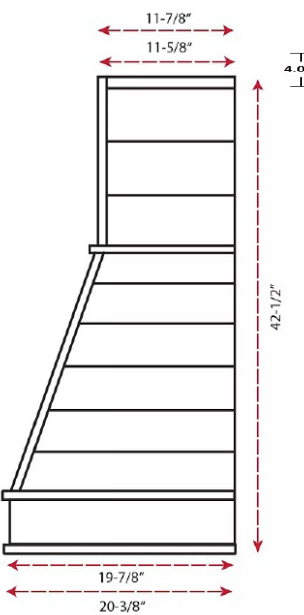
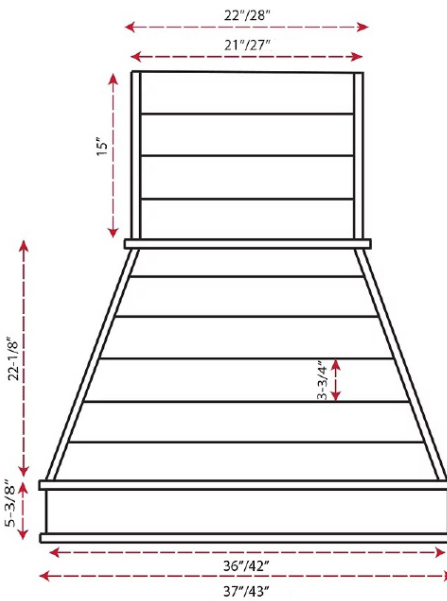
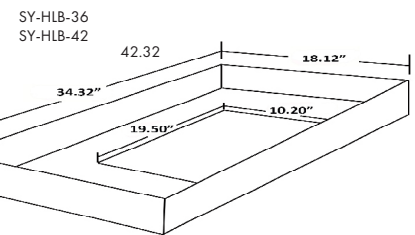
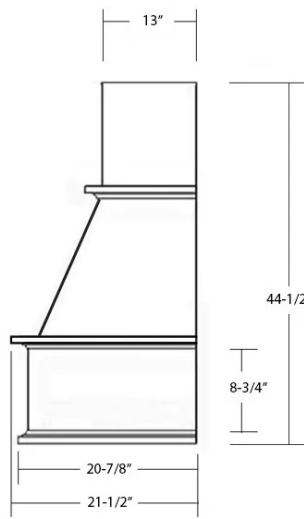
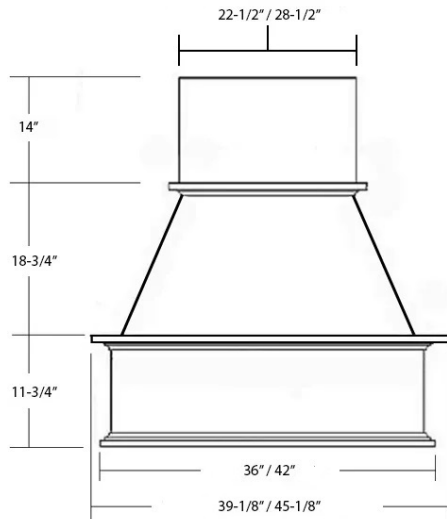
## SKU

## DESCRIPTION

## UNFINISHED LIST PRICE

## FINISHED LIST PRICE

HDCH-TR36	TRADITIONAL CHIMNEY RANGE HOOD 36" WIDE	4821	5672
HDCH-TR42	TRADITIONAL CHIMNEY RANGE HOOD 42" WIDE	5136	6042
HDCH-SL36	SHIPLAP CHIMNEY RANGE HOOD 36" WIDE	6048	7116
HDCH-SL42	SHIPLAP CHIMNEY RANGE HOOD 42" WIDE	6383	7509



## CHIMNEY EXTENSIONS

## SKU

## DESCRIPTION

## UNFINISHED LIST PRICE

## FINISHED LIST PRICE

EXTHD-TR36	24"X36" TRADITIONAL CHIMNEY EXTENSION (COMPATIBLE WITH HDCH-TR36)	407	479
EXTHD-TR42	24"X42" TRADITIONAL CHIMNEY EXTENSION (COMPATIBLE WITH HDCH-TR42)	469	552
EXTHD-SL36	24"X36" SHIP LAP CHIMNEY EXTENSION (COMPATIBLE WITH HDCH-SL36)	445	524
EXTHD-SL42	24"X42" SHIP LAP CHIMNEY EXTENSION (COMPATIBLE WITH HDCH-SL42)	509	599

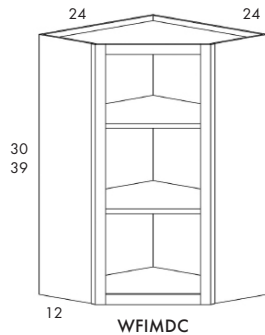
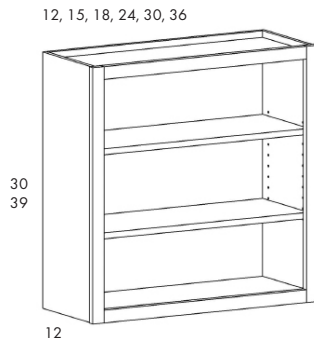
## COMPATIBLE BLOWERS

**PM300SS** | BROAN 300CFM VENTILATOR  
**PM400SS** | BROAN 400CFM VENTILATOR  
**PM600SSV** | BROAN 600CFM VENTILATOR

**SY-HVA-350-SS** | ASCENSION ECONOMY 350CFM VENTILATOR  
**SY-HVA-500-SS** | ASCENSION 500CFM VENTILATOR  
**SY-HVA-620-SS** | ASCENSION 620CFM VENTILATOR



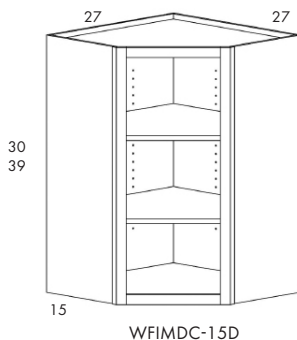
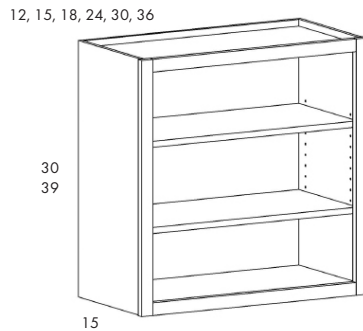
### 30" - 39" HIGH 12" DEEP FINISHED INTERIOR (FIM) WALL OPEN



SKU	PRICE
WFIM1230	544
WFIM1530	544
WFIM1830	604
WFIM2430	675
WFIM3030	755
WFIM3630	896
WFIM1239	633
WFIM1539	633
WFIM1839	694
WFIM2439	776
WFIM3039	852
WFIM3639	1022
WFIMDC2430	1269
WFIMDC2439	1369

- 2 Finished wood shelves included
- Additional shelves available in Accessories section
- Glass Doors are not included. See next page for Glass Door options.
- Not available in Blue, Green, Midnight

### 30" - 39" HIGH 15" DEEP - FINISHED INTERIOR (FIM) WALL OPEN



SKU	PRICE
WFIM1230-15D	769
WFIM1530-15D	769
WFIM1830-15D	845
WFIM2430-15D	947
WFIM3030-15D	1060
WFIM3630-15D	1253
WFIM1239-15D	901
WFIM1539-15D	901
WFIM1839-15D	981
WFIM2439-15D	1099
WFIM3039-15D	1206
WFIM3639-15D	1444
WFIMDC2730-15D	1777
WFIMDC2739-15D	1927

- 2 Finished wood shelves included
- Additional shelves available in Accessories section
- Glass Doors are not included. See next page for Glass Door options.
- 15D only available in White

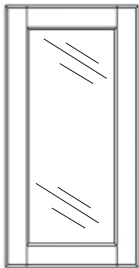


# FIM WALL DOORS

- Doors prepped for glass
- Shipped with clear, acrylic panel
- **Glass doors are NOT compatible with NON-FIM cabinets.**

Available in all door styles

- \* 3" Stiles and Rails for Park Place
- 2 3/8" Stiles and Rails for Bella



1-Lite Door

## 30" & 39" TALL 1-LITE DOOR

SKU	ALL COLORS
GD1-1230	208
GD1-1530	208
GD1-1830	274
*GD1-2430P	415
*GD1-3030P	415
*GD1-3630P	548
GD1-WDC2430	208

SKU	ALL COLORS
GD1-1239	288
GD1-1539	288
GD1-1839	380
*GD1-2439P	575
*GD1-3039P	575
*GD1-3639P	759
GD1-WDC2439	288

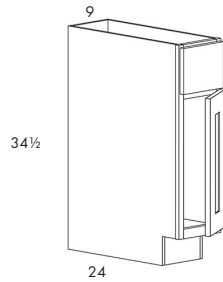
- \*P = pair. All part numbers with a P include 2 doors





## 9" – 48" BASE

B09



\*Face stiles are 1" wide, frame opening is 7". Functional width inside drawer box is 5 1/4".

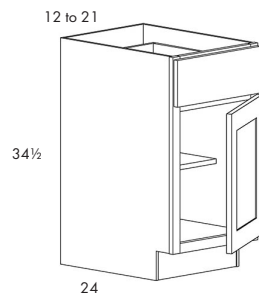
\*Utilizes 1" Face Frame stiles to maximize drawer box size.

\*CAUTION: 5 PC drawer fronts require use of knob (not handle) on B09s.

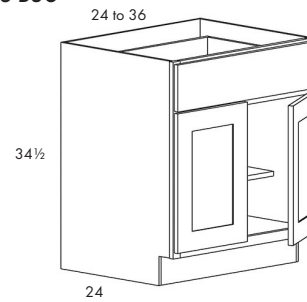
SKU	1	2
*B09	378	458
B12	378	458
B15	419	510
B18	457	554
B21	498	614
B24	543	662
B27	582	712
B30	622	763
B33	662	816
B36	702	868
B42	794	969
B48	886	1006

- 42 & 48 have center stile between doors
- 42 & 48 have fixed shelves

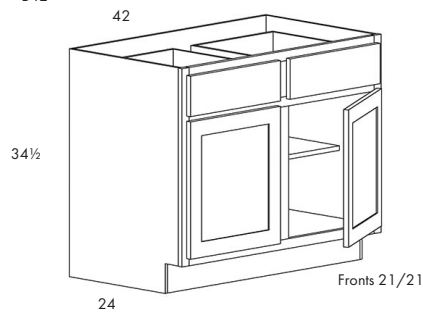
B12 to 21



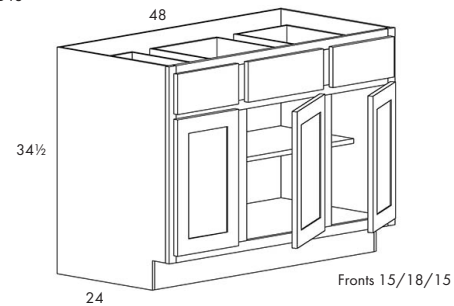
B24 to B36



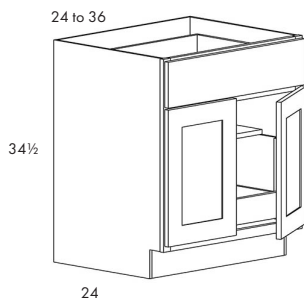
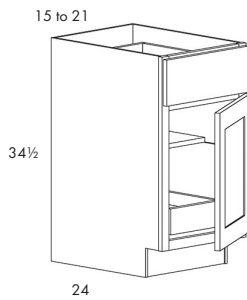
B42



B48



15" – 36" BASE  
WITH ROLL OUT SHELVES



SKU

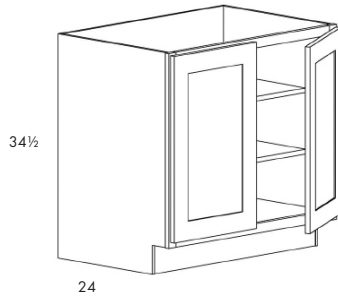
1

B15-1ROS	618	710
B18-1ROS	669	766
B21-1ROS	721	837
B24-1ROS	779	897
B27-1ROS	829	959
B30-1ROS	881	1022
B33-1ROS	933	1087
B36-1ROS	984	1150
B15-2ROS	775	866
B18-2ROS	838	934
B21-2ROS	900	1016
B24-2ROS	970	1088
B27-2ROS	1033	1163
B30-2ROS	1096	1237
B33-2ROS	1160	1314
B36-2ROS	1222	1387

- Base Cabinets with 1 ROS include 1 ROS and 1 15 5/8" deep shelf
- Reduce depth modification requires cabinet depth and roll out shelf to be modified
- ROS are adjustable - usable height set at factory is :  
Bottom ROS - 8"



## 9" – 36" BASE FULL HEIGHT

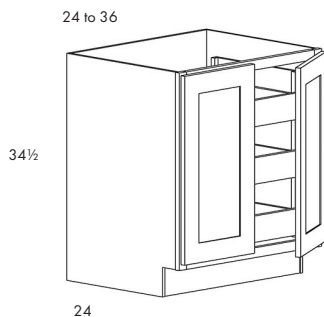
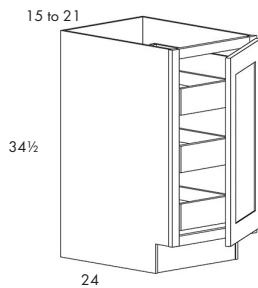


Adjustable Shelf Sizes			
Shelf	Width	Depth	Part #
12	10 1/4	22 1/4	ASK1224
15	13 1/4	22 1/4	ASK1524
18	16 1/4	22 1/4	ASK1824
21	19 1/4	22 1/4	ASK2124
24	22 1/4	22 1/4	ASK2424
27	25 1/4	22 1/4	•
30	28 1/4	22 1/4	ASK3024
33	31 1/4	22 1/4	•
36	34 1/4	22 1/4	ASK3624

SKU	1	2
*BFH09	278	318
BFH12	301	390
BFH15	338	435
BFH18	373	474
BFH21	410	528
BFH24	453	569
BFH27	489	615
BFH30	525	662
BFH33	562	707
BFH36	598	754

- BFH09 has no shelves
- BFH09-BFH21 have single door
- 2 full depth adjustable shelves included on BFH12-BFH36

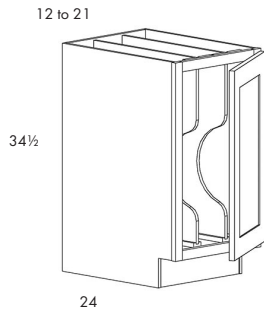
## 15" – 36" BASE FULL HEIGHT WITH 3 ROS



SKU	1	2
BFH15-3ROS	895	992
BFH18-3ROS	966	1066
BFH21-3ROS	1036	1154
BFH24-3ROS	1114	1231
BFH27-3ROS	1188	1314
BFH30-3ROS	1256	1393
BFH33-3ROS	1330	1476
BFH36-3ROS	1399	1555

- Reduce depth modification requires cabinet depth and roll out shelf to be modified
- ROS are adjustable

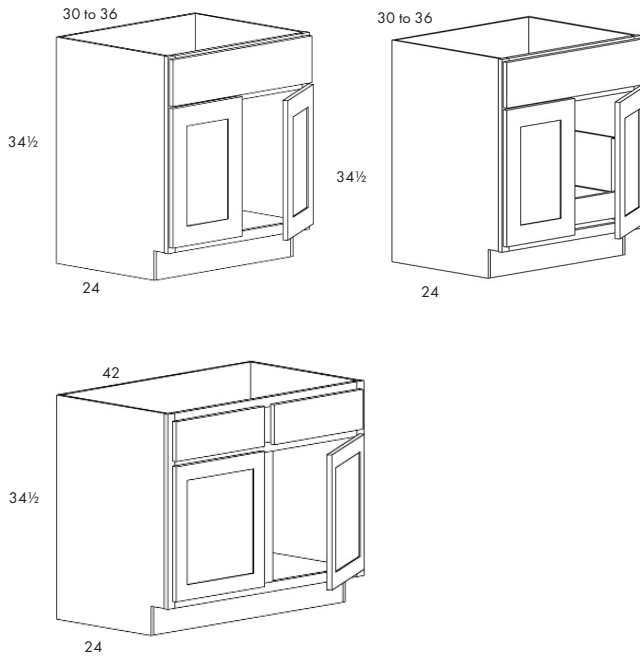
## 12-21" BASE FULL HEIGHT



SKU	1	2
BFHTD-12	430	517
BFHTD-15	468	565
BFHTD-18	631	730
BFHTD-21	669	785

- 12" and 15" cabinet have 1 Tray Divider
- 18" and 21" cabinet have 2 Tray Dividers

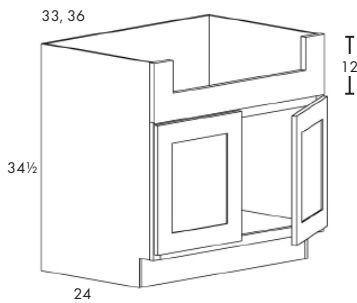
## BASE SINKS



SKU	1	2
BS24	477	536
BS27	515	562
BS30	525	592
BS33	557	630
BS36	576	650
BS42	643	716
BS24-1ROS	712	775
BS27-1ROS	762	815
BS30-1ROS	783	854
BS33-1ROS	828	906
BS36-1ROS	858	938

- 42 has Center Stile

## FARM SINK

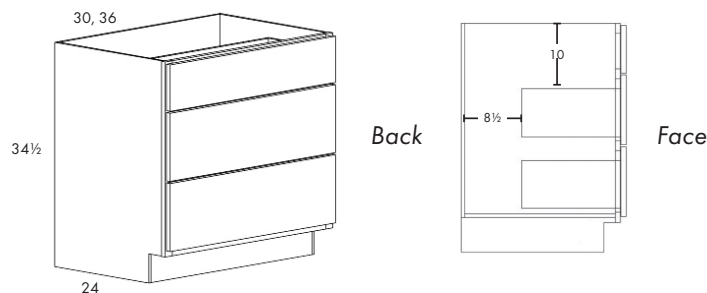


SKU	1	2
BFS33-12	930	1019
BFS36-12	948	1039

- NOTE : Support structure for the sink is not included
- Farm Sink stiles are 3" wide, Rail is 4 1/8".
- Notch dimensions are
  - 33-12 = 8x25
  - 36-12 = 8x28
- Notch is trimmable for use with desired sink.



## COOK N VENT



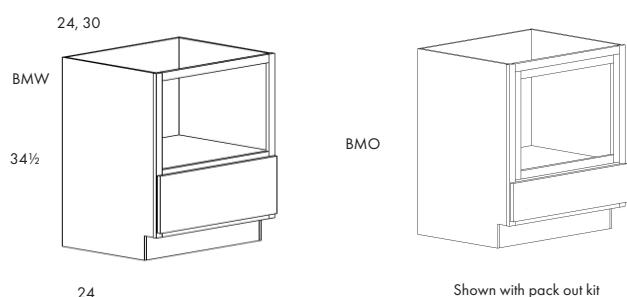
### SKU 1 2

CNV30 1247 1356

CNV36 1458 1458

- Designed for downdraft cooktop or to bypass gas regulator.

## BASE MICROWAVE OVEN



- Frame Stiles & Rails = 1 1/2"
- Opening matches cabinet color

- BMO comes with pack out kit - each piece is 1 1/2" wide and finished on 3 sides

### SKU 1 2

BMW24 946 997

BMW30 1095 1150

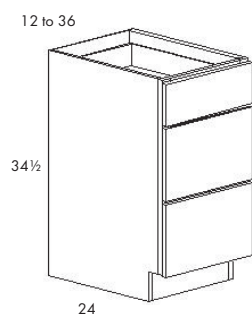
BMO24 794 838

BMO27 856 902

BMO30 918 966

Opening Dimensions					
Cabinet	Cabinet Width	Minimum Width	Maximum Width	Minimum Height	Maximum Height
BMW	24"		21"		16 3/16"
BMW	30"		27"		16 3/16"
BMO	24"	18"	21"	17 1/16"	20 1/16"
BMO	27"	21"	24"	17 1/16"	20 1/16"
BMO	30"	24"	27"	17 1/16"	20 1/16"

## 12" - 36" 3-DRAWER BASE



### SKU 1 2

BD312 592 701

BD315 662 774

BD318 730 846

BD321 808 928

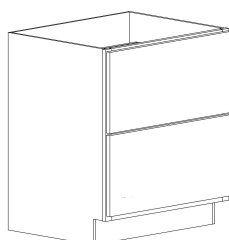
BD324 870 994

BD327 918 1044

BD330 965 1093

BD336 1059 1196

## 30" AND 36" 2-DRAWER BASE



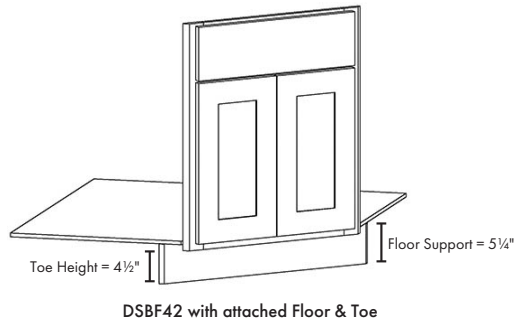
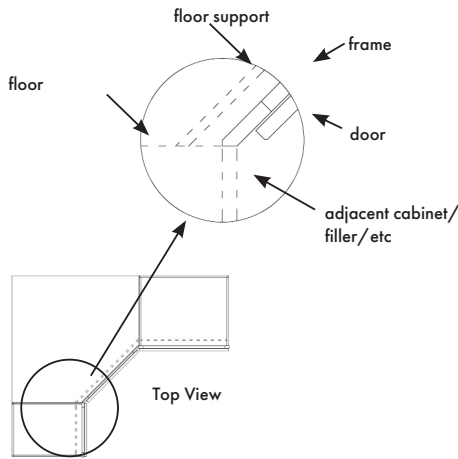
### SKU 1 2

BD230 982 1147

BD236 1081 1256

- Interior Drawer Height = 7 5/8"

## DIAGONAL SINK BASE



### SKU

### 1

### 2

DSBF36

389

489

DSBF39

423

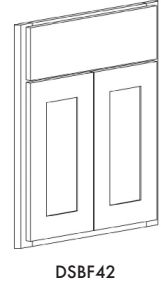
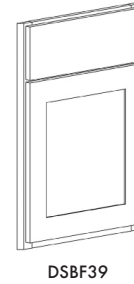
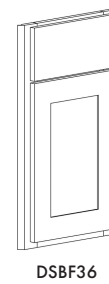
542

DSBF42

466

582

- Trimmable Base Floor and Toe Board included - the trimmable base is made for the DSBF42. Smaller diagonal sink fronts will require the floor and toe board to be trimmed to fit.
- Plywood cleat packs are offered on pg. 60. The cleats are 5 1/4" wide (the same height of the support toe board).
- When using with stone countertops, we recommend adding a Cleat Pack for additional countertop support. See pg. 60 for Cleat Pack.



## BASE EZ-REACH & LAZY SUSANS

### SKU

### 1

### 2

BER33

754

862

BER36

754

862

BLS33L/R-WD

1189

1309

BLS36L/R-PT

1076

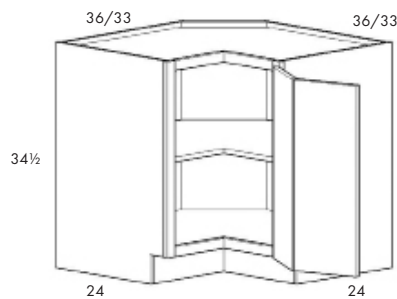
•

BLS36L/R-WD

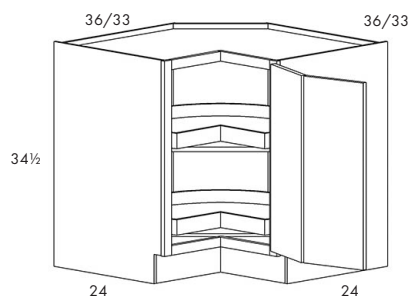
1189

1309

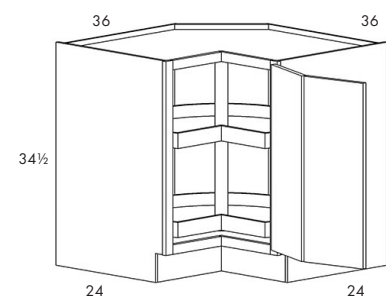
- EZ REACH Includes 1 full depth adjustable shelf
- White Polymer Trays (-PT) use pole for support
- Trays are 27" diameter
- Fits through 2'8" house door as assembled
- Plywood cleat packs (for countertop support) are offered on pg. 60



Drawing depicts BER with adjustable wood shelves.



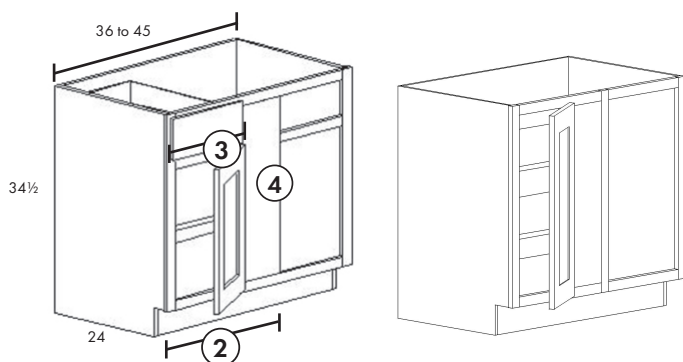
Drawing depicts wood trays supported by shelf



If purchasing BLS36-PT (Polymer Tray) the shelves are supported by a steel pole.



## BASE BLIND



Right Blind Shown

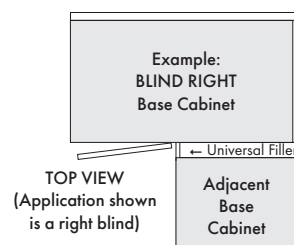
Example: \*BB36-42 cabinet is actually 36" wide

SKU	A+	C		E
		STD	SP	
BB36-42BL/BR	705	750	939	835
BB39-45BL/BR	716	765	958	852
BB42-48BL/BR	807	866	1083	966
BBFH36-42BL/BR	705	750	•	835
BBFH39-45BL/BR	716	765	•	852
BBFH42-48BL/BR	807	866	•	966

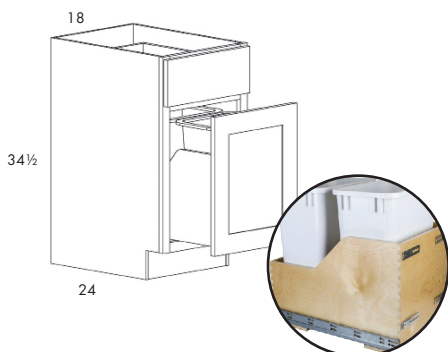
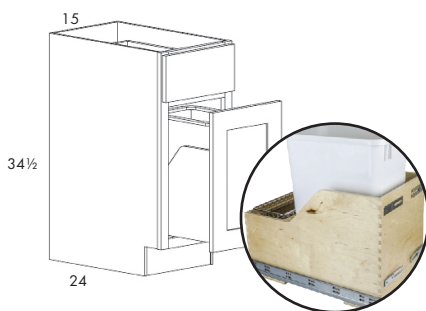
- CAUTION: CABINET MUST BE PULLED TO BYPASS ADJACENT HANDLES, KNOBS and OBSTRUCTIONS.
- Cabinet face size is the same as a cabinet.  
IE: Face size of 12 means door and frame are same size as B12

Cabinet Type	Actual cabinet	Actual Cab Width	(2) *Cab Face Size	(3) Frame Opening at Cab. Face	(4) Max Exposed Stile	Min pull	Max Pull
Bella	BB36-42	36"	12"	9"	8 1/4"	3"	7"
	BB39-45	36"	15"	12"	8 1/4"	3"	7"
	BB42-48	42"	18"	15"	8 1/4"	3"	7"
All Other Framed Doors	BB36-42	36"	12"	9"	7 1/2"	3"	7"
	BB39-45	36"	15"	12"	7 1/2"	3"	7"
	BB42-48	42"	18"	15"	7 1/2"	3"	7"

Filler not included with cabinet



## BASE WASTE BASKETS

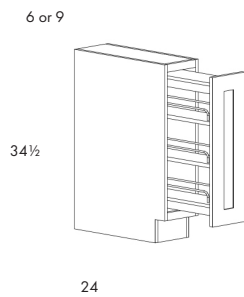


SKU	A+	C		E
		STD	SP	
BWB15	1150	1326	1658	1384
BWBD18	1333	1486	1859	1558

- BWB15 Single Waste Basket includes 1 Waste Basket
- BWBD18 Double Waste Basket includes 2 Waste Baskets
- Each waste basket has 35 quart capacity
- Depth modification not allowed on Waste Basket
- Door is bored out for hinges



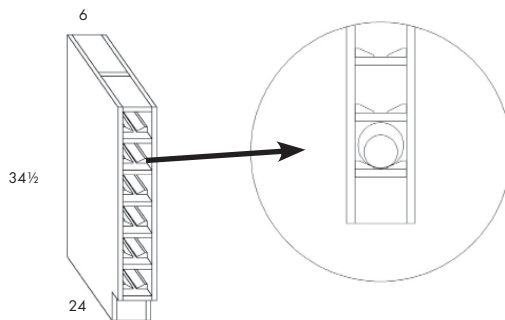
## BASE SPICE PULL-OUT CABINET



SKU	1	2
BSP06	743	800
BSP09	856	909
*BUP09	1458	1504

- Utilizes Soft Close undermount slide.
- BSP06 has 4 1/2" opening
- BSP09 has 7 1/2" opening
- See 3" Spice Pull Out on pg. 60
- \*See pg. 12 for Revashelf graphic

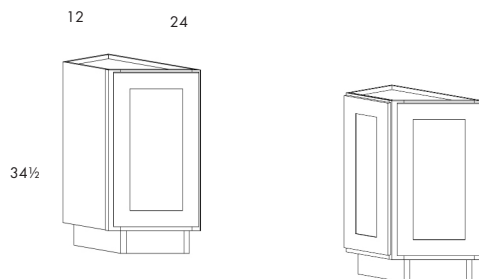
## BASE WINE CUBBY



SKU	1	2
BWC-6	1020	1020

- Trimmable to 12" depth.
- Shelves center wine bottles in opening
- Suitable for bottles up to 4 1/4" diameter.
- This cabinet **cannot** be used as a wall cabinet

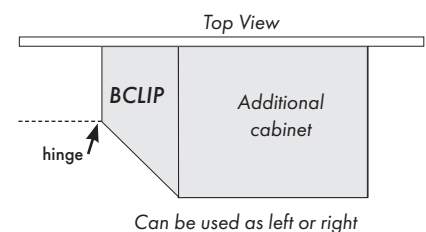
## BASE CLIP



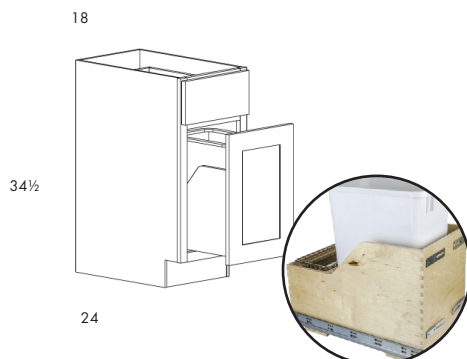
SKU	1	2
BCLIP	877	966

- Has 2 adjustable shelves - hinges are located on the short side.
- Detached toe makes it reversible
- Functionally designed to allow 24" - 12" cabinet transitions

Example: Add Wall Skin (pg. 57) and DP30T (pg. 49) to achieve the styled look at end of BClip



## BASE LAUNDRY HAMPER



SKU	1	2
BLH18	1066	1118

- Includes hamper\*
- \*Hamper does not come with top





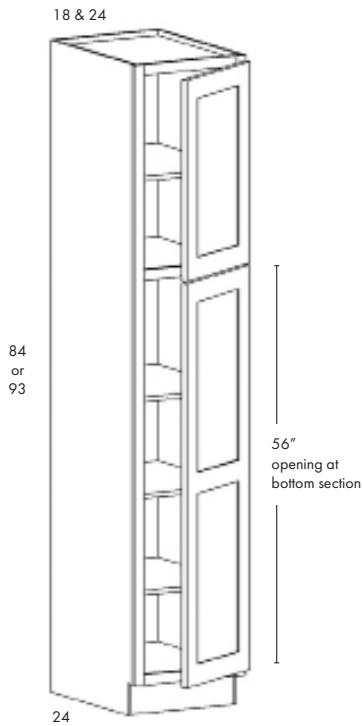


## TALL PANTRY

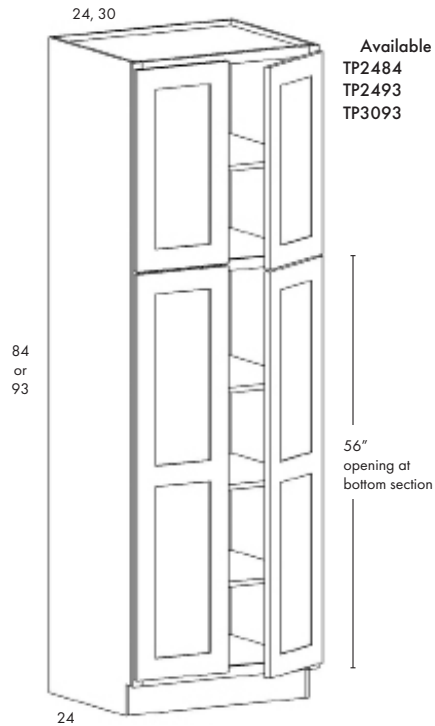
SKU		1	2
TP1884	SINGLE	1061	1155
TP2484-S	SINGLE	1262	•
TP2484	PAIR	•	1383
TP1893	SINGLE	1146	1242
TP2493-S	SINGLE	1362	•
TP2493	PAIR	•	1482
TP3093	PAIR	1621	1746
TP1893-27D	SINGLE	1888	1983
TP2493-S-27D	SINGLE	2104	•
TP2493-27D	PAIR	•	2224
TP3093-27D	PAIR	2362	2488

- 1 adjustable shelf in top and 3 adjustable shelves in bottom
- All 93 Tall cabinets have 2 shelves in top section
- 3 hinges on bottom doors
- Reduce depth to 21" for Linen cabinet

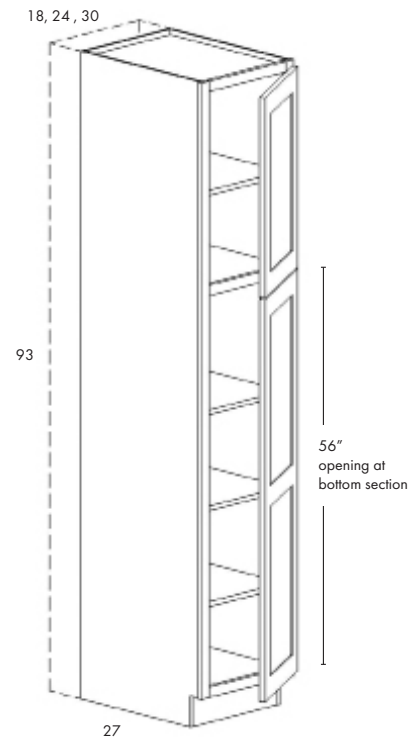
Single Door



Paired Doors



27" Deep Pantry



## LOOSE TOE BOX



- This product comes unassembled
- Product is unfinished
- Product is compatible with all TALL SKUs
- To be bought as needed along with "remove toe" mod

SKU	PRICE
LOOSE-TOE33	145
LOOSE-TOE30	145
LOOSE-TOE27	145
LOOSE-TOE24	145
LOOSE-TOE21	145
LOOSE-TOE18	145

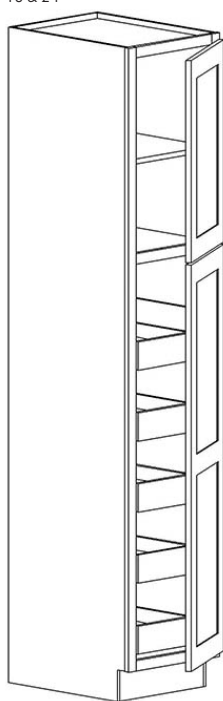
TALL PANTRY  
WITH 5 ROS

SKU		1	2
TP1884-5ROS	SINGLE	2074	2168
TP2484-S-5ROS	SINGLE	2391	•
TP2484-5ROS	PAIR	•	2512
TP1893-5ROS	SINGLE	2160	2255
TP2493-S-5ROS	SINGLE	2491	•
TP2493-5ROS	PAIR	•	2611
TP3093-5ROS	PAIR	2866	2991

- All 93 tall cabinets have 2 shelves in top section, all 84 tall cabinets have 1 adjustable shelf in top section
- 5 ROS in bottom section
- Reduce depth to 21" for Linen cabinet. Reduce depth modification requires cabinet depth and roll out shelf to be modified
- ROS are adjustable - usable height set at factory is :  
Top ROS - 14½"  
Bottom 4 ROS - 9"
- 3 hinges on bottom doors

Single Door

18 &amp; 24

84  
or  
9356"  
opening at  
bottom section

Paired Doors

24, 30

84  
or  
9356"  
opening at  
bottom section

Available SKUs  
TP2484  
TP2493  
TP3093

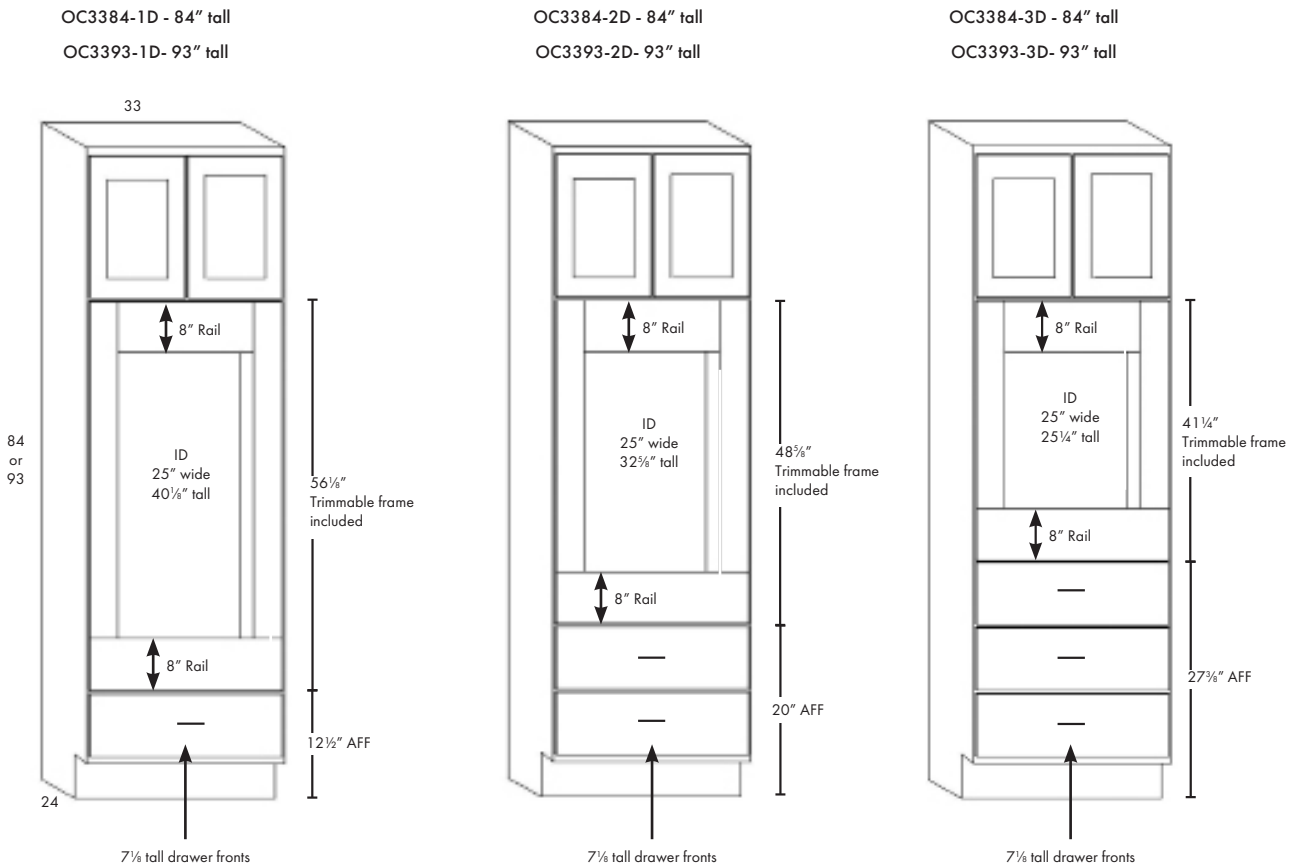


OVEN CABINET

SKU	1	2
OC3384-1D	2006	2212
OC3384-2D	2311	2534
OC3384-3D	2696	2856
OC3393-1D	2202	2434
OC3393-2D	2507	2756
OC3393-3D	2812	3078

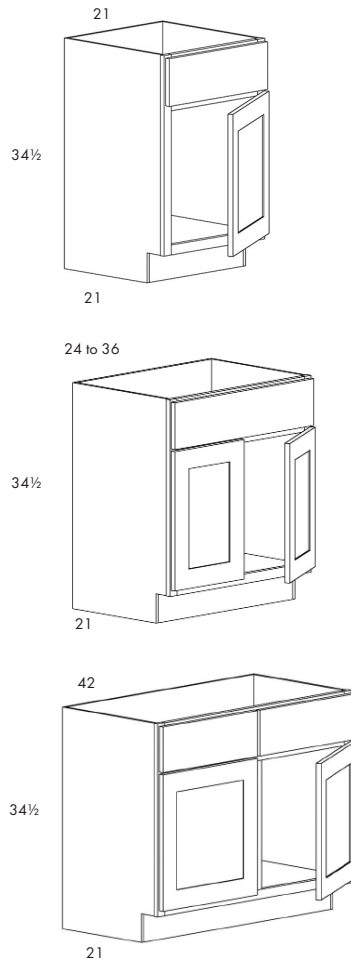
Door Grid for Oven Cabinets		
Cab Height	Top Door Height	Adj Shelf
84	15	0
93	24	1

- Our Oven Cabinets are supplied with a trimmable frame that applies to the standard face frame and lines up with doors.
- Shelf is supplied to be mounted in the field for Oven Cabinet support
- Frame supplied to be trimmed in the field



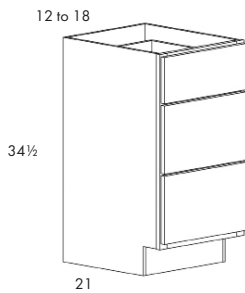
\*AFF - Above Finished Floor

## 21" - 42" VANITY SINK



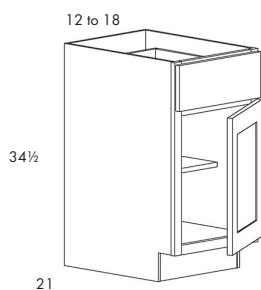
SKU	1	2
VS21	406	471
VS24	448	498
VS27	486	542
VS30	525	584
VS33	541	615
VS36	576	644
VS42	657	699
VS21-1ROS	628	698
VS24-1ROS	684	739
VS27-1ROS	734	794
VS30-1ROS	783	848
VS33-1ROS	811	891
VS36-1ROS	858	930

## VANITY DRAWER STACK



SKU	1	2
VD312	592	701
VD315	662	774
VD318	730	846

## VANITY BASE WITH TOP DRAWER

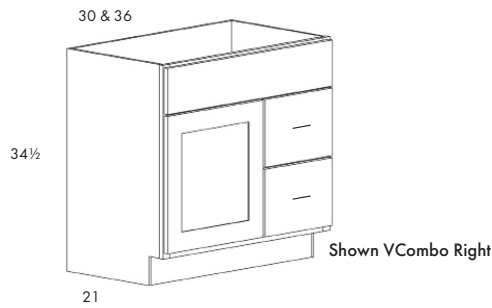


SKU	1	2
VB12	378	458
VB15	419	510
VB18	457	554



## VANITY COMBOS

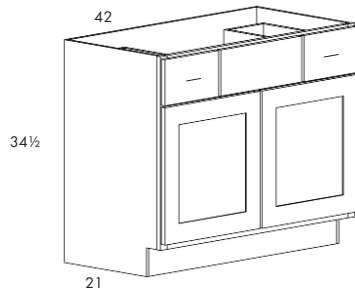
### VCOMBO30 & VCOMBO36



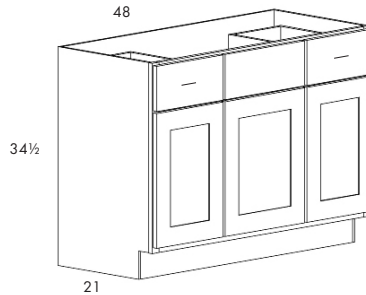
SKU	1	2
VCOMBO30L/R	692	818
VCOMBO36L/R	746	922
VCOMBO42	803	998
VCOMBO48	971	1182
VCOMBO54	1241	•
VCOMBO60DB	1419	•

- VCombo30 L or R 12" Drawer, 18" Door (9" wide frame opening)
- VCombo36 L or R 15" Drawer, 21" Door (12" wide frame opening)
- VCombo 42 Drawer Front faces 12/18/12
- VCombo 48 - faces 15/18/15
- VCombo54 - faces 18/18/18
- VCombo60DB - faces 21/18/21
- Does not come with Scribe/Toeskin

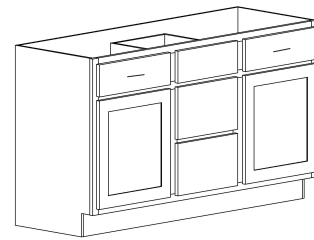
### VCOMBO42



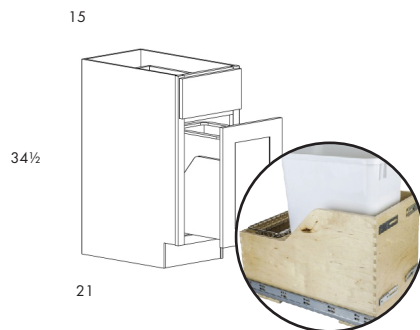
### VCOMBO48/54



### VCOMBO60DB



## VANITY WASTE BASKET

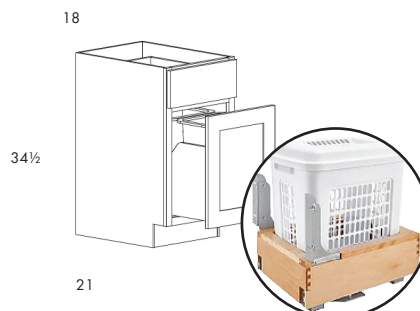


SKU	1	2
VVWB15	963	1101

- Single waste basket
- Each garbage can has 35 quart capacity
- Includes Waste Basket
- Depth modification not allowed on Waste Basket



## VANITY LAUNDRY HAMPER



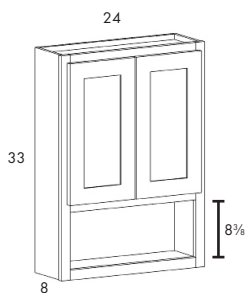
SKU	1	2
VLH18	1004	1147

- Depth modification not allowed on Laundry Hamper
  - Includes Hamper\*
- \*Hamper does not come with top





## 24" VANITY WALL OPEN SHELF



### SKU

### 1

### 2

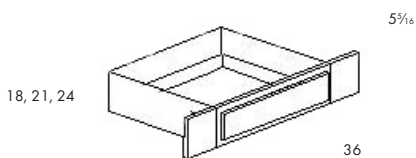
VWOS2433

647

708

- Finished interior matches cabinet color

## KNEE DRAWER



### SKU

### 1

### 2

KD36-18D

349

370

KD36-21D

349

370

KD36-24D

322

343

- This drawer front is **slab only** in all door styles
- Drawer box is always 15" deep
- Drawer box Carcass is always 18" deep
- 36" wide frame is trimmable down to 24" wide
- Depth refers to bottom mounting cap depth
- Mounting cap depth should be ordered for depth from frame to wall

## FILE DESK DRAWER - 24" DEEP



### SKU

### 1

### 2

FDD18

623

710

- File Drawer Desk allows Pendaflex file system in lower drawer, not included

# ADA HEIGHT

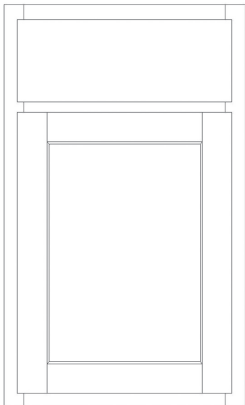


— Special Order —

Supplementary Products for ADA and Fair Housing  
6 Week Lead Time

MODIFICATIONS ARE NOT  
ALLOWED ON ADA CABINETS

ADA CABINET SPECIFICATIONS



**BELLA PLUS**

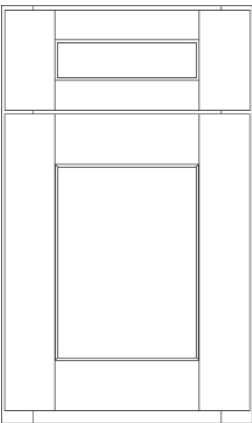
**Price Code**

**Color Specification**

**1**

Smoked Cashew (CS)  
White Painted (WH)

- 1/2" Overlay
- Door - 2 3/8" stile & rail
- Top and bottom are "back-beveled" for finger pull



**PARK PLACE**

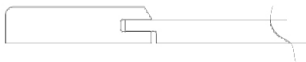
**Price Code**

**Color Specification**

**2**

White Painted (WH)  
Smoked Cashew (CS)

- 1 1/4" Overlay
- Drawer hardware mounting space = 2 7/8" tall
- Drawer Front - 3" stile, 2 1/8" rail



COLOR FINISHED PER ORDER

### 1. Doors

- Mortise and tenon solid wood stiles and rails.
- Painted doors mortise and tenon made from MDF.

### 2. Hinges

- Soft-Close concealed hinge with 107° opening.

### 3. Face Frame

- $\frac{3}{4}$ " x  $1\frac{1}{2}$ " solid wood mortise and tenon.
- Comes pre-drilled for hinges Left and Right

### 4. Backs

- $\frac{1}{2}$ " select birch veneer plywood.
- Ultraviolet clear finish.

### 5. Side Panels

- $\frac{1}{2}$ " select maple laminate furniture board.
- Ultraviolet clear finish inside cabinet
- Exterior finished to match the frame and door.

### 6. Adjustable Shelving

- $\frac{3}{4}$ " select maple laminate furniture board with matching front edge banding.
- Base cabinet shelf depth  $15\frac{5}{16}$ ".

### 7. Tops and Bottoms

- $\frac{1}{2}$ " select maple laminate furniture board
- Ultraviolet clear finish.

### 8. Drawer Boxes

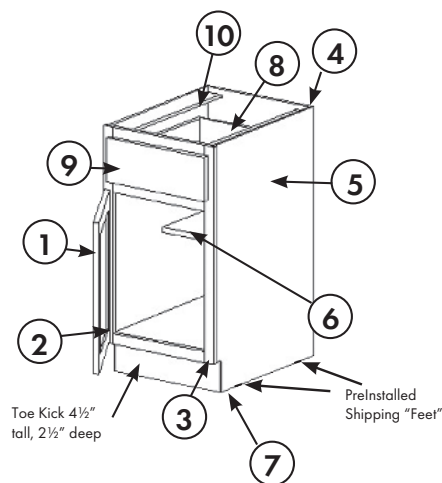
- Hybrid dovetail solid maple
- $\frac{1}{2}$ " furniture board bottoms
- Undermount soft close full extension drawer slides.

### 9. Drawer Box Interior Depth

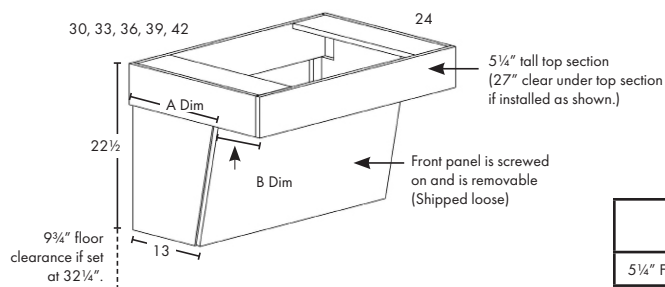
- $3\frac{3}{8}$ " interior top drawer functional depth.
- Deeper than most competitors.

### 10. Panel Beams

- $\frac{1}{2}$ " thick x  $2\frac{1}{4}$ " furniture board panel beams.



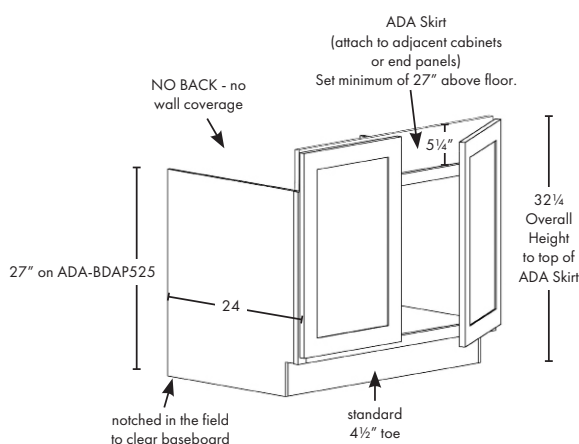


**BASE DEPTH – WALL HUNG**


	A Dimension (includes front panel)	B Dimension
5 1/4" Face	16	8

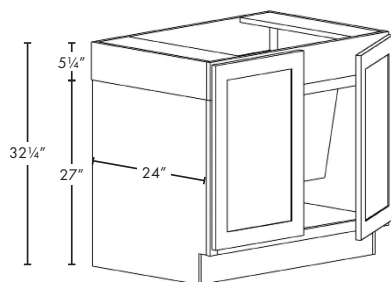
SKU	PRICE
ADA-BWH-30	1262
ADA-BWH-33	1286
ADA-BWH-36	1313
ADA-BWH-39	1343
ADA-BWH-42	1377

- Designed to support a countertop in a freestanding application. Ensure adequate wall blocking for support.
- Front panel may have to be trimmed to accommodate sink or garbage disposal.
- Base depth is 24" deep

**BASE DEPTH – ADA ADAPTABLE WITH ADA SKIRT**


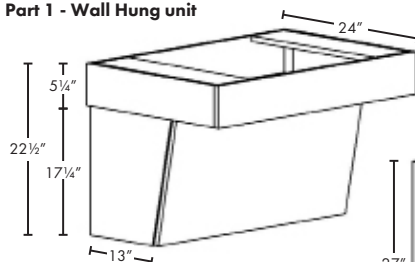
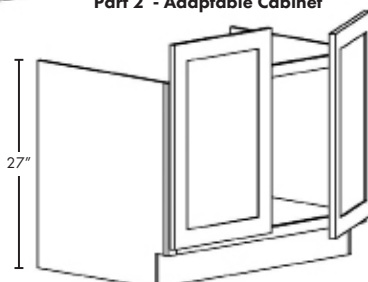
SKU	1	2
ADA-BDAP-30	942	1022
ADA-BDAP-33	976	1059
ADA-BDAP-36	995	1081
ADA-BDAP-39	1019	1107
ADA-BDAP-42	1054	1145

- Doors line up with adjacent cabinet faces.
- This cabinet does **NOT** have a back.
- Adjustable shelf is not included
- Application is designed to fit between cabinets or end panels. The ADA Skirt should be permanently attached to adjacent cabinets or end panels. Adaptable cabinet can be removed and ADA Skirt stays in place.

**BASE DEPTH – ADA ADAPTABLE COMBO**


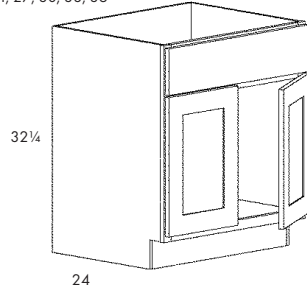
SKU	1	2
ADA-BCOMBO-30	1951	2132
ADA-BCOMBO-33	2004	2190
ADA-BCOMBO-36	2045	2235
ADA-BCOMBO-39	2099	2295
ADA-BCOMBO-42	2142	2342

- As Installed - (Wall Hung and Adaptable Cabinet Combo)
- ADA Adaptable cabinet can be removed. For use in tight spaces where there are no adjacent cabinets or end panels.
- ADA Skirt **not** included or required with Combo
- Wall Hung unit attaches to wall
- Adaptable Cabinet slides underneath Wall Hung unit
- Wall Hung grain is horizontal. Base Adaptable side is vertical grain.

**Assembly Includes**
**Part 1 - Wall Hung unit**

**Part 2 - Adaptable Cabinet**


**ADA BASE SINK**

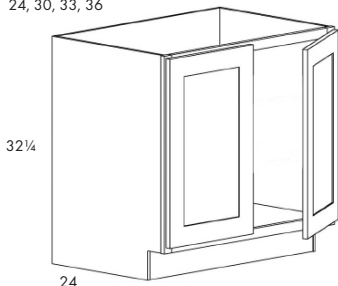
24, 27, 30, 33, 36



SKU	1	2
ADA-BS24	757	818
ADA-BS27	782	846
ADA-BS30	806	873
ADA-BS33	830	899
ADA-BS36	859	931

**ADA BASE SINK FULL HEIGHT DOORS**

24, 30, 33, 36

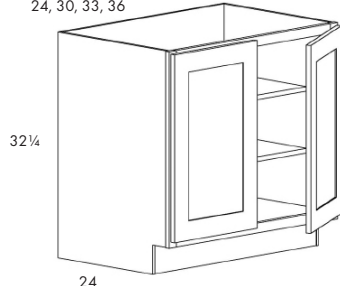


SKU	1	2
ADA-BSFH24	762	825
ADA-BSFH30	797	862
ADA-BSFH33	834	903
ADA-BSFH36	870	942

- Sink base full height doors includes 1/4" skin that is 4 1/4" tall behind top rail

**ADA BASE FULL HEIGHT DOORS**

24, 30, 33, 36

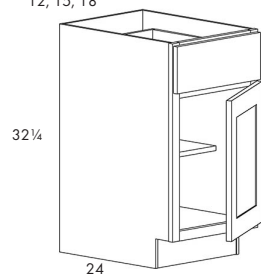


SKU	1	2
ADA-BFH24	934	1013
ADA-BFH30	995	1081
ADA-BFH33	1075	1169
ADA-BFH36	1112	1209

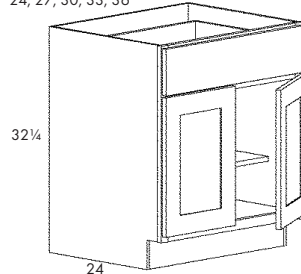
- 2 full depth adjustable shelves included

**ADA BASE**

12, 15, 18



24, 27, 30, 33, 36

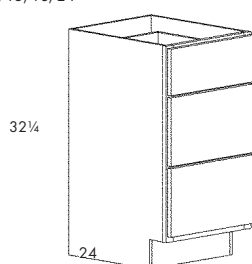


SKU	1	2
ADA-B12	657	686
ADA-B15	698	730
ADA-B18	737	774
ADA-B24	825	863
ADA-B27	852	894
ADA-B30	906	952
ADA-B33	926	974
ADA-B36	987	1042

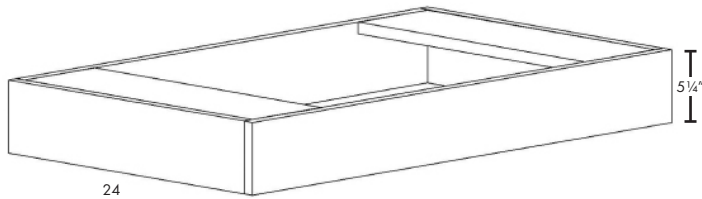
- Add ROS modifications available.

**ADA 3-DRAWER BASE**

12, 15, 18, 24



SKU	1	2
ADA-BD312	906	907
ADA-BD315	966	973
ADA-BD318	1026	1038
ADA-BD324	1150	1175

**BASE BOX SINGLE - BASE DEPTH**

Top View

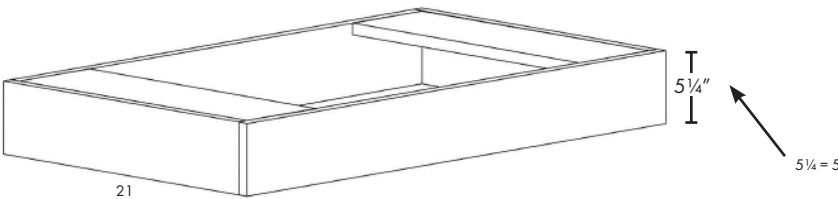


Top stretchers are pocket screwed on 3 sides.  
Front and back, left and right sides are L-bracketed together.

**SKU PRICE**

ADA-BBOXS-30	827
ADA-BBOXS-33	844
ADA-BBOXS-36	861
ADA-BBOXS-42	895
ADA-BBOXS-48	929

- \*All components are solid wood
- \*Requires support from adjacent cabinets or adjacent walls or Corbels/Brackets underneath
- BBOX is 24" deep
- Can be used for sink or cooktop applications.
- For freestanding applications, use Steel Utility Brackets 15x21 with a wood backer or other suitable support.

**VANITY BOX SINGLE - VANITY DEPTH**

Top View



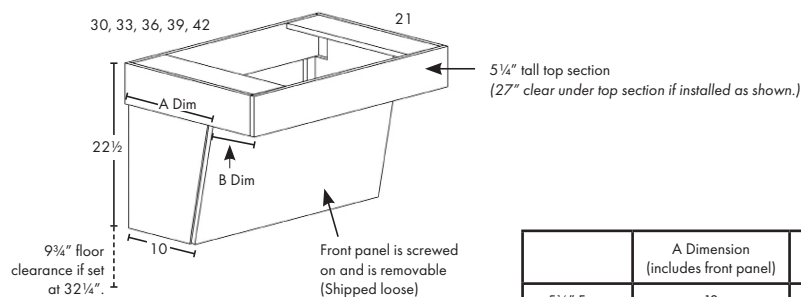
Top stretchers are pocket screwed on 3 sides.  
Front and back, left and right sides are L-bracketed together.

**SKU PRICE**

ADA-VBOXS5-30	827
ADA-VBOXS5-33	844
ADA-VBOXS5-36	861
ADA-VBOXS5-42	895
ADA-VBOXS5-48	929

- \*All components are solid wood
- \*Requires support from adjacent cabinets or adjacent walls or Corbels/Brackets underneath
- For freestanding applications, use Steel Utility Brackets 15x21 with a wood backer or other suitable support.
- Can be used for sink or cooktop applications.
- VBOX is 21" deep

## VANITY DEPTH – WALL HUNG

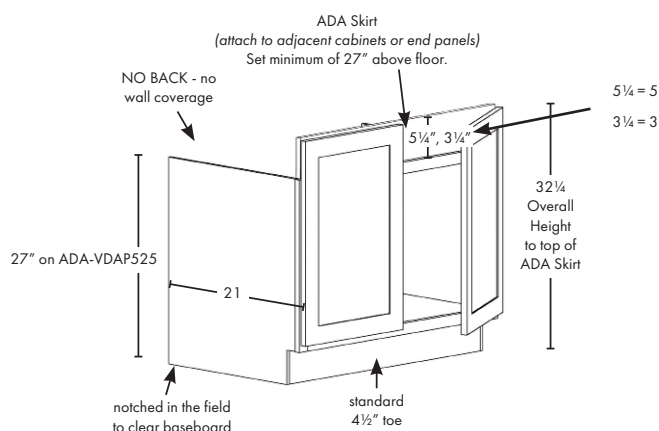


	A Dimension (includes front panel)	B Dimension
5 1/4" Face	13	8
3 1/4" Face	13	8

SKU	PRICE
ADA-VWH5-30	1262
ADA-VWH5-33	1286
ADA-VWH5-36	1313
ADA-VWH5-39	1343
ADA-VWH5-42	1377

- Designed to support a countertop in a freestanding application. Ensure adequate wall blocking for support.
- Front panel may have to be trimmed to accommodate sink or garbage disposal.
- Vanity depth is 21" deep

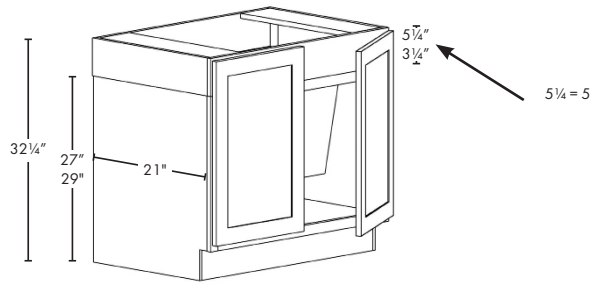
## VANITY DEPTH – ADA ADAPTABLE WITH ADA SKIRT



SKU	1	2
ADA-VDAP5-30	942	1022
ADA-VDAP5-33	976	1059
ADA-VDAP5-36	995	1081
ADA-VDAP5-39	1019	1107
ADA-VDAP5-42	1054	1145

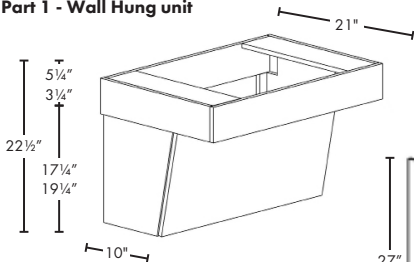
- Doors line up with adjacent cabinet faces.
- This cabinet does **NOT** have a back.
- Adjustable shelf is not included
- Application is designed to fit between cabinets or end panels. The ADA Skirt should be permanently attached to adjacent cabinets or end panels. Adaptable cabinet can be removed and ADA Skirt stays in place.

VANITY DEPTH – ADA ADAPTABLE COMBO

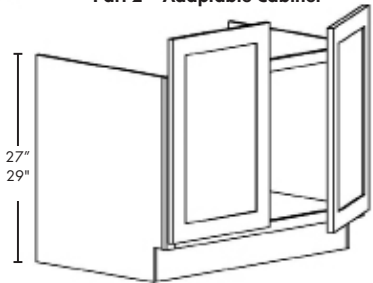


Assembly Includes

Part 1 - Wall Hung unit



Part 2 - Adaptable Cabinet

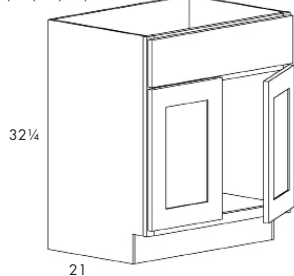


SKU	1	2
ADA-VCOMBO5-30	1951	2132
ADA-VCOMBO5-33	2004	2190
ADA-VCOMBO5-36	2045	2235
ADA-VCOMBO5-39	2099	2295
ADA-VCOMBO5-42	2142	2342

- As Installed - (Wall Hung and Adaptable Cabinet Combo)
- ADA Adaptable cabinet can be removed. For use in tight spaces where there are no adjacent cabinets or end panels.
- ADA Skirt **not** included or required with combo
- Wall Hung unit attaches to wall
- Adaptable Cabinet slides underneath Wall Hung unit
- Wall Hung grain is horizontal. Base Adaptable side is vertical grain.

## ADA VANITY SINK

24, 27, 30, 33, 36



### SKU

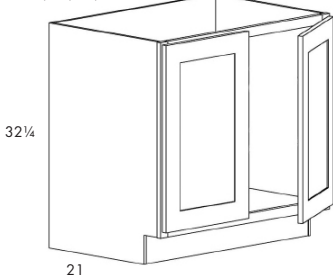
### 1

### 2

ADA-VS24	729	788
ADA-VS27	762	825
ADA-VS30	806	873
ADA-VS33	832	901
ADA-VS36	859	931

## ADA VANITY SINK FULL HEIGHT DOORS

24, 30, 33, 36



### SKU

### 1

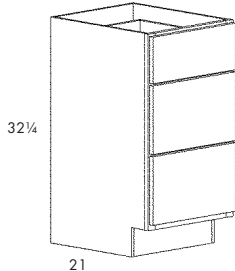
### 2

ADA-VSFH24	762	825
ADA-VSFH30	797	862
ADA-VSFH33	834	903
ADA-VSFH36	870	942
ADA-VSFH42	906	982

- Sink base full height doors includes 1/4" skin that is 4 1/4" tall behind top rail

## ADA VANITY DRAWER STACK

12, 15, 18, 24



### SKU

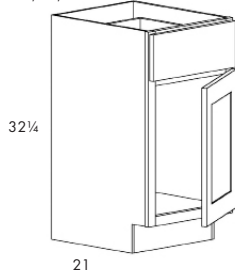
### 1

### 2

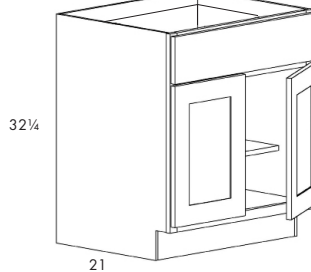
ADA-VD312	906	907
ADA-VD315	966	973
ADA-VD318	1026	1038
ADA-VD324	1150	1175

## ADA VANITY BASE - WITH TOP DRAWER

12, 15, 18



24, 27, 30, 33, 36



### SKU

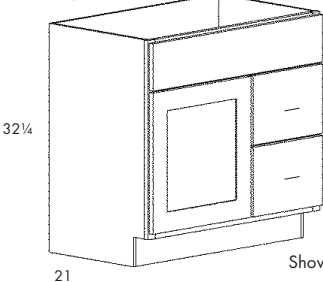
### 1

### 2

ADA-VB12	657	686
ADA-VB15	698	730
ADA-VB18	737	774
ADA-VB24	825	863
ADA-VB27	865	907
ADA-VB30	906	952
ADA-VB33	945	995
ADA-VB36	987	1042

## ADA VANITY COMBOS

30, 36



### SKU

### 1

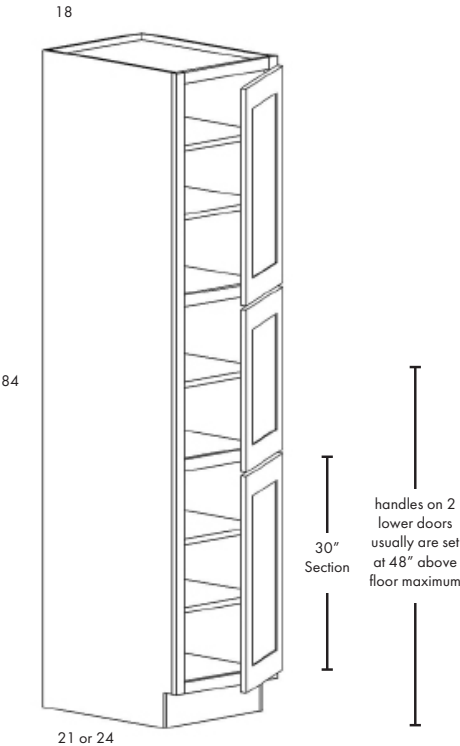
### 2

ADA-VC30L/R	1045	1082
ADA-VC36L/R	1100	1143

SKU	DRAWER WIDTH	DOOR WIDTH
ADA-VC30	12"	18"
ADA-VC36	15"	21"

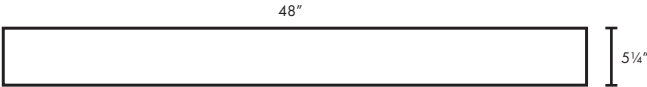
Shown Right

ADA TALL PANTRY/LINEN



SKU	1	2
ADA-TL1884	1629	1770
ADA-TP1884	1629	1170

ADA SKIRT



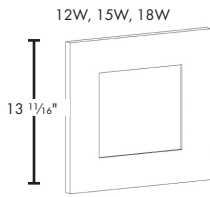
SKU	PRICE
ADA-SKIRT48	306

- Cut to fit
- Fits between Cabinets or End Panels

**GREEN FOREST**  
**TRIM, MOULDING & ACCESSORIES**



## DOOR PANELS FOR STACKERS

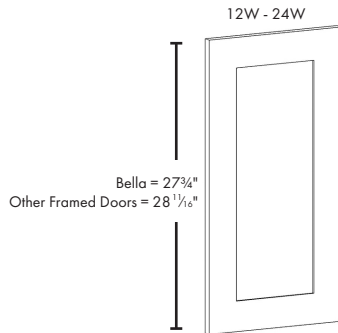


STD	Net Width
12" W	11 1/2"
15" W	14 1/2"
18" W	17 1/2"

SKU	A	STD
DP15T-12W	•	119
DP15T-15W	•	143
DP15T-18W	•	169

\* Available ONLY for Park Place

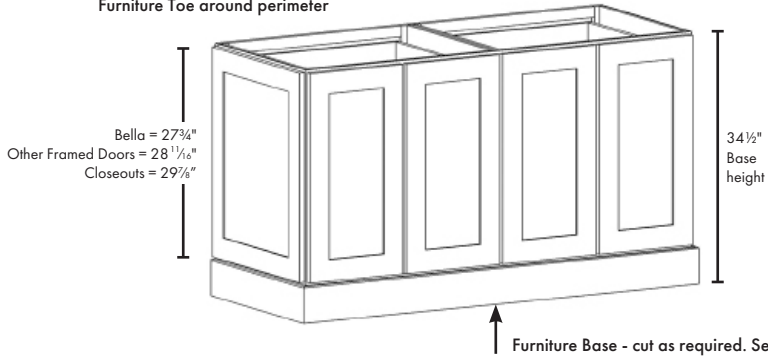
## DOOR PANELS FOR BASE ENDS & BACKS



SKU	A	STD
DP30T-12W	150	159
DP30T-13.5W	167	174
DP30T-15W	184	191
DP30T-16.5W	203	208
DP30T-18W	223	225
DP30T-21W	261	272
DP30T-24W	313	337

- These door panels are the same height/width as doors from Wall 30" high cabinets.
- Parts used in example - 1/4" Sheet Good applied to back, 1/4" Base Skin applied to ends, corners of 1/4" Skin or apply Outside Corner moulding (OCM), apply Door Panels and Furniture Base.

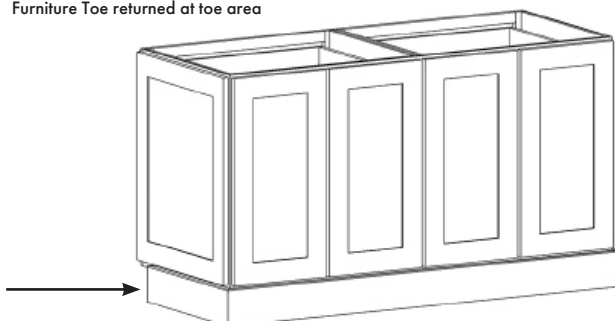
Example 1 - Island Back and End  
Furniture Toe around perimeter



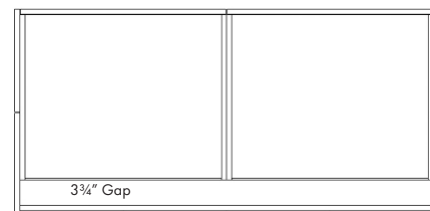
Bella (27 3/4" tall)	Net Width	Other Framed Doors (28 1/16" tall)	Net Width
12"W	10"	12"W	11 1/2"
13 1/2"W	12 1/2"	13 1/2"W	13 1/4"
15"W	13"	15"W	14 1/2"
16 1/2"W	15 1/2"	16 1/2"W	16 1/4"
18"W	16"	18"W	17 1/2"
21"W	19"	21"W	20 1/2"
24"W	22"	24"W	23 1/2"

Furniture Base - cut as required. See pg. 56

Example 2 - Island Back and End  
Furniture Toe returned at toe area



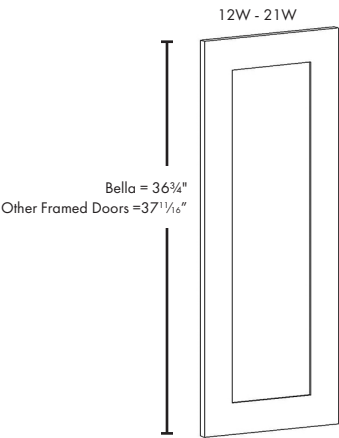
Example 1 - Top View



Example 1 - As Shown

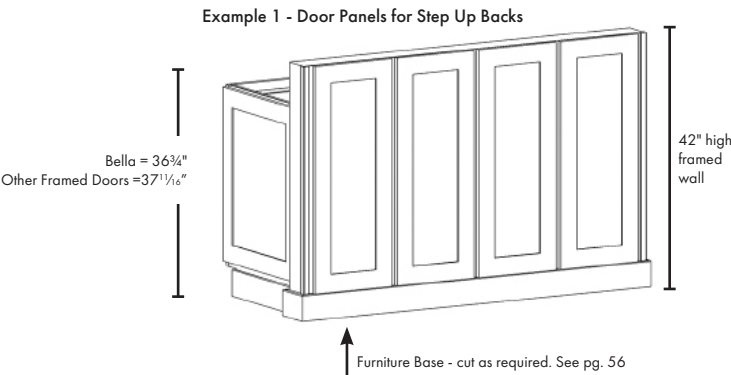
- Door Panels
- 1/2 Sheetgood applied to cabinet backs with spacers
- Furniture Base

DOOR PANELS FOR  
STEP-UP BACKS

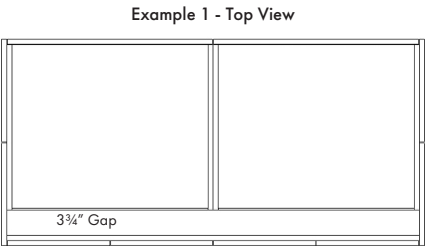


SKU	A	STD
DP39T-12W	199	210
DP39T-13.5W	218	225
DP39T-15W	238	242
DP39T-16.5W	276	293
DP39T-18W	317	344
DP39T-21W	380	412

- These door panels are the same height/width as doors from Wall 39" high cabinets.
- Parts used in example - 1/4" Sheetgood applied to back, ends and small portion of framed wall front, Furniture Base applied, Outside Corner moulding (OCM) applied, Door Panels applied.

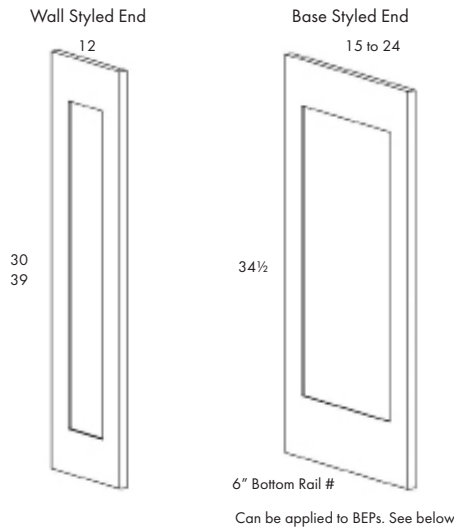


Bella (36 3/4" tall)	Net Width	H&H (37 1/16" tall)	Net Width
12"W	10"	12"W	11 1/2"
13 1/2"W	12 1/2"	13 1/2"W	13 1/4"
15"W	13"	15"W	14 1/2"
16 1/2"W	15 1/2"	16 1/2"W	16 1/2"
18"W	16"	18"W	17 1/2"
21"W	19"	21"W	20 1/2"



- Example 1 - As Shown
- Door Panels
  - 1/2 Sheetgood applied to cabinet backs with spacers
  - Furniture Base

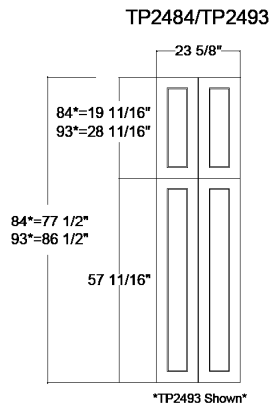
## WALL & BASE STYLED ENDS



SKU	A	STD
WSE1230	206	218
WSE1239	247	286
BSE15	250	272
BSE18	298	323
BSE21	342	374
BSE24	403	442

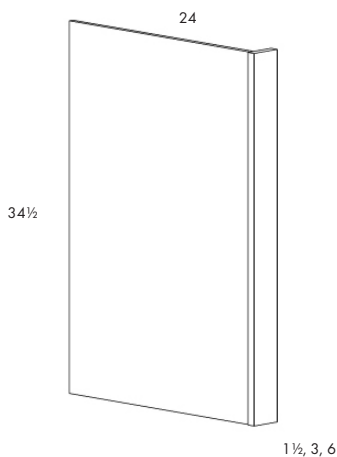
- Bella WSEs match Park Place door profiles
- Wall Styled Ends (WSE) are same height as cabinet door and include a wall skin.
- Base Styled Ends (BSE) are same height as base cabinet and extend to floor.

## TALL STYLED ENDS



SKU	A	STD
TSE2484	•	995
TSE2493	•	1087

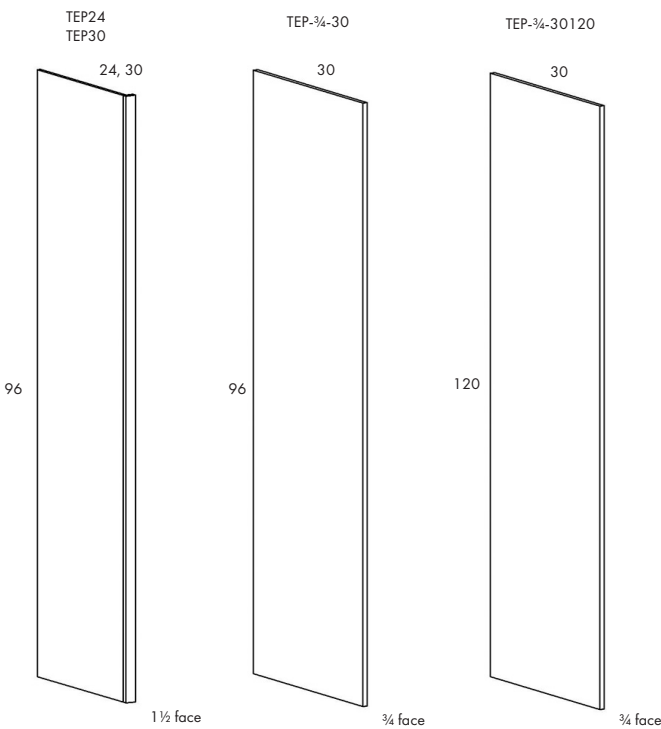
## BASE END PANELS



SKU	STAIN	PAINT
BEP-1 1/2-PBD	82	82
BEP3-PBD	135	135
BEP6-PBD	214	214

- Panel is furniture board
- Trim to height as required
- Returns ship loose

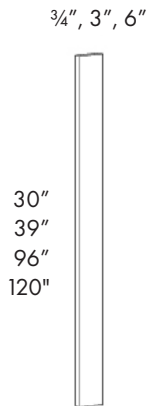
TALL END PANELS



SKU	STAIN	PAINT	SP
TEP24	517	517	646
TEP30	646	646	808
TEP-3/4-30	776	776	970
TEP-3/4-30120	1800	1800	1800

- Trim to height as required
- TEP 24 & TEP 30 — 1/2" plywood with 1 1/2" solid wood frame
- TEP-3/4-30 — 3/4" thick plywood - edge banded front and back
- Returns ship loose

## FILLERS

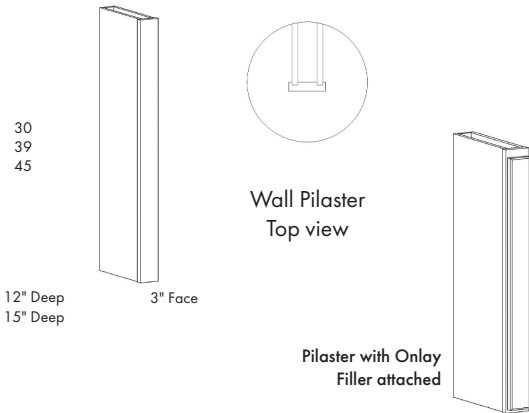


SKU	STAIN	PAINT
-----	-------	-------

F¾-30	33	33
F3-30	62	62
F6-30	123	123
F3-39	75	75
F6-39	150	150
F3-96	174	174
F6-96	347	347
F3-120	261	261
F6-120	521	521

- Fillers are finished on all edges

## WALL PILASTER



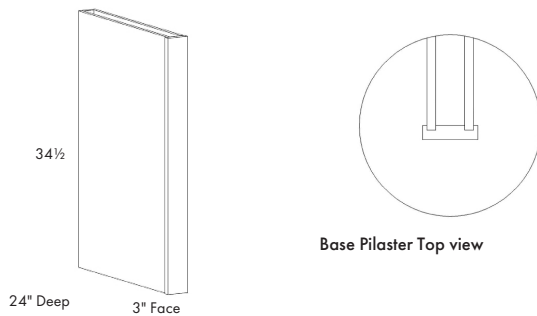
SKU	STAIN	PAINT
-----	-------	-------

PILW-330-12D	405	405
PILW-339-12D	454	454
PILW-345-12D	522	522
PILW-330-15D	405	405
PILW-339-15D	454	454
PILW-345-15D	522	522

- ¼" Wall Skin can be added to flush sides
- Outside profile will not match Ivory Brookside Door

See following pages for Onlay Face

## BASE PILASTER



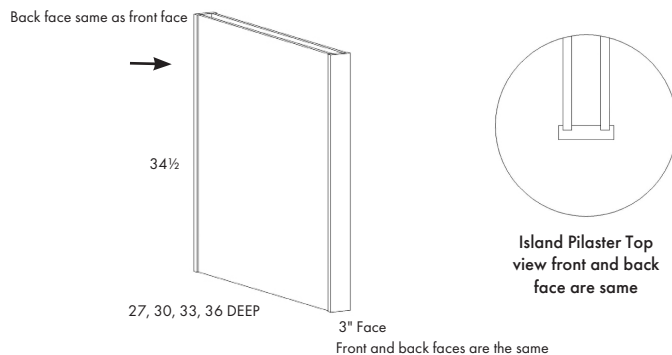
SKU	STAIN	PAINT
-----	-------	-------

PILB-334-24D	573	573
--------------	-----	-----

- ¼" Base Skin can be added to flush sides
- Outside profile will not match Ivory Brookside Door

# TRIM & ACCESSORIES

## ISLAND PILASTER



SKU	STAIN	PAINT
PILI-334-27D	658	658
PILI-334-30D	709	709
PILI-334-33D	757	757
PILI-334-36D	811	811

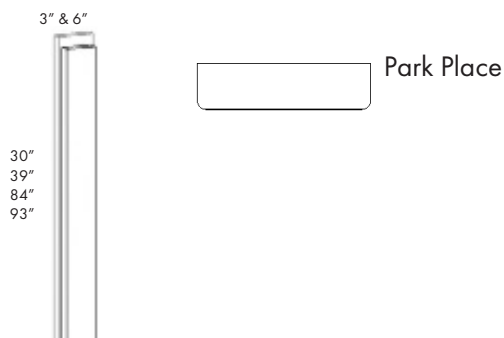
- 1/4" Skin can be added to flush sides

## ISLAND SKIN

SKU	STAIN	PAINT
ISL36SKIN	252	252

- Can be field cut for 27, 30, 33 ISLAND PILASTER

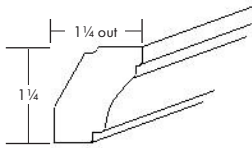
## ONLY FACE (APPLIES TO FILLERS)



SKU	STAIN	PAINT
OLF(D)3-30	79	79
OLF(D)6-30	164	164
OLF(D)3-39	99	99
OLF(D)3-84	211	211
OLF(D)3-93	232	232

- Heights are designed for Park Place doors
- \*Designed to apply to 3" filler (filler not included)
- \*Utilized to make fillers appear more decorative
- Only Face is the height of doors and 1/2" narrower than filler - I.E. - 3" filler = 2 1/2" only face

### 1 ¼ CROWN



#### SKU

#### STAIN

#### PAINT

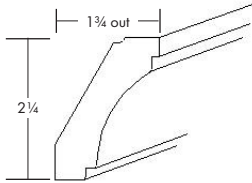
CR1

159

159

- CR1 is 1 ¼" tall as installed

### 2 ¼ CROWN



#### SKU

#### STAIN

#### PAINT

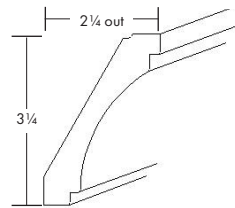
CR2

221

221

- CR2 is 2 ¼" tall as installed

### 3 ¼ CROWN



#### SKU

#### STAIN

#### PAINT

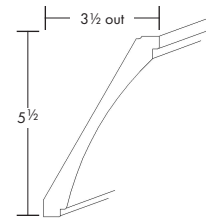
CR3

259

259

- CR3 is 3 ¼" tall as installed

### 5 ½ CROWN



#### SKU

#### STAIN

#### PAINT

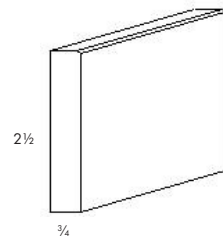
CR5

335

335

- CR5 is 5 ½" tall as installed

### CROWN BACKER



#### SKU

#### STAIN

#### PAINT

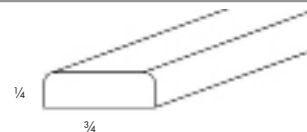
CROWNBACK-XL

104

104

- Thickness is ¾" - can be used as back member for crown or many other applications
- For taller appliances, use furniture base

### SCRIBE



#### SKU

#### STAIN

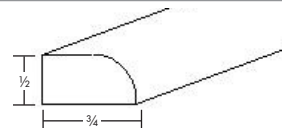
#### PAINT

SCRIBE

57

57

### SHOE



#### SKU

#### STAIN

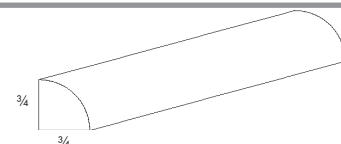
#### PAINT

SHOE

85

85

### QUARTER ROUND



#### SKU

#### STAIN

#### PAINT

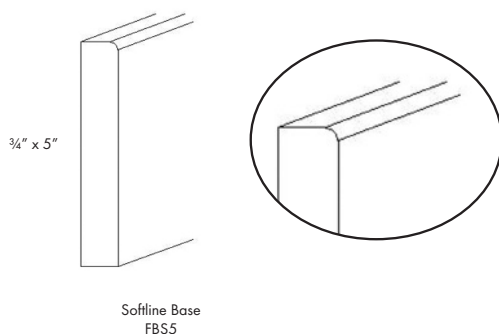
QROUND

85

85

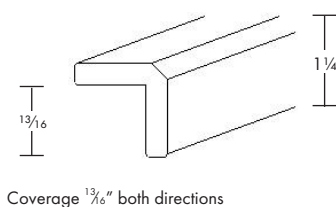
# TRIM & ACCESSORIES

## FURNITURE BASE



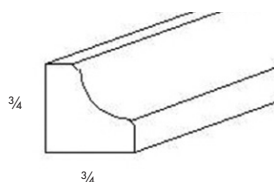
SKU	STAIN	PAINT
FBS5	364	364

## OUTSIDE CORNER



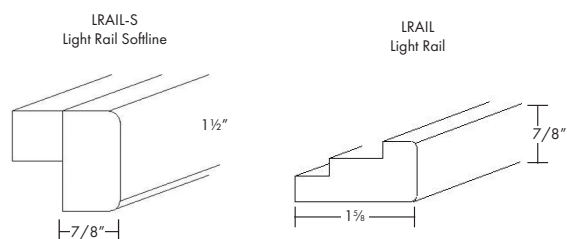
SKU	STAIN	PAINT
OCM	143	143

## INSIDE CORNER



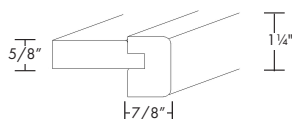
SKU	STAIN	PAINT
ICM	102	102

## LIGHT RAIL



SKU	STAIN	PAINT
LRAIL-S	225	225
LRAIL	210	210

## STACKER RAIL

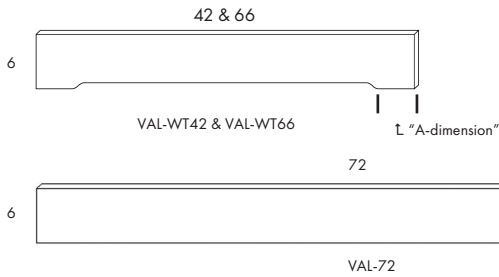


SKU	STAIN	PAINT
STACKRAIL-S	225	225

- Use for seamlessly stacking cabinets
- Note glass door cabinet reveals differ from standard



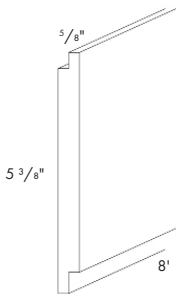
## VALANCE



SKU	STAIN	PAINT
VAL-WT42	167	167
VAL-WT66	215	215
VAL-72	167	167

Val-WT42 "A-Dimension" flat is 5 7/8"  
VAL-WT66 "A-Dimension" flat is 8 7/8"

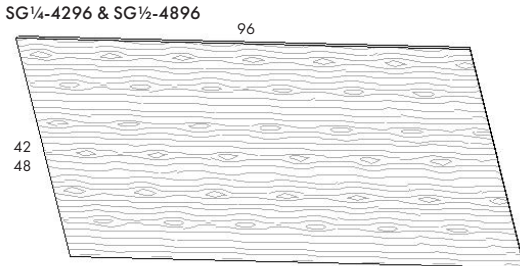
## SHIPLAP



SKU	STAIN	PAINT
SHIPLAP	347	347

- Groove is 3/8"

## SHEET STOCK



SKU	STAIN	PAINT
SG 1/4-4296	463	463
SG 1/2-4896-PBD	402	402

## TOESKINS & END SKINS (1/4" THICK MATERIAL)

	SKU	STAIN	PAINT
BASE SKIN - 34 1/2" x 23 1/4"	BASESKIN	94	94
WALL SKIN - 39" x 11 1/4"	WALL39SKIN	50	50
WALL SKIN - 54" x 11 1/4"	W5412SKIN	75	75
WALL SKIN - 54" x 14 1/4"	W5415SKIN	126	126
TALL SKIN - 93" x 23 1/4"	TALL93SKIN	240	240
TOESKIN - 8' x 4 1/2"	TOESKIN	82	82
ISLAND SKIN - 34 1/2" x 34 1/2"	ISL36SKIN	252	252

CORBEL

SKU

STAIN

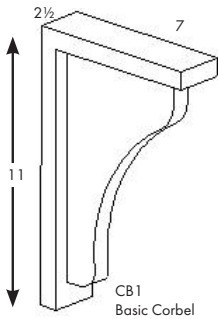
PAINT

CB1

142

142

- CB1 is 11" tall, 7" deep and 2½" wide



CB1  
Basic Corbel

LEG

SKU

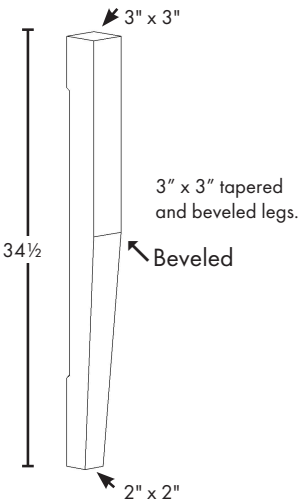
STAIN

PAINT

LEG2

436

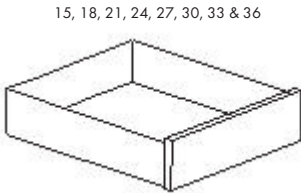
436



3" x 3" tapered  
and beveled legs.

Beveled

DOVETAIL SOLID WOOD ROLL OUT SHELVES



Roll outs are adjustable!

SKU

ROS15-DT	196 + mounting bracket
ROS18-DT	211 + mounting bracket
ROS21-DT	225 + mounting bracket
ROS24-DT	240 + mounting bracket
ROS27-DT	255 + mounting bracket
ROS30-DT	269 + mounting bracket
ROS33-DT	284 + mounting bracket
ROS36-DT	298 + mounting bracket

- **Mounting Bracket sold separately, see below**
- All ROS come with soft close, full-extension slides
- Standard ROS are for 24" deep cabinets

DOVETAIL ROLL OUT SHELF MOUNTING BRACKET

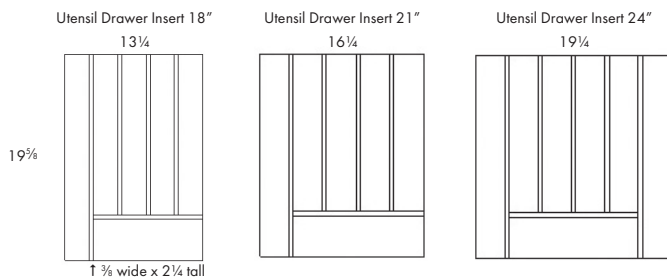
SKU

*ROSH-TALL-(DT)	213
**ROSH-BASE-(DT)	55

- Mounting bracket allows Roll Out Shelves to be adjustable
- \*Tall Mounting Bracket Kit (47<sup>7</sup>/<sub>8</sub>" Tall) Can mount up to 5 ROS
- \*\*Base Mounting Bracket Kit (12<sup>2</sup>/<sub>16</sub>" Tall) Can mount up to 2 ROS
- BFH uses Tall Mounting Bracket (ROSH-TALL-(DT)) that is cut down to fit.

ROLL OUT SHELVES

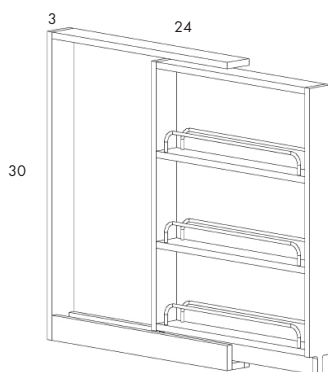
### UTENSIL DRAWER



SKU	STAIN	PAINT
DRAWDIV18	242	242
DRAWDIV21	259	259
DRAWDIV24	276	276

- 1/4" bottom, 3/8 x 2 1/4 hardwood dividers

### 3" BASE SPICE PULL-OUT ACCESSORY

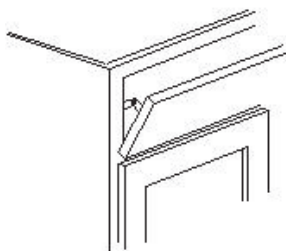


SKU	STAIN	PAINT
BSP03	837	837

- Uses stainless steel ball bearing slide - NOT Soft Close

1. NO finished SIDES are included
2. Must be installed between two cabinets
3. Set gap between 2 cabinets at 3 1/4"
4. Requires 3" filler as face, not included

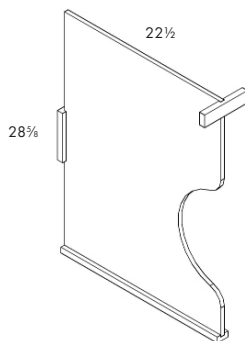
### TILTOUT SINK FRONT



SKU	STAIN	PAINT
TILTOUTSF	179	179

- Trimmable
- Kit includes tray, 2 end caps and hinges
- 24" wide. Designed to fit into 30", 33" and 36" wide cabinets.
- See Modifications on pg. 11 to have installed in cabinet.
- **CAUTION:** Most sinks do not allow the use of Tiltouts

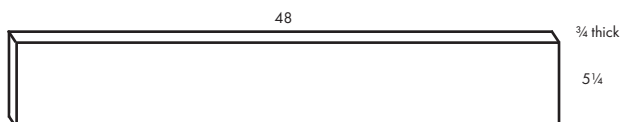
### TRAY DIVIDER



SKU	STAIN	PAINT
TRAYDIV	162	162

- Fits in Base Full Height only. Not able to be installed in Standard Base cabinets.

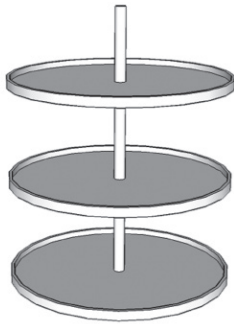
### PLYWOOD CLEAT PACK



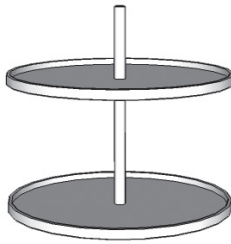
SKU	STAIN	PAINT
CLEATPACK	45	45

- 2 pcs per pack - unfinished
- \*5 1/4 is same height as toe board - can use to support diagonal sink floor, countertop support etc.

**WALL CABINET LAZY SUSAN KITS WOOD OR POLYMER TRAYS**



3-Shelf Lazy Susan Kit fits in 39" high

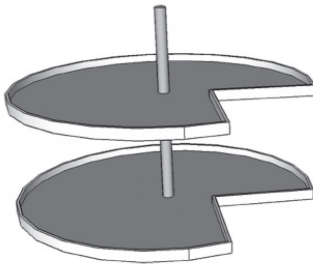


2-Shelf Lazy Susan Kit fits in 30" high

SKU	PRICE
KIT-WLS-3S-PT	466
KIT-WLS-2S-PT	245
KIT-WLS-3S-WD	707
KIT-WLS-2S-WD	471

- PT = Polymer Tray
- WD = Wood Tray

**BASE LAZY SUSAN KIT (28" DIAMETER)**



SKU	PRICE
BLS28POLYSHELFS	403
BLS28WDSHELFS	548

- Fits in BER36
- BLS28POLYSHELFS has white polymer trays
- BLS28WDSHELFS has wood trays (wood trays mount on an adjustable shelf - not a pole and must be installed as cabinet is built - will not fit in cabinet after assembly.)

**WASTE BASKET KIT**



SKU	PRICE
KIT-BWB15	680
KIT-BWBD18/21	786

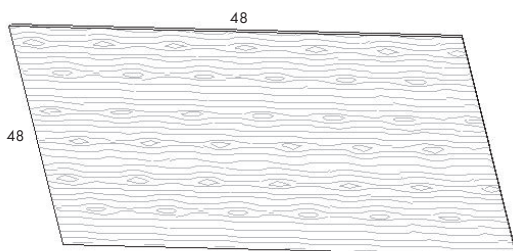
- Single Garbage Can Holder fits in B15 & VB15
- Double Garbage Can Holder fits in B18 and B21
- Each garbage can has 35 quart capacity
- Garbage can included is grey

**LAUNDRY HAMPER KIT**



SKU	PRICE
KIT-BLH18	786

- Kit fits in B18



SKU	PRICE
SG1/4-4848	230

- Comes as a Natural UV treated
- Matches natural interior of cabinet

## TRIM & ACCESSORIES

### LAUNDRY HAMPER & WASTE BASKET



LAHAMPER  
Laundry Hamper



WBASKET  
Waste basket  
35 Qt. Capacity

#### SKU

#### PRICE

LAHAMPER

153

WBASKET

66

### BUMPERS

#### SKU

#### PRICE

20 PACK OF BUMPERS (NOT SHOWN)

BUMPER20

8

100 PACK OF BUMPERS (NOT SHOWN)

BUMPER100

24

### SHELF CLIPS & PINS

#### SKU

#### PRICE

PACKAGE OF 8 SHELF CLIPS

SHELFCLIP8

4

PACKAGE OF 50 SHELF CLIPS

SHELFCLIP50

12

PACKAGE OF 8 METAL SHELF PINS

MTSHELFCLIP8

21

### TOUCH UP KITS

#### SKU

#### PRICE

TOUCH-UP KIT - WHITE

TUK-WHM

106

TOUCH-UP KIT - SMOKED CASHEW

TUK-CS

To order a carton of TUKs, Add "-CT" to TUK part number. IE: TUK-WHM-CT

1265

### PAINT & STAIN

#### SKU

#### STAIN

#### PAINT

PINT OF STAIN OR PAINT

PINTSP

215

215

12 OZ. SPRAY CANS OF PAINT AVAILABLE IN ALL COLORS

PAINT12-OZ

196

196

BLENDER

BLENDER

60

60

CLEAR COAT

CLEARCOAT

60

- Painted material is for use in factory environment and must be sprayed with professional equipment ONLY.
- Glaze for ivory only available in touch up pens

**ADJUSTABLE SHELF KITS**

	SKU	PRICE
28 ¼ X 10½	ASK3012	157
34¼ X 10½	ASK3612	191
10¼ X 22¼	ASK1224	147
13¼ X 22¼	ASK1524	164
16¼ X 22¼	ASK1824	181
19¼ X 22¼	ASK2124	198
22¼ X 22¼	ASK2424	215
28¼ X 22¼	ASK3024	249
34¼ X 22¼	ASK3624	303

**ADJUSTABLE SHELF KITS - STAINED/PAINTED**

SKU	PRICE
WFIMSK-12	164
WFIMSK-12-15D	196
WFIMSK-15	164
WFIMSK-15-15D	196
WFIMSK-18	198
WFIMSK-18-15D	237
WFIMSK-24	221
WFIMSK-24-15D	266
WFIMSK-30	245
WFIMSK-30-15D	295
WFIMSK-36	300
WFIMSK-36-15D	359
WFIMDIASK-24*	422
WFIMDIASK-27-15D*	504

\* Available in wall colors only

**BLS36 REPLACEMENT SHELF AND TRAY**

SKU	PRICE
BLS36-REPSHELF	808



## TRIM & ACCESSORIES

### BELLA SOFT CLOSE HINGE ½" OVERLAY

SKU	PRICE
Bella Standard hinge - ½" overlay	HINGESC-12MM 14

### STANDARD HINGE 1 ¼" OVERLAY SOFT CLOSE

SKU	PRICE
Soft Close hinge - 1 ¼" overlay	HINGESC-32MM 14

### DTC HINGE RESTRICTOR

#### Technical Details:

- Restrictor clip limits opening angle of door to 86 degrees.
- These Restrictor Clip Hinges limit the opening angle of the door from 107 degrees to 86 degrees. Ideal for corner cabinets, adjacent cabinets whose doors open against one another, or any other cabinet where obstacles near the door or the door itself would be damaged by opening.
- 2 per 30" and below
- 3 per 39" and above



SKU	PRICE
HINGESC-DTC86R	16
DTC86CLIP*	2
*Clip Only*	

### SOFT CLOSE HINGE INSERT (TO EXISTING NON-SOFT CLOSE BELLA HINGES)

SKU	PRICE
Soft close insert for ½" Overlay Hinge	SC-INSRT-1232MM 6
Requires 2 -3 hinges per door, based on height	

### BER/BLS STILE HINGE BELLA (165°)

SKU	PRICE
HINGE165-12MM	18
Requires 2 -3 hinges per door, based on height	

### BER/BLS STILE HINGE (165°)

SKU	PRICE
HINGE165-16MM	18
Requires 2 -3 hinges per door, based on height	

### BER/BLS CENTER HINGE (135°)

SKU	PRICE
HINGE135-CH	18

### STANDARD DRAWER SLIDE - FULL EXTENSION SOFT CLOSE

SKU	PRICE
24" standard drawer (used in 27" deep cabinet) slide - full extension soft close	SLD-24-FEXT 75
21" standard drawer (used in 24" deep cabinet) slide - full extension soft close	SLD-21-FEXT 75
18" standard drawer (used in 21" deep cabinet) slide - full extension soft close	SLD-18-FEXT 75
15" standard drawer (used in 18" deep cabinet) slide - full extension soft close	SLD-15-FEXT 75
12" standard drawer (used in 12" deep cabinet) slide - full extension soft close	SLD-12-FEXT 75

- Slides come in pairs. Boots included

### BLUM DRAWER SLIDE - FULL EXTENSION SOFT CLOSE

SKU	PRICE
(533 mm/20 63/64" slide) used in 24" deep cabinet	SLD-24BLM-FEXT 100
(457 mm/17 63/64" slide) used in 21" deep cabinet	SLD-21BLM-FEXT 100
(381 mm/15" slide) used in 18" deep cabinet	SLD-18BLM-FEXT 100
(305 mm/12 1/4" slide) used in 15" deep cabinet	SLD-15BLM-FEXT 100
(229 mm/9 1/4" slide) used in 12" deep cabinet	SLD-12BLM-FEXT 100

- Slides come in pairs. Boots included



**BULK PACK PULLS & KNOBS WITH SCREWS**



**BPULL-BRNICK-10PC**

Brushed Nickel  
8-32 thread  
Screw centers 96 mm (3¾")  
Overall length 150 mm (5⅞")

	SKU	PRICE
10 PACK BRUSHED NICKEL BAR PULL	BPUL-BRNCK-10PK	60
1 BRUSHED NICKEL BAR PULL	BPUL-BRNCK-1PC	7

- Installation of hardware on assembled cabinet not included
- Hardware 10 packs include 1¾ Break Off Screws

**ADDITIONAL/EXTRA PACKS OF SCREWS**

	SKU	PRICE
20 DOOR SCREWS 1¼"	SCRDOOR1-1/4	4
20 DRAWER SCREWS 1¾"	SCRDRAW1-3/4	5
20 BREAK OFF SCREWS 1¾"	SCRBRKOFF1-3/4	7

## GREEN FOREST CABINETRY

## 5 YEAR LIMITED WARRANTY

**COVERAGE OF WARRANTY**

The subject of this warranty covers cabinets only. Hardware, installed or otherwise, is not covered under this warranty. This warranty is subject to all limitations, exclusions, disclaimers and procedures set forth herein. All cabinets purchased from **Green Forest** are warranted to the original purchasing consumer for 5 years from the date of the original purchase or as long as the original purchasing consumer owns the home, whichever is less, against unnatural defects in material and workmanship under normal residential use. Any use of **Green Forest** products other than for residential use are not covered under this warranty. This warranty is non transferable and does not cover cabinets sold or shipped outside of the United States. Should **Green Forest** cabinets fail during the applicable warranty period due to defects in the material or workmanship under normal use, **Green Forest**, in its discretion, will repair or provide the parts necessary to replace the defective products.

**EXCLUSIONS**

This warranty supersedes any and all previous warranties by **Green Forest** and constitutes the exclusive remedy against **Green Forest** Cabinetry for all defects, damages and workmanship. There are no implied warranties extending beyond the terms of this warranty. **Green Forest** shall not be liable for any incidental or consequential costs, expenses or damages. This warranty gives you specific legal rights, and you may also have other rights, which vary from state to state. It is possible that one or more of the limitations and exclusions in this warranty may not apply to you. This warranty does not cover the cost of installation, removal, subsequent damage or transportation of the defective product, regardless of whether the work was performed by a contractor, service company or the consumer.

**LIMITATIONS**

This warranty does not cover

- Any issue that is associated with or the result of cabinets not assembled by **Green Forest**
- Hairline cracks in painted face frame joints.
- Problems caused by unauthorized services, improper installation of cabinets, cabinetwork, drawer slides or hinges.
- SKUs that have been modified from its original form.
- Any products used or uninstalled in connection with cabinets, such as gas or electric appliances, counter tops, or plumbing fixtures.
- Damage caused by transportation, storage, dirt, exposure to moisture or excessive heat or cold, nor does it cover defects arising from regular wear and tear, misuse, neglect, accidents, alterations, improper use or failure to maintain properly.

No installer, retailer, distributor, agent or employee of **Green Forest** has the authority to alter the obligations or limitations in this warranty.

**DISCLAIMERS**

The following is a brief recap of some of the characteristics of the wood and finishes on the cabinets you are about to purchase. Please read them carefully. If some of these characteristics concern you, please choose something else. We bring these characteristics to your attention so you will realize that **Green Forest** will not be

held responsible for these variations in your cabinetry.

**WOOD AND COLOR VARIATIONS:** Wood is a product of nature, and since no two trees are alike, cabinets may vary in color, texture and grain. Naturally occurring wood characteristics such as variations in color, grain, mineral streaks, pinholes, and knots are not considered defects. Color variations in cabinets are also a natural occurrence due to species, age, character of cabinets, and exposure to UV light and sunlight. For these reasons, new and/or replacement cabinets may not match display samples and/or existing cabinets. This may result in overall color variations, but is not considered a defect.

**GLAZED FINISHES:** A glazed finish by character is an uneven finish. Some edges and profiles will have heavier hang up than others and glazing may vary cabinet to cabinet, door to drawer and SKU to SKU. This may result in overall color variations but is not considered a defect.

**PAINTED FINISHES:** Wood by nature will undergo expansion and contraction movements year after year as it compensates and adjusts to ever changing atmospheric humidity and temperature conditions. As such, finish stress lines may become visible on painted cabinets especially at the joints. Any such occurrence is not considered a defect and are not covered by this warranty.

**WARRANTY PERFORMANCE**

If a defect does occur within the terms and conditions of this warranty, such defective part will be repaired by **Green Forest** at its sole discretion. **Green Forest** will not provide or pay for the cost of removal of defective product, transportation of defective, repaired or replaced product or installation of repaired or replaced product. **Green Forest** will not be responsible for any shipping damages to the defective, replaced or repaired product. If defective SKU has been discontinued or is not available at the time, **Green Forest** reserves the right to replace the SKU with the most similar SKU available at that time. **Green Forest** may require, at its discretion, that the customer submit a clear photo, or that the company representative view the SKU being claimed before honoring this warranty.

**THIS WARRANTY IS THE EXCLUSIVE WARRANTY OF GREEN FOREST AND IS IN LIEU OF AND GREEN FOREST DISCLAIMS ALL OTHER WARRANTIES, EXPRESS OR IMPLIED, INCLUDING THE IMPLIED WARRANTIES OF MERCHANTABILITY AND FITNESS FOR A PARTICULAR PURPOSE.**

**CLAIMS**

To submit a claim covered under this warranty, the original proof of purchase or a copy must be provided. Please e-mail all documents to [ordering@greenforestcabinetry.com](mailto:ordering@greenforestcabinetry.com)

**RETURNED MATERIALS & RETURN MATERIAL AUTHORIZATION**

Please do not send back any SKUs to **Green Forest** prior to receiving proper authorization from customer service.

**Green Forest** takes no responsibility on any SKUs sent back to **Green Forest** without proper return authorization.



Simply Quality, Simply on Trend and Simply Affordable.

At Green Forest Cabinetry, we keep things simple. Our values, standards and decades of manufacturing experience, as well as how “uncorporate” we are, have led to our cabinets being the best value in the market.

Quality and value that you would be proud to have in your own home.

When you buy Green Forest Cabinetry, you’re investing in higher quality at lower prices and better margins for your own business.

Don’t over-complicate it – remember, simple *is* affordable.

**[www.greenforestcabinetry.com](http://www.greenforestcabinetry.com)**

All photos are representative of actual Green Forest cabinetry. Please review an actual product sample with your dealer before making your final design decisions.

